

NORFOLK, VIRGINIA

ILS or LOC RWY 10

LOC I-NGU 108.95	APCH CRS 101°	Rwy Idg TDZE Arpt Elev 8071 14 15
----------------------------	-------------------------	---

[USN]

NORFOLK NS (CHAMBERS FLD) (KNGU)

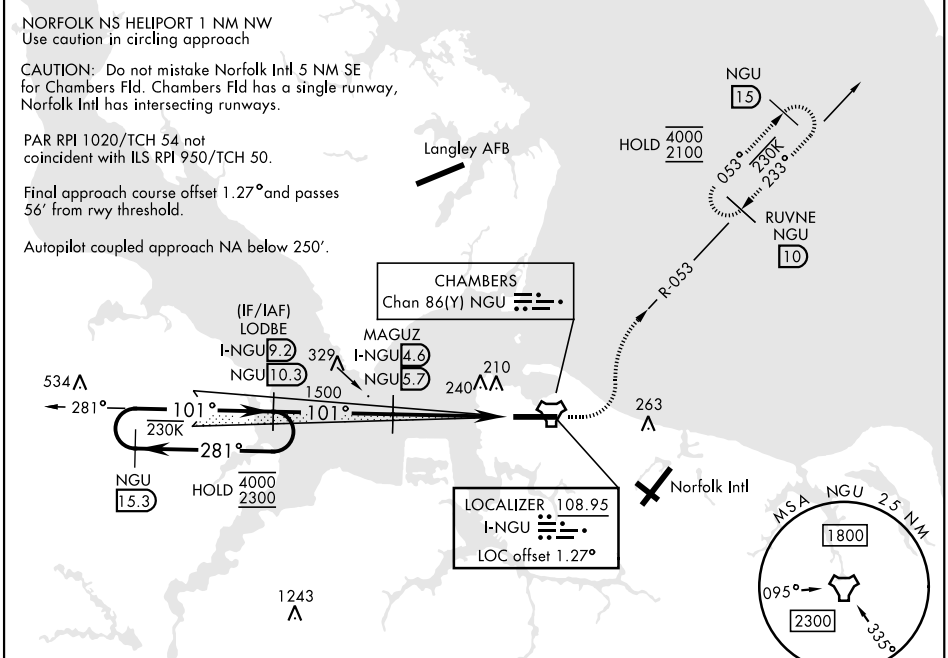
DME, TACAN required.

▼ * When ALS inop, increase vis to ¾ mile.
 ** When ALS inop, increase CAT AB vis to 1 mile, CAT CDE vis to 1¾ miles.
 *** Circling not authorized S of Rwy 10-28.



MISSED APPROACH: Climb to 500, then climbing left turn to 2100, intercept NGU TACAN R-053 to RUVNE/10 DME and hold.

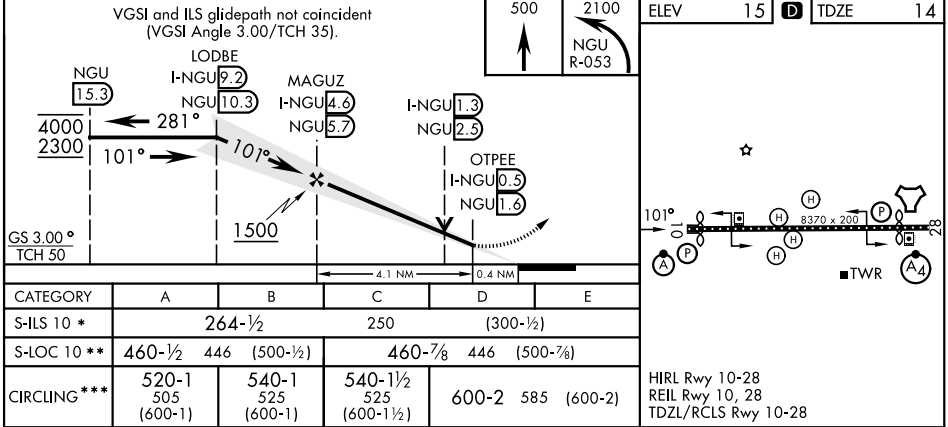
ATIS 118.425 338.225	APP CON 118.9 273.475	CHAMBERS TOWER 124.3 379.15	GND CON 121.8 370.85	ASR/PAR
--------------------------------	---------------------------------	---------------------------------------	--------------------------------	---------



NE-3, 16 APR 2026 to 14 MAY 2026

NE-3, 16 APR 2026 to 14 MAY 2026

EMERG SAFE ALT 100 NM 6100



NORFOLK, VIRGINIA 36°56'N-76°17'W NORFOLK NS (CHAMBERS FLD) (KNGU)

Amdt 3 22JAN26

ILS or LOC RWY 10