

RNAV (GPS) RWY 10

WAAS Chan 44826 W10A	APCH CRS 100°	Rwy Idg TDZE Arpt Elev	8071 14 15
------------------------------------------	-------------------------	------------------------------	---------------------------------------

[USN]

NORFOLK NS (CHAMBERS FLD) (KNGU)

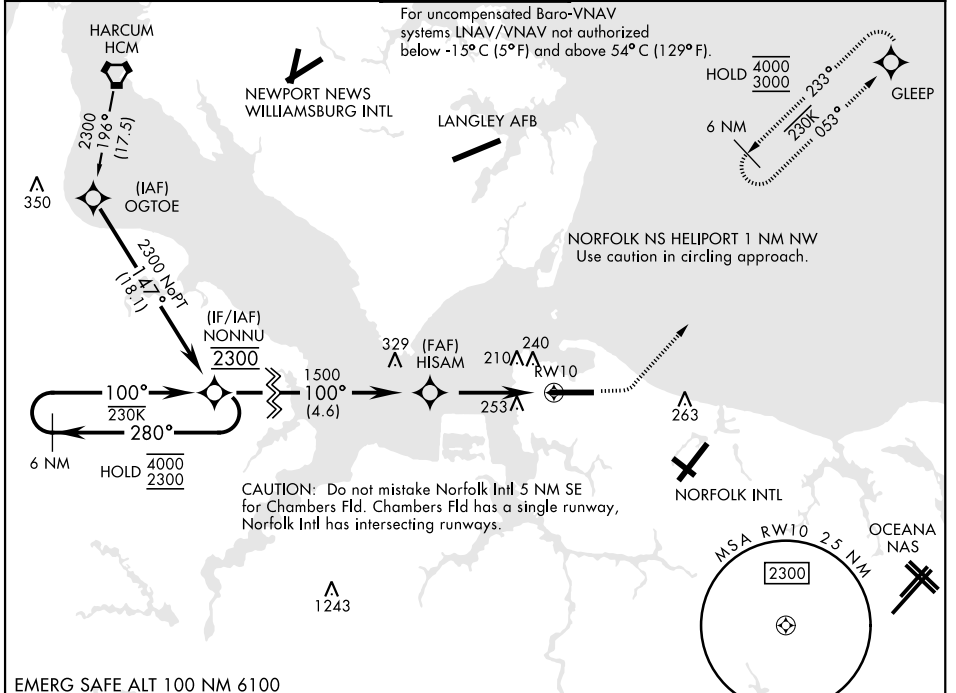
RNP APCH - GPS

- ▼ *When ALS inop, increase vis to ¾ mile.
- **When ALS inop, increase vis to 1¾ miles.
- ***When ALS inop, increase CAT AB vis to 1 mile, CAT CDE vis to 1¾ miles.
- ****Circling not authorized S of Rwy 10-28.



MISSED APPROACH: Climb to 800 then climbing left turn to 3000 direct GLEEP and hold.

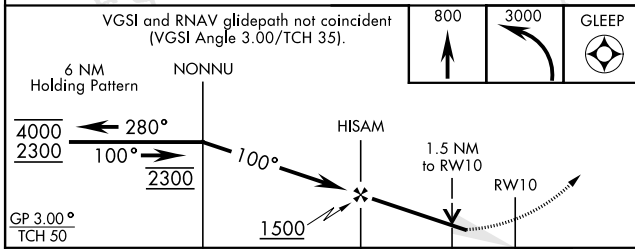
ATIS 118.425 338.225	APP CON 118.9 273.475	CHAMBERS TOWER 124.3 379.15	GND CON 121.8 370.85	ASR/PAR
--------------------------------	---------------------------------	---------------------------------------	--------------------------------	---------



NE-3, 16 APR 2026 to 14 MAY 2026

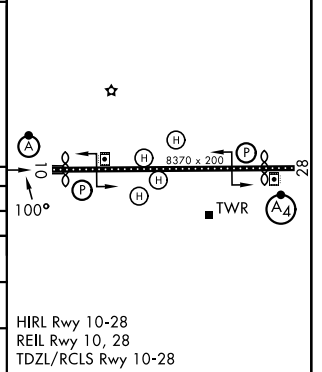
NE-3, 16 APR 2026 to 14 MAY 2026

EMERG SAFE ALT 100 NM 6100



ELEV	15	TDZE	14
------	----	------	----

CATEGORY	A	B	C	D	E
LPV DA *	214-½		200	(200-½)	
LNAV/VNAV DA **	520-1		506	(600-1)	
LNAV MDA ***	520-½ 506 (600-½)		520-1	506	(600-1)
CIRCLING ****	520-1 505 (600-1)	540-1 525 (600-1)	540-½ 525 (600-½)	600-2	585 (600-2)



RNAV (GPS) RWY 10