

NORFOLK, VIRGINIA

RNAV (GPS) RWY 28

APCH CRS	Rwy Idg	7375
280°	TDZE	14
	Arprt Elev	15

[USN]

NORFOLK NS (CHAMBERS FLD) (KNGU)

RNP APCH - GFS



MISSED APPROACH: Climb to 3000 direct NONNU and hold, continue climb in hold to 3000.

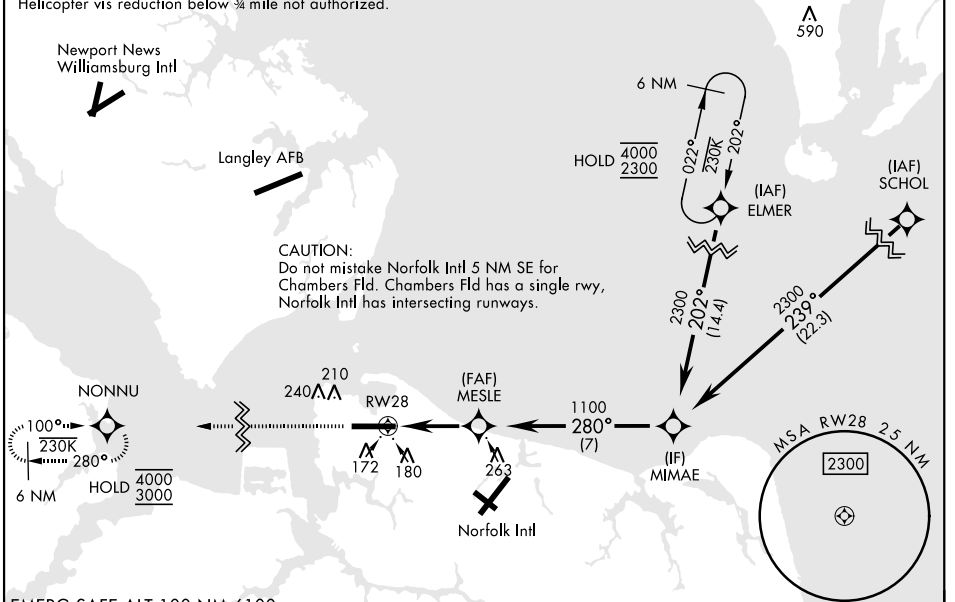
▼ *When ALS inop, increase vis to 3/8 mile.
 **When ALS inop, increase CAT AB vis to 1 mile; CAT CDE vis to 1 1/4 miles.
 ***Circling not authorized S of Rwy 10-28.

ATIS	APP CON	TOWER	GND CON	ASR/PAR
118.425 338.225	118.9 273.475	124.3 379.15	121.8 370.85	

For uncompensated Baro-VNAV systems, LNAV/VNAV NA below -15°C (5°F) and above 54°C (129°F).

NORFOLK NS HELIPORT 1 NM SW
Use caution in circling approach.

Helicopter vis reduction below 3/4 mile not authorized.

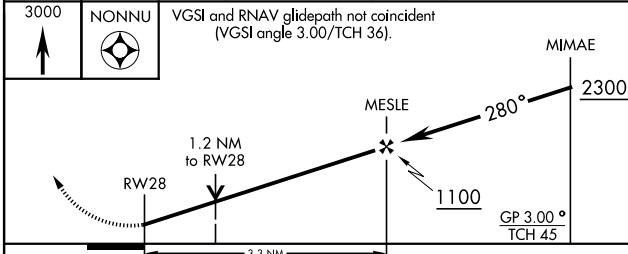


CAUTION: Do not mistake Norfolk Intl 5 NM SE for Chambers Fld. Chambers Fld has a single rwy, Norfolk Intl has intersecting runways.

NE-3, 16 APR 2026 to 14 MAY 2026

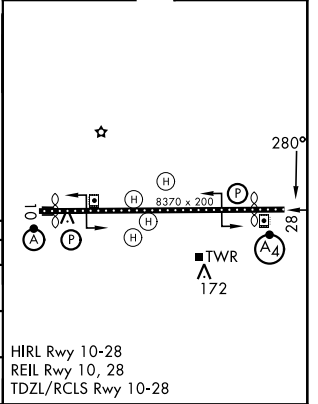
NE-3, 16 APR 2026 to 14 MAY 2026

EMERG SAFE ALT 100 NM 6100



ELEV	15	TDZE	14
------	----	------	----

CATEGORY	A	B	C	D	E
LNAV/VNAV DA*	303-3/4 289 (300-3/4)	314-3/4 300 (300-3/4)	322-3/4 308 (400-3/4)	333-3/4	319 (400-3/4)
LNAV MDA**	440-3/4 426 (500-3/4)		440-1	426	(500-1)
CIRCLING***	520-1 505 (600-1)	540-1 525 (600-1)	540-1 1/2 525 (600-1 1/2)	600-2	585 (600-2)



NORFOLK, VIRGINIA
Amdt 7 22JAN26

36° 56' N 76° 17' W

NORFOLK NS (CHAMBERS FLD) (KNGU)

RNAV (GPS) RWY 28