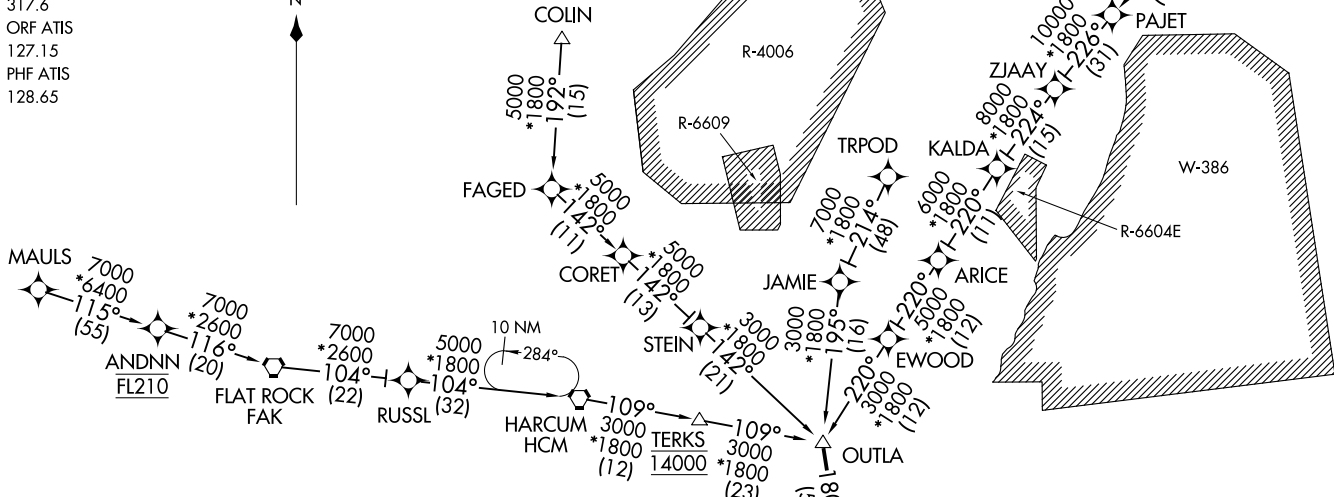


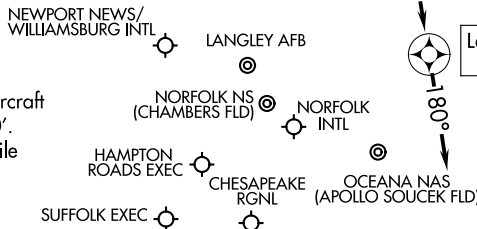
RNAV 1 - DME/DME/IRU or GPS.  
RADAR required.

OUTLA ONE ARRIVAL (RNAV)  
(OUTLA, OUTLA1) 22AN426

NORFOLK APP CON  
118.9 353.7  
LFI ATIS  
270.1  
KNGU ATIS  
118.425 338.225  
KNTU ATIS\*  
317.6  
ORF ATIS  
127.15  
PHF ATIS  
128.65



- NOTE: FAK Transition, ATC assigned only.
- NOTE: JAMIE Transition, ATC assigned only.
- NOTE: HCM Transition, ATC assigned only.
- NOTE: EWOOD Transition, ATC assigned only.
- NOTE: MAULS Transition only authorized for aircraft capable of operating at or above 14000'.
- NOTE: PHF and LFI arrivals only authorized to file TBOON and TRPOD Transitions.



(CONTINUED ON FOLLOWING PAGE)

NOTE: Chart not to scale.

NORFOLK, VIRGINIA

NORFOLK, VIRGINIA

OUTLA, OUTLA1) 26078  
OUTLA ONE ARRIVAL (RNAV)

AL-291 (FAA)

ARRIVAL ROUTE DESCRIPTION

COLIN TRANSITION (COLIN.OUTLA1)

EWOD TRANSITION (EWOD.OUTLA1)

FLAT ROCK TRANSITION (FAK.OUTLA1)

HARCUM TRANSITION (HCM.OUTLA1)

JAMIE TRANSITION (JAMIE.OUTLA1)

MAULS TRANSITION (MAULS.OUTLA1)

TBONN TRANSITION (TBONN.OUTLA1)

TRPOD TRANSITION (TRPOD.OUTLA1)

LANDING ALL AIRPORTS: From OUTLA on track 180° to MEEKA, then on track 180°. Expect RADAR vectors to final approach course.

NE-3, 16 APR 2026 to 14 MAY 2026

NE-3, 16 APR 2026 to 14 MAY 2026