

APP CRS	Rwy Ldg	7809
047°	TDZE	26
	Apt Elev	27

RNAV (RNP) Y RWY 5

NORFOLK INTL (O.R.F)

▼ For uncompensated Baro-VNAV systems, LNAV/VNAV NA below -9°C (16°F) or above 54°C (130°F). GPS required.



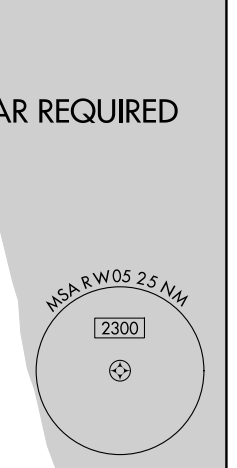
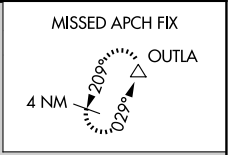
MISSED APPROACH: Climb to 2000 on track 047° to TECHI and on track 023° to OUTLA and hold.

ATIS
127.15

NORFOLK APP CON
118.9 353.7

NORFOLK TOWER
120.8 257.8

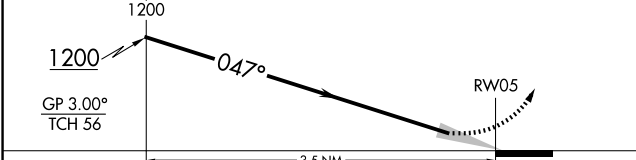
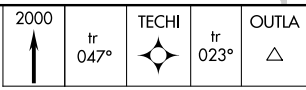
GND CON
121.9



NE-3, 16 APR 2026 to 14 MAY 2026

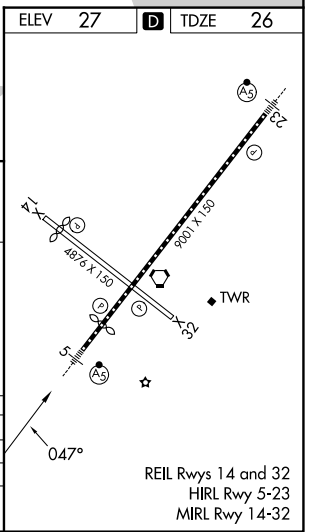
NE-3, 16 APR 2026 to 14 MAY 2026

See planview for multiple IF locations.



CATEGORY	A	B	C	D
RNP 0.10 DA		350/26	324 (400-½)	
RNP 0.30 DA		454/40	428 (500-¾)	

AUTHORIZATION REQUIRED



REIL Rwy 14 and 32
HIRL Rwy 5-23
MIRL Rwy 14-32