

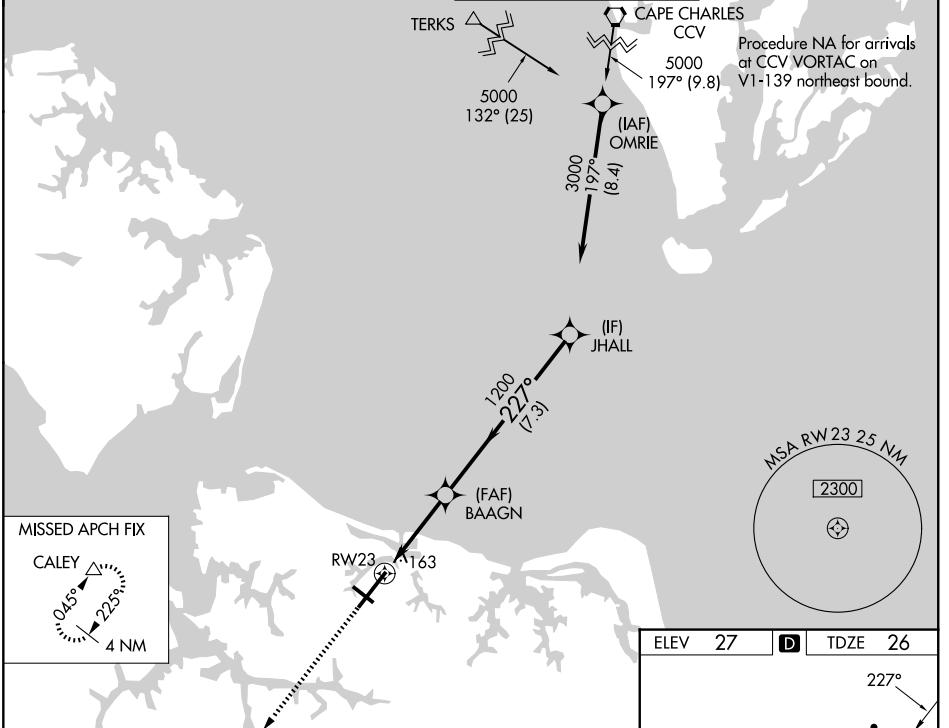
WAAS CH 56322 W23A	APP CRS 227°	Rwy Ldg TDZE Apt Elev	8995 26 27
--	------------------------	-----------------------------	---------------------------------------

RNAV (GPS) Z RWY 23

NORFOLK INTL (ORF)

<p>For uncompensated Baro-VNAV systems, LNAV/VNAV NA below -9°C (16°F) or above 54°C (130°F). DME/DME RNP-0.3 NA.</p>	MALSR 	MISSED APPROACH: Climb to 2000 direct CALEY and hold.

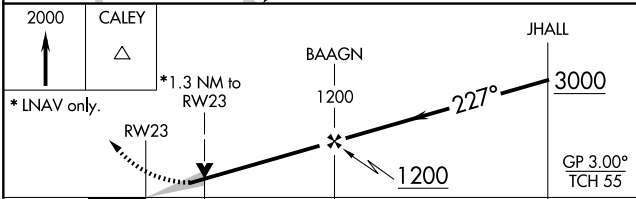
ATIS 127.15	NORFOLK APP CON 118.9 353.7	NORFOLK TOWER 120.8 257.8	GND CON 121.9
-----------------------	---------------------------------------	-------------------------------------	-------------------------



MISSED APCH FIX

CALEY

4 NM



CATEGORY	A	B	C	D
LPV DA		226- ¹ / ₂	200 (200- ¹ / ₂)	
LNAV/VNAV DA		403- ³ / ₄	377 (400- ³ / ₄)	
LNAV MDA	480- ¹ / ₂	454 (500- ¹ / ₂)	480- ⁷ / ₈	454 (500- ⁷ / ₈)
CIRCLING	480-1 453 (500-1)	540-1 513 (600-1)	540-1 ¹ / ₂ 513 (600-1 ¹ / ₂)	900-2 ³ / ₄ 873 (900-2 ³ / ₄)

ELEV 27	D	TDZE 26
---------	----------	---------

