

(SWOPE1.SWOPE) 25359

AL-291 (FAA)

NORFOLK INTL (ORF)
NORFOLK, VIRGINIA

SWOPE ONE DEPARTURE (RNAV)

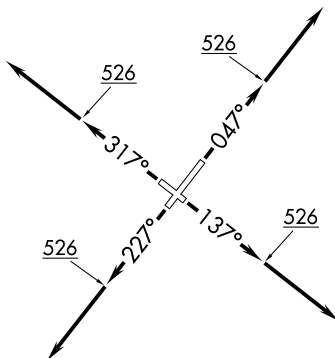
NORFOLK DEP CON
125.2 363.125
ATIS
127.15
CLNC DEL
118.5
GND CON
121.9
NORFOLK TOWER
120.8 257.8

RNAV1 DME/DME/IRU or GPS.

RADAR required.

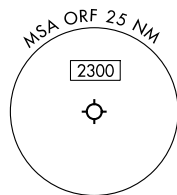
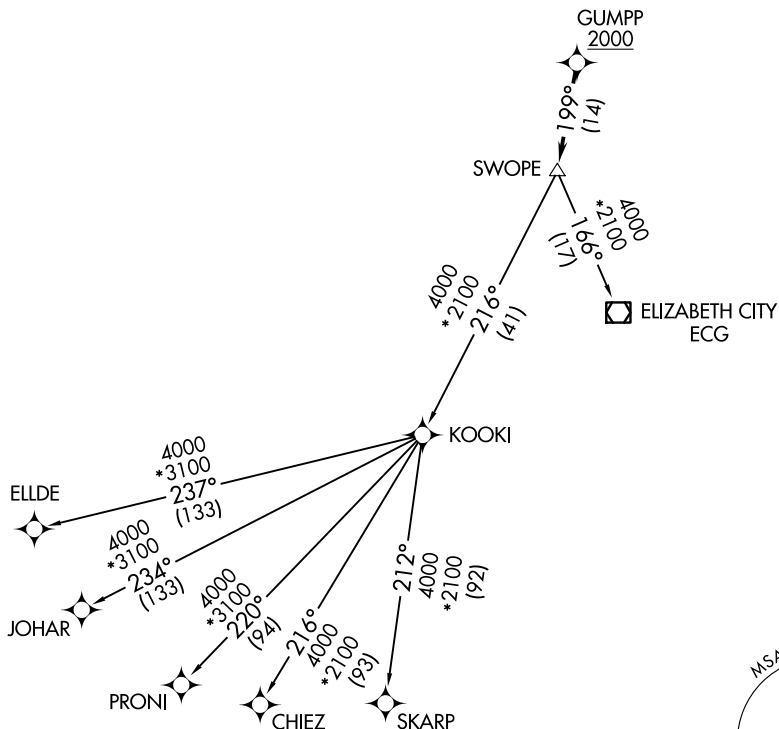
**TOP ALTITUDE:
4000**

TAKEOFF MINIMUMS:
Rwys 5, 14, 23, 32: Standard.



NE-3, 16 APR 2026 to 14 MAY 2026

NE-3, 16 APR 2026 to 14 MAY 2026



NOTE: Chart not to scale.

(CONTINUED ON FOLLOWING PAGE)

SWOPE ONE DEPARTURE (RNAV)

(SWOPE1.SWOPE) 02OCT25

NORFOLK, VIRGINIA
NORFOLK INTL (ORF)

SWOPE ONE DEPARTURE (RNAV)



DEPARTURE ROUTE DESCRIPTION

TAKEOFF RUNWAY 5: Climb on heading 047° to 526, then on heading 047° or as assigned by ATC, for RADAR vectors to cross GUMPP at or above 2000, thence....

TAKEOFF RUNWAY 14: Climb on heading 137° to 526, then on heading 137° or as assigned by ATC, for RADAR vectors to cross GUMPP at or above 2000, thence....

TAKEOFF RUNWAY 23: Climb on heading 227° to 526, then on heading 227° or as assigned by ATC, for RADAR vectors to cross GUMPP at or above 2000, thence....

TAKEOFF RUNWAY 32: Climb on heading 317° to 526, then on heading 317° or as assigned by ATC, for RADAR vectors to cross GUMPP at or above 2000, thence....

....on track 199° to SWOPE, then on assigned transition. Maintain 4000, expect filed altitude 10 minutes after departure.

CHIEZ TRANSITION (SWOPE1.CHIEZ)

ELIZABETH CITY TRANSITION (SWOPE1.ECG)

ELLDE TRANSITION (SWOPE1.ELLDE)

JOHAR TRANSITION (SWOPE1.JOHAR)

KOOKI TRANSITION (SWOPE1.KOOKI)

PRONI TRANSITION (SWOPE1.PRONI)

SKARP TRANSITION (SWOPE1.SKARP)

NE-3, 16 APR 2026 to 14 MAY 2026

NE-3, 16 APR 2026 to 14 MAY 2026