

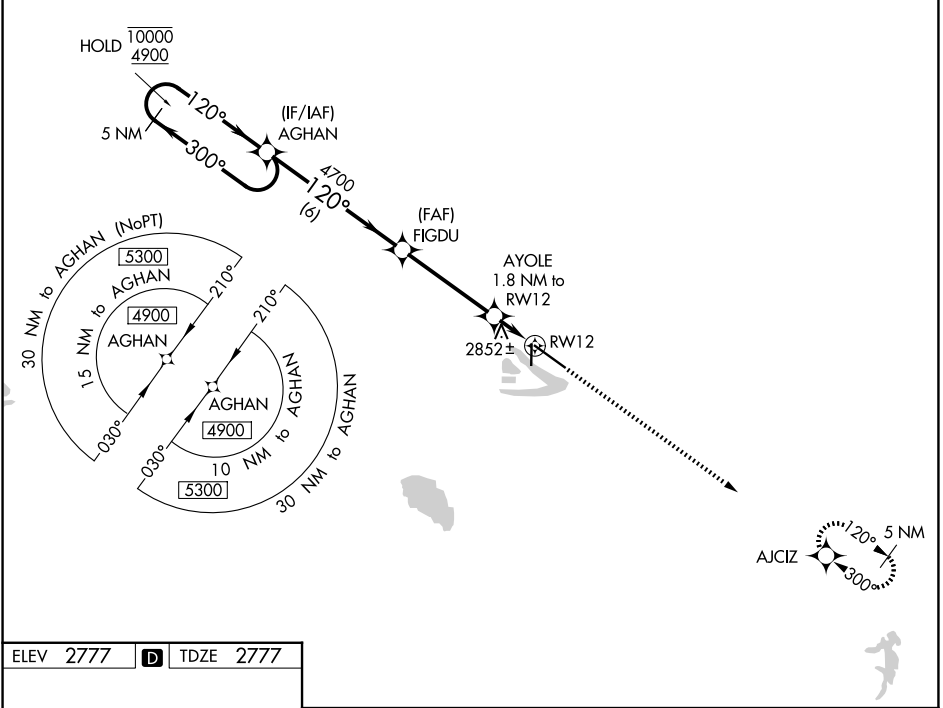
WAAS CH <b>50434</b> <b>W12A</b>	APP CRS <b>120°</b>	Rwy Ldg TDZE Apt Elev	<b>8001</b> <b>2777</b> <b>2777</b>
--	------------------------	-----------------------------	---

# RNAV (GPS) RWY 12

NORTH PLATTE RGNL/LEE BIRD FLD (LBF)

RNP APCH-GPS.	For uncompensated Baro-VNAV systems, LNAV/VNAV NA below -23°C or above 52°C.	MISSED APPROACH: Climb to 4700 direct AJCIZ and hold.
---------------	--	---

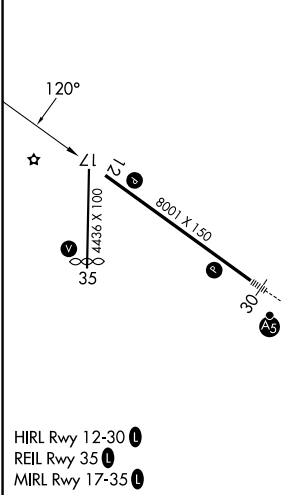
ASOS <b>118.425</b>	DENVER CENTER <b>132.7 226.675</b>	UNICOM <b>123.0 (CTAF) 0</b>
------------------------	---------------------------------------	---------------------------------



NC-2, 16 APR 2026 to 14 MAY 2026

NC-2, 16 APR 2026 to 14 MAY 2026

ELEV <b>2777</b>	<b>D</b>	TDZE <b>2777</b>
------------------	----------	------------------



	5 NM Holding Pattern	AGHAN	FIGDU	AYOLE 1.8 NM to RWY12	4700	AJCIZ
	10000 4900	300° 120°	120°	4700		
	GP 3.00° TCH 55			*0.9 NM to RWY12		
			*3400			
		6 NM	4.1 NM	0.9 NM	0.9 NM	
CATEGORY	A	B	C	D		
LPV DA	2977-3/4		200 (200-3/4)			
LNAV/VNAV DA	3027-3/4		250 (300-3/4)			
LNAV MDA	3120-1		343 (400-1)			
CIRCLING	3280-1 503 (600-1)	3340-1 563 (600-1)	3420-1 3/4 643 (700-1 3/4)	3560-2 1/2 783 (800-2 1/2)		