

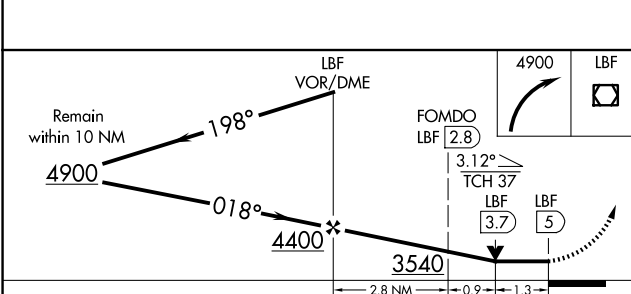
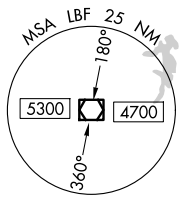
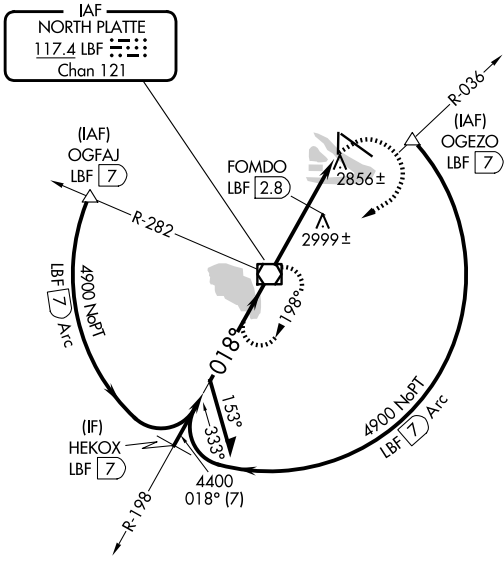
VOR/DME LBF 117.4 Chan 121	APP CRS 018°	Rwy Ldg 4135 TDZE 2777 Apt Elev 2777
--	------------------------	---

VOR RWY 35

NORTH PLATTE RGNL/LEE BIRD FLD (LBF)

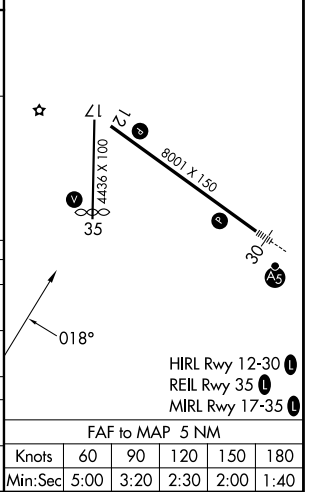
⚠ Rwy 35 helicopter visibility reduction below ¾ SM NA. **MISSED APPROACH:** Climbing right turn to 4900 direct LBF VOR/DME and hold, continue climb-in-hold to 4900.

ASOS 118.425	DENVER CENTER 132.7 226.675	UNICOM 123.0 (CTAF)
------------------------	---------------------------------------	-------------------------------



ELEV 2777 **D** TDZE 2777

CATEGORY	A	B	C	D
S-35	3540-1 763 (800-1)	3540-1¼ 763 (800-1¼)	3540-2¼ 763 (800-2¼)	3540-2½ 763 (800-2½)
CIRCLING	3540-1 763 (800-1)	3540-1¼ 763 (800-1¼)	3540-2¼ 763 (800-2¼)	3560-2½ 783 (800-2½)
FOMDO FIX MINIMUMS				
S-35	3220-1	443 (500-1)	3220-1¼ 443 (500-1¼)	3220-1½ 443 (500-1½)
CIRCLING	3280-1 503 (600-1)	3340-1 563 (600-1)	3420-1¾ 643 (700-1¾)	3560-2½ 783 (800-2½)



NC-2, 16 APR 2026 to 14 MAY 2026

NC-2, 16 APR 2026 to 14 MAY 2026