

LOC I-AAZ 111.9	APP CRS 116°	Rwy Ldg 10000
	TDZE 9	
	Apt Elev 9	

ILS RWY 12 (SA CAT I)

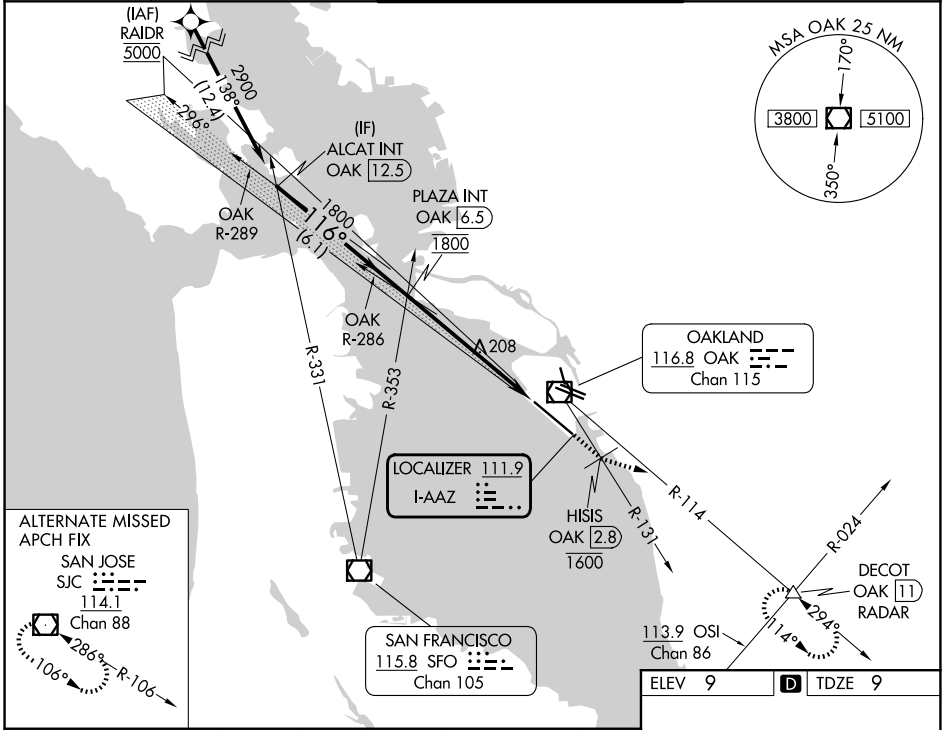
OAKLAND SAN FRANCISCO BAY (OAK)

DME required. From RAIDR: RNAV 1-GPS required.

MALSR MISSED APPROACH: Climb on heading 116° and on OAK VOR/DME R-131 to cross HISIS/OAK 2.8 DME at or below 1600 then climb to 5100 on heading 090° and on OAK VOR/DME R-114 to DECOT INT/OAK 11 DME/RADAR and hold, continue climb-in-hold to 5100.

⚠ Requires specific OPSPEC, MSPEC, or LOA approval and use of HUD to DH.

D-ATIS 133.775	NORCAL APP CON 125.35 263.15	OAKLAND TOWER 118.3 291.65 (10L/R-28L/R, 15-33) 127.2 256.9 (12-30)	GND CON 121.9 (10L/R-28L/R, 15-33) 121.75 (12-30)
--------------------------	--	---	---



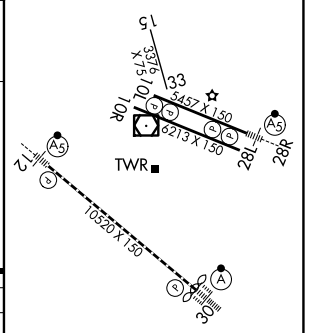
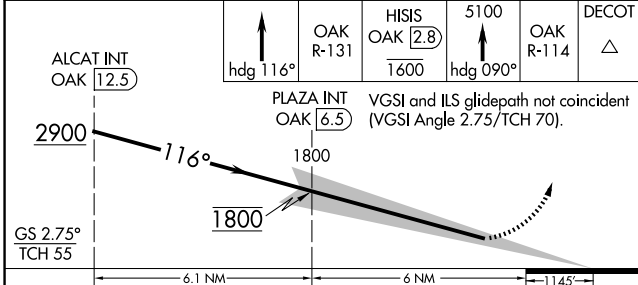
ALTERNATE MISSED APCH FIX
SAN JOSE
SJC
114.1
Chan 88
286° R-106
106°

OAKLAND
116.8 OAK
Chan 115

LOCALIZER 111.9
I-AAZ

SAN FRANCISCO
115.8 SFO
Chan 105

ELEV 9	D TDZE 9
--------	-----------------



CATEGORY	A	B	C	D
S-ILS 12	RA 153/14 150 DA 159			

SA CATEGORY I ILS - SPECIAL AIRCREW & AIRCRAFT CERTIFICATION REQUIRED

REIL Rwy 10R
TDZ/CL Rwy 30
MIRL Rwy 15-33
HIRL Rwy 12-30, 10L-28R, 10R-28L

SW-2, 16 APR 2026 to 14 MAY 2026

SW-2, 16 APR 2026 to 14 MAY 2026