

LOC/DME I-INB 108.7 Chan 24	APP CRS 296°	Rwy Ldg 10000 9 9
--	------------------------	----------------------------

ILS or LOC RWY 30

OAKLAND SAN FRANCISCO BAY (OAK)

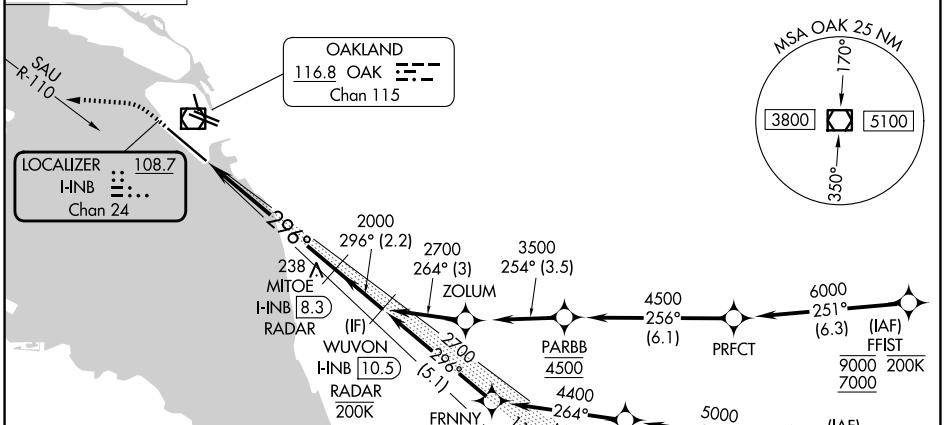
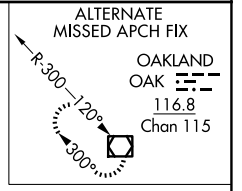
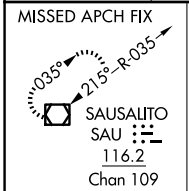
RNP APCH - GPS. From FFISt or MYSHN.
DME or RADAR required.
For inop ALS, increase S-LOC-30 Cat C and D visibility to 1 1/2 SM.

ALSIF-2
MISSED APPROACH: Climb to 600 then climbing left turn to 4000 on heading 260° and on SAU VOR/DME R-110 to SAU VOR/DME and hold, continue climb-in-hold to 4000.

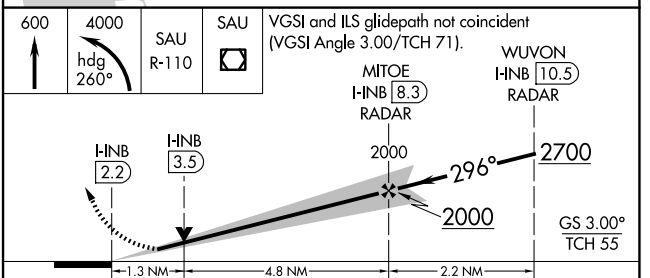
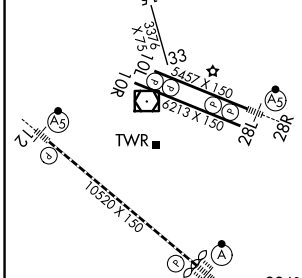
D-ATIS 133.775	NORCAL APP CON 125.35 263.15
--------------------------	--

OAKLAND TOWER	
118.3 291.65	(10L/R-28L/R, 15-33)
127.2 256.9	(12-30)

GND CON	
121.9	(10L/R-28L/R, 15-33)
121.75	(12-30)



ELEV 9	D	TDZE 9
--------	---	--------



REIL Rwy 10R
TDZ/CL Rwy 30
MIRL Rwy 15-33
HIRL Rwys 12-30, 10L-28R, 10R-28L
FAF to MAP 6.1 NM

Knots	60	90	120	150	180
Min:Sec	6:06	4:04	3:03	2:26	2:02

CATEGORY	A	B	C	D
S-ILS 30	209/18 200 (200-1/2)			
S-LOC 30	500/24	491 (500-1/2)	500/50	491 (500-1)
CIRCLING	560-1	551 (600-1)	660-1 3/4 651 (700-1 3/4)	1400-3 1391 (1400-3)

SW-2, 16 APR 2026 to 14 MAY 2026

SW-2, 16 APR 2026 to 14 MAY 2026