

APP CRS	Rwy Ldg 10000
116°	TDZE 9
	Apt Elev 9


RNAV (RNP) Z RWY 12

OAKLAND SAN FRANCISCO BAY (OAK)

RNP AR APCH.

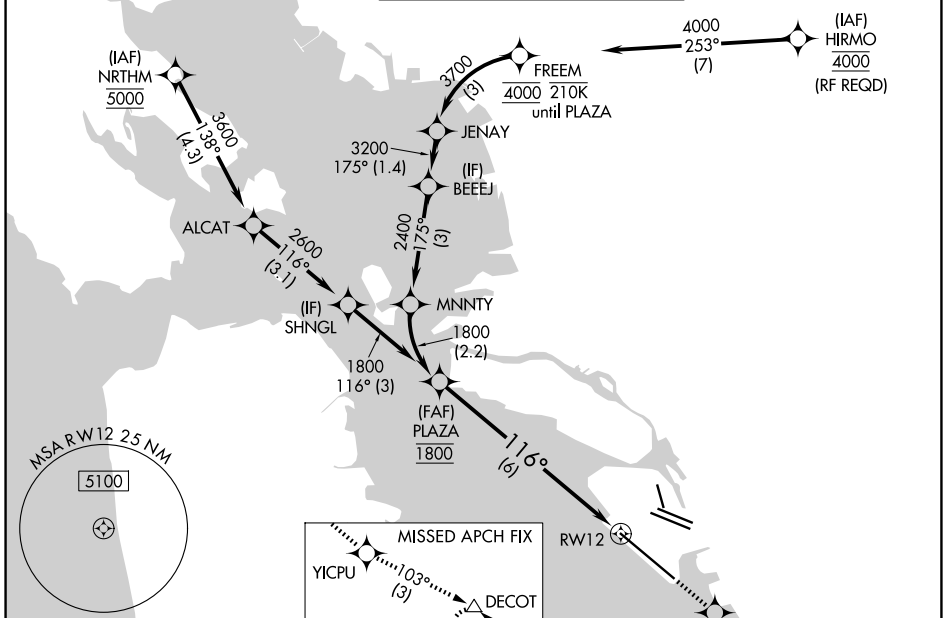
▼ For uncompensated Baro-VNAV systems, procedure NA below 0°C or above 54°C. For inop ALS increase RNP 0.15 visibility all Cats to RVR 4500, RNP 0.30 visibility all Cats to RVR 5500.

MALSR

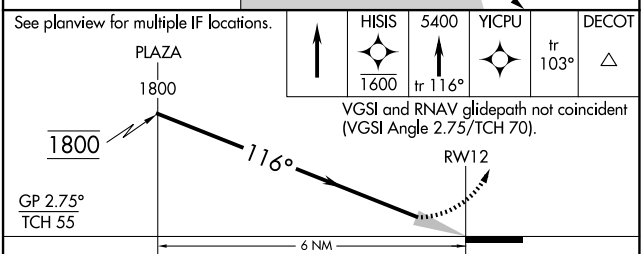
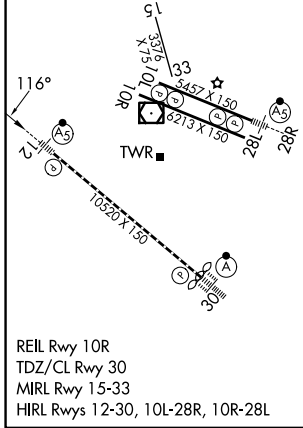


MISSED APPROACH: Climb direct HISIS to cross HISIS at or below 1600 then climb to 5400 on track 116° to YICPU and on track 103° to DECOT and hold, continue climb-in-hold to 5400.

D-ATIS 133.775	NORCAL APP CON 125.35 263.15	OAKLAND TOWER 118.3 291.65 (10L/R-28L/R, 15-33) 127.2 256.9 (12-30)	GND CON 121.9 (10L/R-28L/R, 15-33) 121.75 (12-30)
--------------------------	--	---	---



ELEV 9	D	TDZE 9
--------	----------	--------



CATEGORY	A	B	C	D
RNP 0.15 DA		289/24	280 (300-½)	
RNP 0.30 DA		386/35	377 (400-⅙)	

AUTHORIZATION REQUIRED

SW-2, 16 APR 2026 to 14 MAY 2026

SW-2, 16 APR 2026 to 14 MAY 2026