


WAAS CH 86418 W12A	APP CRS 116°	Rwy Ldg 10000 TDZE 9 Apt Elev 9
--	------------------------	--

RNAV (GPS) Y RWY 12

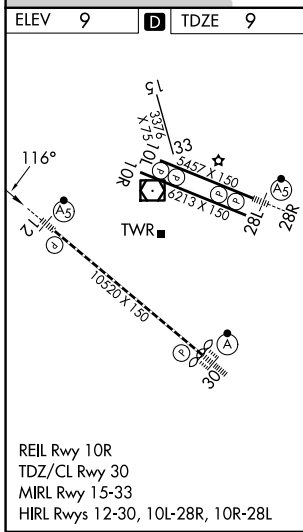
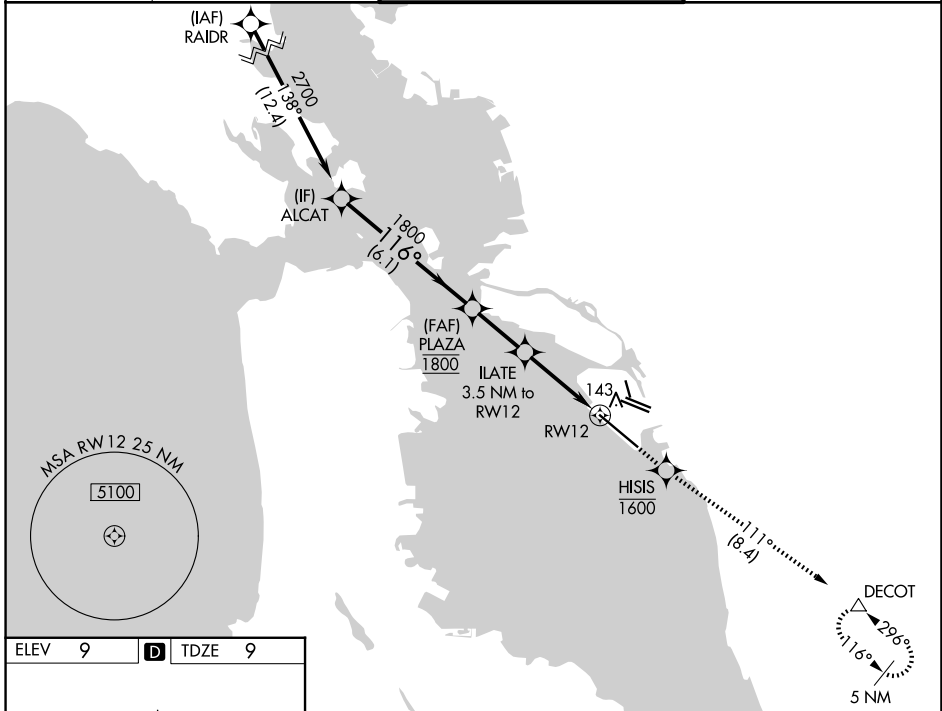
OAKLAND SAN FRANCISCO BAY (OAK)

▼ For uncompensated Baro-VNAV systems, LNAV/VNAV NA below 0°C (32°F) or above 54°C (130°F).
▲ DME/DME RNP-0.3 NA.
 #RVR 1800 authorized with use of FD or AP or HUD to DA.

MALSR


MISSED APPROACH: Climb direct HISIS to cross HISIS at or below 1600, then climb to 5400 on track 111° to DECOT and hold, continue climb-in-hold to 5400.

D-ATIS 133.775	NORCAL APP CON 125.35 263.15	OAKLAND TOWER 118.3 291.65 (10L/R-28L/R, 15-33) 127.2 256.9 (12-30)	GND CON 121.9 (10L/R-28L/R, 15-33) 121.75 (12-30)
--------------------------	--	---	---



VGSI and RNAV glidepath not coincident (VGSI Angle 2.75/TCH 70).

ALCAT	PLAZA	ILATE	RW12	DECOT
2700	1800	1600	5400	5400
GP 2.75°	TCH 55	tr 111°		
6.1 NM	2.5 NM	2.5 NM	1 NM	
CATEGORY	A	B	C	D
LPV DA#		209/24	200 (200-½)	
LNAV/VNAV DA		304/27	295 (300-⅝)	
LNAV MDA	360/24	351 (400-½)	360/30	351 (400-⅝)
CIRCLING	560-1	551 (600-1)	660-1¾ 651 (700-1¾)	1380-3 1371 (1400-3)