

WAAS CH 72700 W28A	APP CRS 278°	Rwy Ldg 6213 TDZE 9 Apt Elev 9
--	------------------------	---

RNAV (GPS) Y RWY 28L

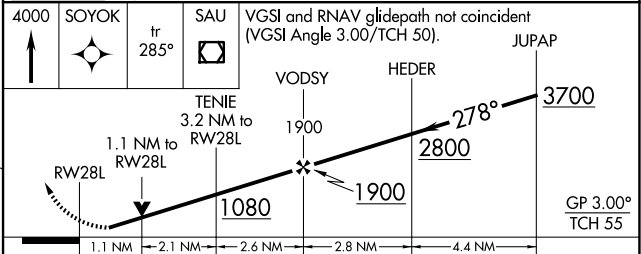
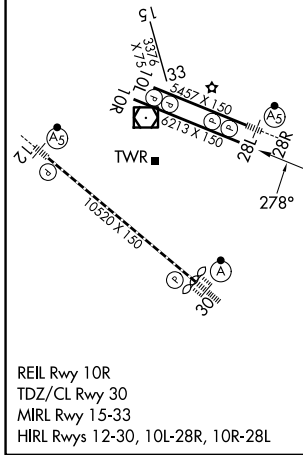
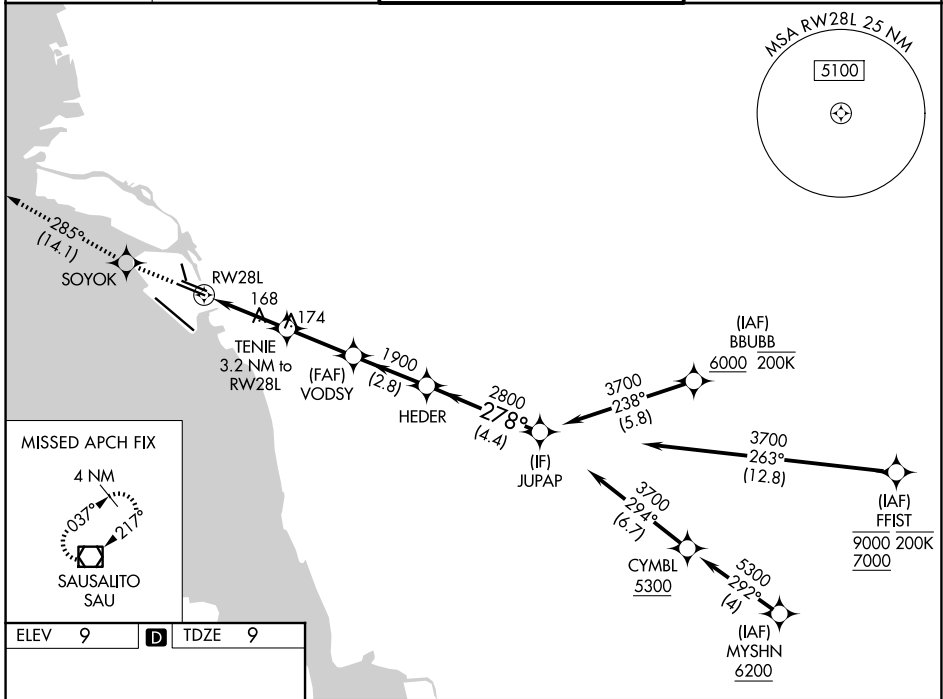
OAKLAND SAN FRANCISCO BAY (OAK)

RNP APCH - GPS.

▼ Rwy 28L helicopter visibility reduction below RVR 4000 NA.
▲ For uncompensated Baro-VNAV systems, LNAV/VNAV NA below 2°C or above 54°C.

MISSED APPROACH: Climb to 4000 direct SOYOK and on track 285° to SAU VOR/DME and hold, continue climb-in-hold to 4000.

D-ATIS 133.775	NORCAL APP CON 125.35 263.15	OAKLAND TOWER 118.3 291.65 (10L/R-28L/R, 15-33) 127.2 256.9 (12-30)	GND CON 121.9 (10L/R-28L/R, 15-33) 121.75 (12-30)
--------------------------	--	---	---



CATEGORY	A	B	C	D
LPV DA		259/40	250 (300-¾)	
LNAV/VNAV DA		387/55	378 (400-1)	
LNAV MDA	420/55	411 (500-1)	420/60	411 (500-1¼)
CIRCLING	560-1	551 (600-1)	660-1¾ 651 (700-1¾)	1400-3 1391 (1400-3)

SW-2, 16 APR 2026 to 14 MAY 2026

SW-2, 16 APR 2026 to 14 MAY 2026