

OKLAHOMA CITY, OKLAHOMA

# ILS or LOC/DME Z RWY 18

LOC I-FRJ <b>111.3</b>	APCH CRS <b>177°</b>	Rwy Idg <b>11,100</b> TDZE <b>1267</b> Arprt Elev <b>1291</b>
---------------------------	-------------------------	---

[USAF]

TINKER AFB (KTIK)

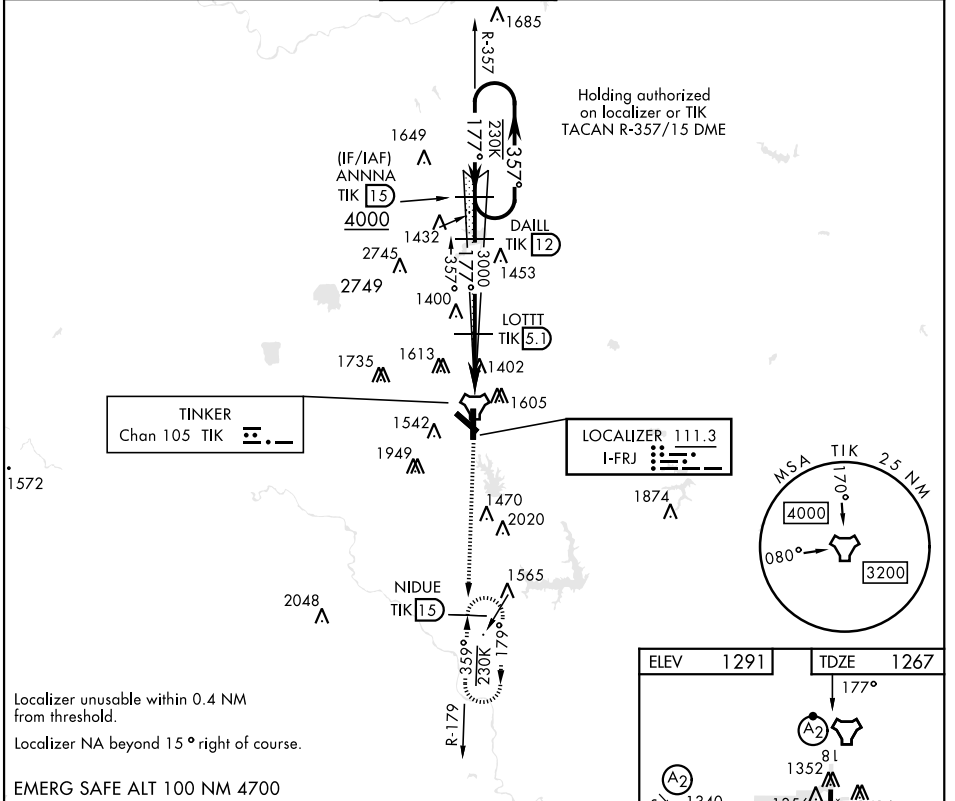
▼ \* When ALS inop, increase all CAT to 55 and vis to 1 mile.  
 \*\* CAT E Circling NA in sector S of Rwy 13-31 and W of Rwy 18-36.  
 Circling NA to Rwy 18.

SALSF



MISSED APPROACH: Climb to 4000 on TIK TACAN R-179 to NIDUE and hold.

ATIS ★ <b>270.1</b>	OKE CITY APP CON <b>124.2 336.4</b>	TOWER <b>124.45 251.05</b>	GND CON <b>121.8 275.8</b>	CLNC DEL <b>119.7 335.8</b>	ASR
------------------------	--	-------------------------------	-------------------------------	--------------------------------	-----

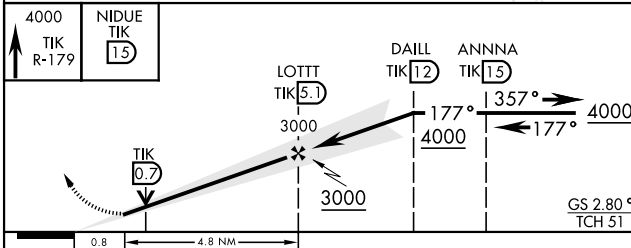


SC-1, 16 APR 2026 to 14 MAY 2026

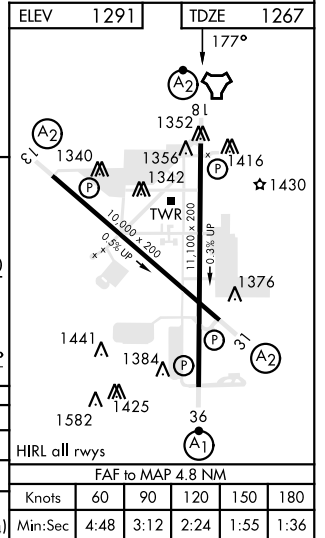
SC-1, 16 APR 2026 to 14 MAY 2026

Localizer unusable within 0.4 NM from threshold.  
 Localizer NA beyond 15° right of course.

EMERG SAFE ALT 100 NM 4700



CATEGORY	A	B	C	D	E
S-ILS 18	1467/40		200	(200-¾)	
S-LOC 18 *	1640/40		373	(400-¾)	
CIRCLING**	1900-1 609 (700-1)	1960-1¾ 669 (700-1¾)	1960-2 669 (700-2)	1960-2¼ 669 (700-2¼)	



OKLAHOMA CITY, OKLAHOMA

35°25'N-97°23'W

TINKER AFB (KTIK)

Amtd 5 13JUN24

# ILS or LOC/DME Z RWY 18