

# LOC/DME RWY 31

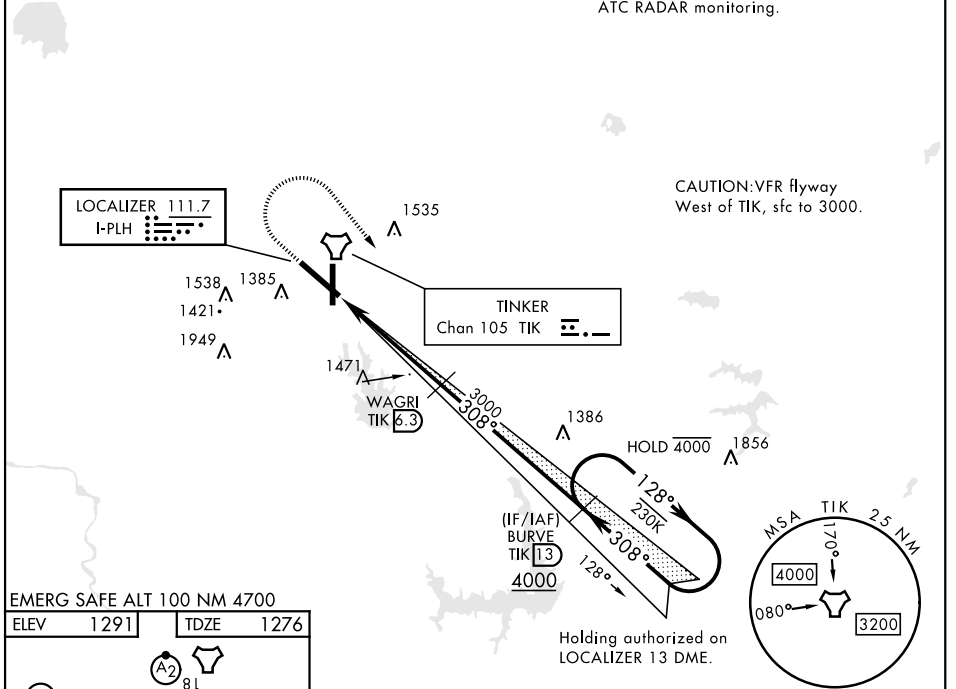
LOC I-PLH <b>111.7</b>	APCH CRS <b>308°</b>	Rwy ldg <b>10,000</b> TDZE <b>1276</b> Arprt Elev <b>1291</b>	[USAF]	TINKER AFB (KTIK)
---------------------------	-------------------------	---	--------	-------------------

RADAR required	SALS (A2)	† MISSED APPROACH: Climb straight ahead to 2500, then turn right to 4000 direct I-PLH and TIK 13 DME (BURVE) and hold.
----------------	--------------	--

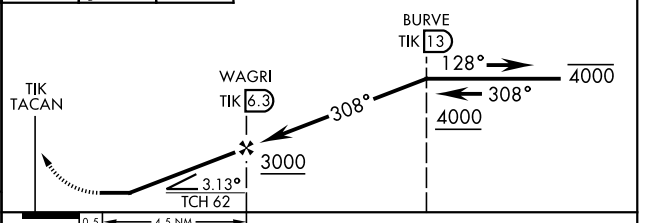
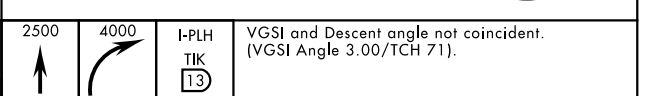
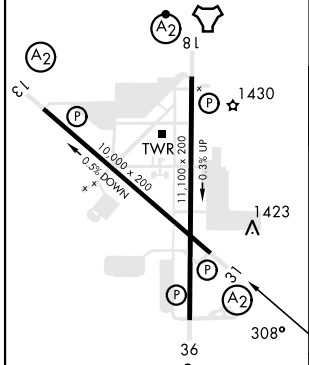
ATIS ★ <b>270.1</b>	OKC CITY APP CON <b>120.45 288.325</b>	TOWER <b>124.45 251.05</b>	GND CON <b>121.8 275.8</b>	CLNC DEL <b>119.7 335.8</b>	ASR
------------------------	---	-------------------------------	-------------------------------	--------------------------------	-----

When VGSI inop, procedure NA at night

† Missed approach requires use of RNAV or ATC RADAR monitoring.



EMERG SAFE ALT 100 NM 4700  
ELEV 1291 TDZE 1276



HIRL all rwys	FAF to MAP 4.5 NM				
Knots	60	90	120	150	180
Min:Sec	4:30	3:00	2:15	1:48	1:30
CATEGORY	A	B	C	D	E
S-LOC 31*	1740/50 464 (500-1)	1740/60 464 (500-1½)			
CIRCLING**	1840-1 549 (600-1)	1960-1½ 669 (700-1¾)	1980-2¼ 689 (700-2¼)	1960-2¼ 669 (700-2¼)	

# LOC/DME RWY 31

SC-1, 16 APR 2026 to 14 MAY 2026

SC-1, 16 APR 2026 to 14 MAY 2026