

OKLAHOMA CITY, OKLAHOMA

RNAV (GPS) RWY 18

APCH CRS	Rwy Idg	11,100
176°	THRE	1260
	Arprt Elev	1291

(USAF)

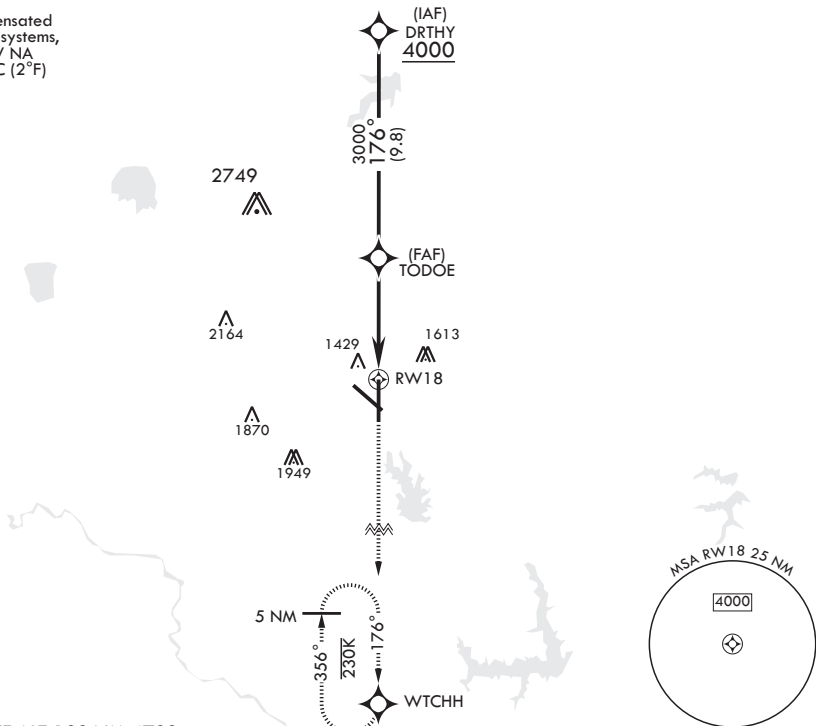
TINKER AFB (KTIK)

<p>▼ * Cat E Circling not authorized in sector S of Rwy 13-31 and W of Rwy 18-36.</p>	<p>SALSF</p>	<p>MISSED APPROACH: Climb to 4000 direct WTCHH waypoint and hold.</p>
---	--------------	---

<p>ATIS★</p> <p>270.1</p>	<p>OKE CITY APP CON/DEP CON</p> <p>124.2 336.4</p>	<p>TOWER</p> <p>124.45 251.05</p>	<p>GND CON</p> <p>121.8 275.8</p>	<p>CLNC DEL</p> <p>119.7 335.8</p>	<p>ASR</p>
---------------------------	--	-----------------------------------	-----------------------------------	------------------------------------	------------

DME/DME RNP-0.3 NA

For uncompensated Baro-VNAV systems, LNAV/VNAV NA below -17°C (2°F)



EMERG SAFE ALT 100 NM 4700

<p>DRTHY</p> <p>4000</p> <p>GP 3.00°</p> <p>TCH 50</p>	<p>VGSI and descent angles not coincident.</p> <p>4000</p> <p>WTCHH</p> <p>ELEV 1291</p>	<p>THRE 1260</p> <p>176°</p> <p>1340 1356 1342 TWR</p> <p>10,000 x 200</p> <p>0.5% UP</p> <p>BCN 1430</p> <p>1376</p> <p>1441 1384</p> <p>1425</p> <p>36</p> <p>HIRL all rwys</p>			
<p>3000</p> <p>176°</p> <p>1.4 NM to RWY 18</p> <p>5.2 NM</p>					
CATEGORY	A	B	C	D	E
LNAV/VNAV DA	1720-1¼		460	(500-1¼)	
LNAV MDA	1720/40	460 (500-¾)	1720/55	460	(500-1)
CIRCLING*	1820-1 529 (600-1)		2000-2 709 (800-2)	2040-2½ 749 (800-2½)	2040-2¾ 749 (800-2¾)

OKLAHOMA CITY, OKLAHOMA

35°25'N - 97°23'W

TINKER AFB (KTIK)

Orig 13JUN24

RNAV (GPS) RWY 18

SC-1, 16 APR 2026 to 14 MAY 2026

SC-1, 16 APR 2026 to 14 MAY 2026