

# TACAN Z RWY 18

TACAN TIK Chan <b>105</b>	APCH CRS <b>176°</b>	Rwy ldg <b>11,100</b> TDZE <b>1267</b> Arprt Elev <b>1291</b>
------------------------------	-------------------------	---

[USAF]

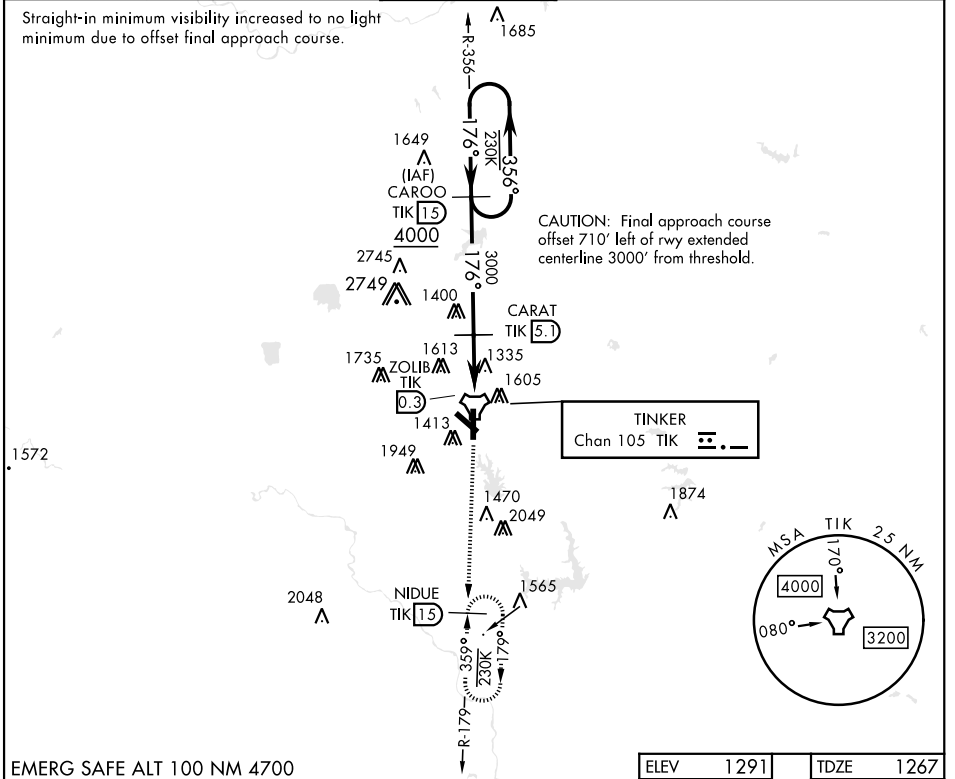
TINKER AFB (KTIC)

▼ \* CAT E Circling NA in sector S of Rwy 13-31 and W of Rwy 18-36. Circling NA to Rwy 18.

SALSF  MISSED APPROACH: Climb to 4000 on TIK TACAN R-179 to NIDUE and hold. Missed approach requires use of RNAV or ATC monitoring.

ATIS ★ <b>270.1</b>	OKE CITY APP CON <b>124.2 336.4</b>	TOWER <b>124.45 251.05</b>	GND CON <b>121.8 275.8</b>	CLNC DEL <b>119.7 335.8</b>	ASR
------------------------	--	-------------------------------	-------------------------------	--------------------------------	-----

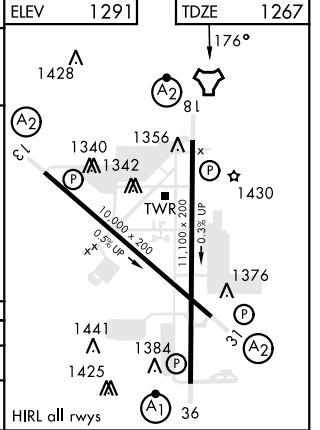
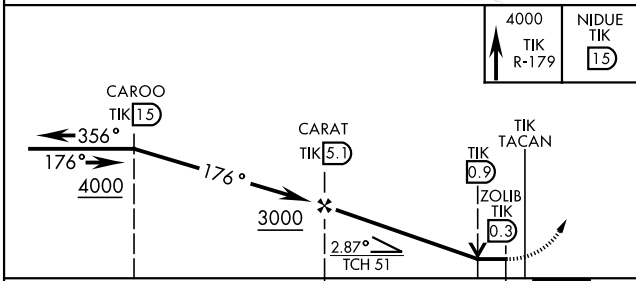
Straight-in minimum visibility increased to no light minimum due to offset final approach course.



SC-1, 16 APR 2026 to 14 MAY 2026

SC-1, 16 APR 2026 to 14 MAY 2026

EMERG SAFE ALT 100 NM 4700



CATEGORY	A	B	C	D	E
S-18	1720/55 453 (500-1)		1720-1½ 453		(500-1½)
CIRCLING*	1820-1 529 (600-1)	1840-1 549 (600-1)	1960-1¾ 669 (700-1¾)	1960-2 669 (700-2)	1960-2¼ 669 (700-2¼)

# TACAN Z RWY 18