

TACAN Z RWY 36

TACAN TIK Chan 105	APCH CRS 359°	Rwy Idg 11,100 TDZE 1291 Arprt Elev 1291
------------------------------	-------------------------	---

[USAF]

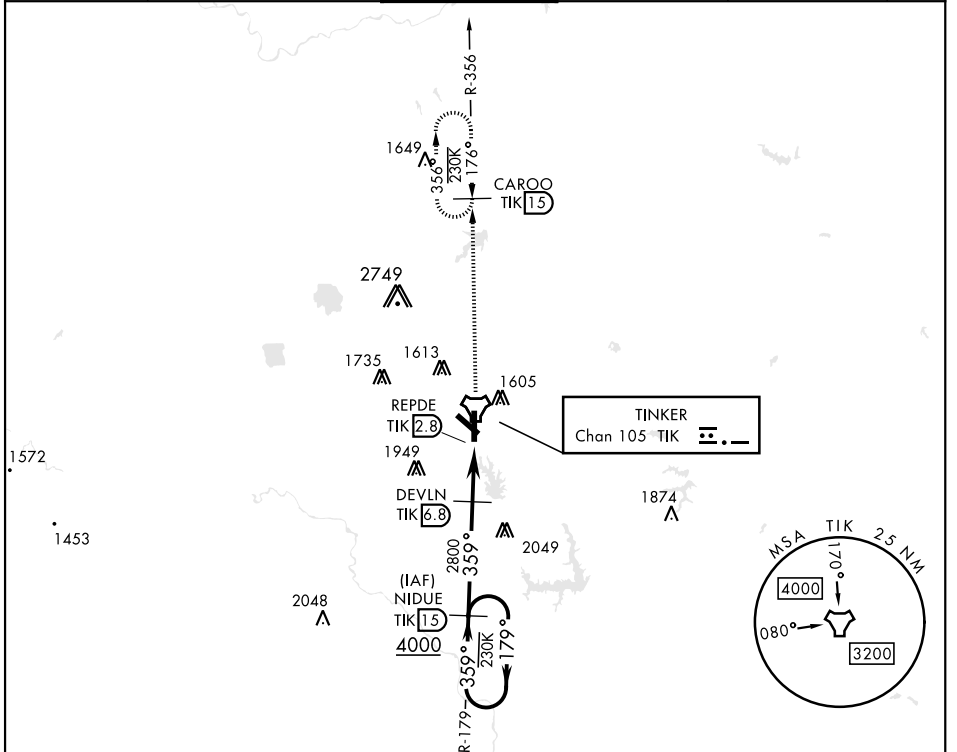
TINKER AFB (KTIK)

▼ * When ALS inop, increase CAT AB RVR to 50 and vis to 1 mile, CAT CDE increase vis by ½ mile.
 ** CAT E Circling not authorized in sector S of Rwy 13-31 and W of Rwy 18-36. Circling NA to Rwy 18.

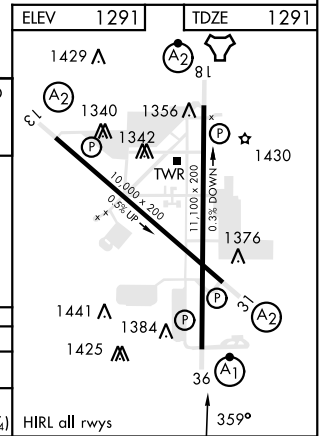
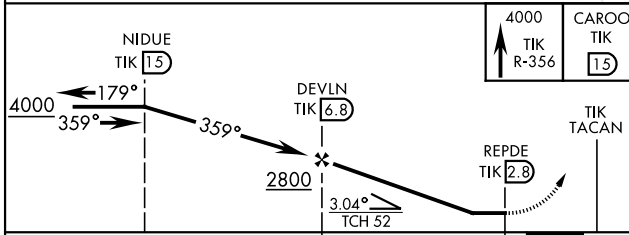


MISSED APPROACH: Climb to 4000 on TIK TACAN R-356 to CAROO and hold.

ATIS ★ 270.1	OKE CITY APP CON 120.45 288.325	TOWER 124.45 251.05	GND CON 121.8 275.8	CLNC DEL 119.7 335.8	ASR
------------------------	---	-------------------------------	-------------------------------	--------------------------------	-----



EMERG SAFE ALT 100 NM 4700



CATEGORY	A	B	C	D	E
S-36*	1720/24	429 (500-½)	1720/40	429 (500-¾)	
CIRCLING**	1820-1	529 (600-1)	1960-1¾ 669 (700-1¾)	1960-2 669 (700-2)	1960-2¼ 669 (700-2¼)

OKLAHOMA CITY, OKLAHOMA

35°25'N-97°23'W

TINKER AFB (KTIK)

Amdt 3 13JUN24

TACAN Z RWY 36

SC-1, 16 APR 2026 to 14 MAY 2026

SC-1, 16 APR 2026 to 14 MAY 2026