

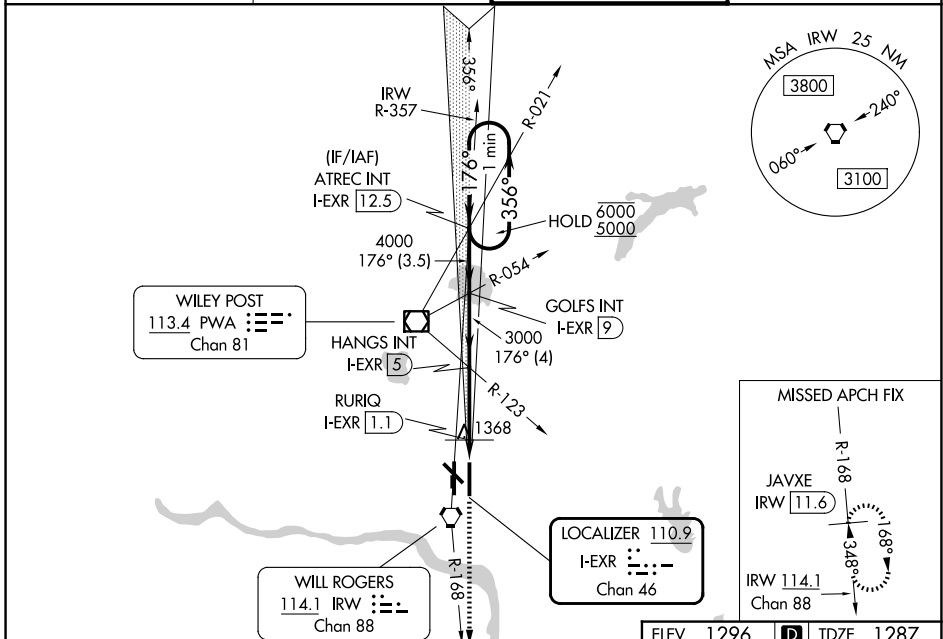
LOC/DME I-EXR 110.9 Chan 46	APP CRS 176°	Rwy Ldg TDZE 1287 Apt Elev 1296
---	------------------------	---

ILS or LOC RWY 17L

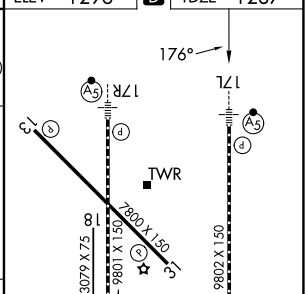
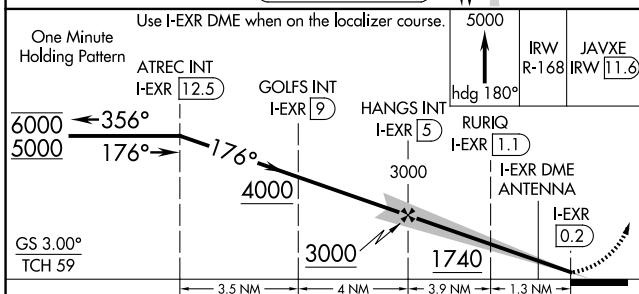
OKC WILL ROGERS INTL (OKC)

DME required. RADAR required for procedure entry.	MALSR 	MISSED APPROACH: Climb to 5000 on heading 180° and on IRW VORTAC R-168 to JAVXE/IRW 11.6 DME and hold, continue climb-in-hold to 5000.
<p>ASR Simultaneous approach authorized. Inop table does not apply to S-ILS 17L. For inop ALS, increase S-LOC 17L visibilities Cats A and B to RVR 5500, and Cat E to 1$\frac{3}{8}$ SM. RURIQ Fix Minimums: For inop ALS, increase S-LOC 17L visibilities Cats A and B to RVR 5500, and Cats C, D, and E to RVR 6000. Autopilot coupled approach NA below 1840.</p>		

D-ATIS 125.85	OKE CITY APP CON 124.6 266.8	ROGERS TOWER 119.35 269.45	GND CON 121.9 348.6
-------------------------	--	--------------------------------------	-------------------------------



ELEV 1296	D TDZE 1287
-----------	--------------------



CATEGORY	A	B	C	D	E
S-ILS 17L	1487/40 200 (200- $\frac{3}{4}$)				
S-LOC 17L	1740/40	453 (500- $\frac{3}{4}$)	1740/45	453 (500- $\frac{7}{8}$)	
CIRCLING	1740-1 444 (500-1)	1760-1 464 (500-1)	1960-1 $\frac{3}{4}$ 664 (700-1 $\frac{3}{4}$)	2000-2 $\frac{1}{4}$ 704 (800-2 $\frac{1}{4}$)	2240-3 944 (1000-3)
RURIQ FIX MINIMUMS					
S-LOC 17L	1680/40 393 (400- $\frac{3}{4}$)				
CIRCLING	1740-1 444 (500-1)	1760-1 464 (500-1)	1960-1 $\frac{3}{4}$ 664 (700-1 $\frac{3}{4}$)	2000-2 $\frac{1}{4}$ 704 (800-2 $\frac{1}{4}$)	2240-3 944 (1000-3)

MIRL Rwy 13-31
TDZL/RCLS Rwy 35R
HIRL Rwys 17L-35R and 17R-35L
REIL Rwys 13 and 31

SC-1, 16 APR 2026 to 14 MAY 2026

SC-1, 16 APR 2026 to 14 MAY 2026