


LOC/DME I-LIK 110.7 Chan 44	APP CRS 356°	Rwy Ldg TDZE Apt Elev	9800 1276 1296
---	------------------------	-----------------------------	---

ILS or LOC RWY 35L

OKC WILL ROGERS INTL (OKC)

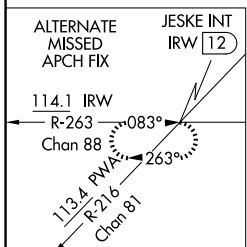
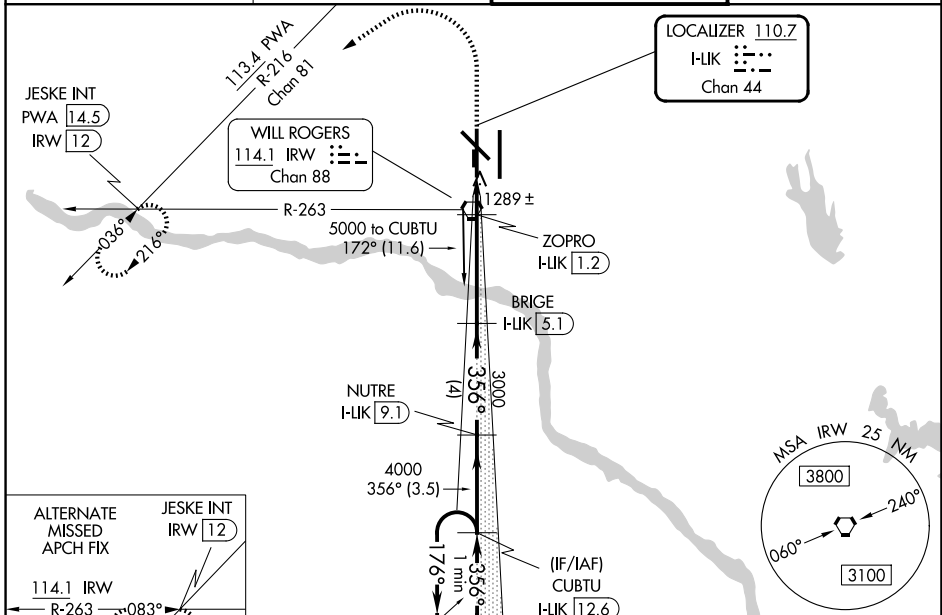
DME required.

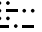
Simultaneous approach authorized. For inop ALS, increase S-ILS 35L Cat E visibility to RVR 4000 and S-LOC 35L Cats C, D, and E visibility to RVR 5500.
* RVR 1800 authorized with use of FD or AP or HUD to DA.

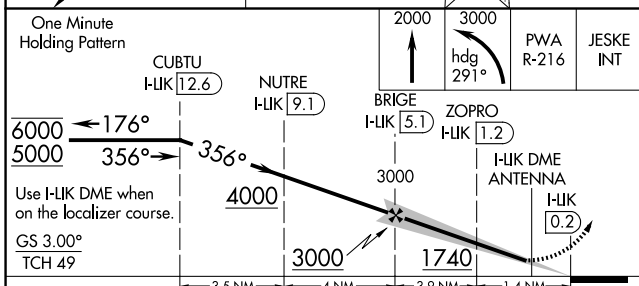
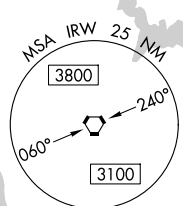
MALSR 

MISSED APPROACH: Climb to 2000 then climbing left turn to 3000 on heading 291° and on PWA VOR/DME R-216 to JESKE INT/PWA 14.5 DME and hold.

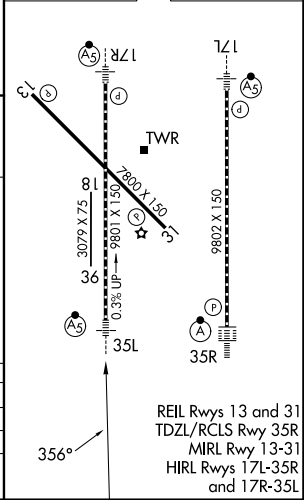
D-ATIS 125.85	OKC CITY APP CON 124.6 266.8	ROGERS TOWER 119.35 269.45	GND CON 121.9 348.6
-------------------------	--	--------------------------------------	-------------------------------



LOCALIZER 110.7
I-LIK 
Chan 44



ELEV 1296	D TDZE 1276
-----------	--------------------



CATEGORY	A	B	C	D	E
S-ILS 35L*	1476/24 200 (200-½)				
S-LOC 35L	1640/24	364 (400-½)	1640/35		364 (400-¾)
CIRCLING	1740-1 444 (500-1)	1760-1 464 (500-1)	1960-1¾ 664 (700-1¾)	2000-2¼ 704 (800-2¼)	2240-3 944 (1000-3)

REIL Rwy 13 and 31
TDZL/RCLS Rwy 35R
MIRL Rwy 13-31
HIRL Rwy 17L-35R
and 17R-35L

SC-1, 16 APR 2026 to 14 MAY 2026

SC-1, 16 APR 2026 to 14 MAY 2026