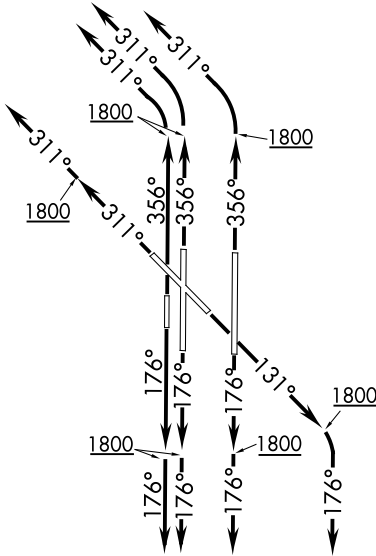


MUDDE THREE DEPARTURE (RNAV)

**TOP ALTITUDE:
ASSIGNED BY ATC**

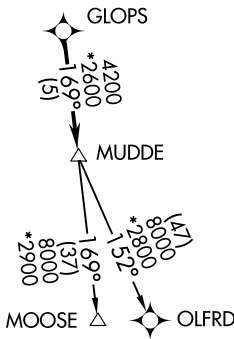
D-ATIS 125.85
CLNC DEL 124.35
GND CON 121.9 348.6
ROGERS TOWER 119.35 269.45
OKE CITY DEP CON 124.6 266.8



TAKEOFF MINIMUMS:

Rwy 13, 17L/R, 18, 31, 35L/R, 36:
Standard with minimum climb of 500' per NM to 1800.

NOTE: RADAR required.
NOTE: DME/DME/IRU or GPS required.
NOTE: RNAV 1.



NOTE: Chart not to scale.

DEPARTURE ROUTE DESCRIPTION

TAKEOFF RWY 13: Climb heading 131° to 1800, then right turn heading 176° or as assigned by ATC, expect RADAR vectors to GLOPS, thence. . . .

TAKEOFF RWY 17L/R, 18: Climb heading 176° to 1800, then heading 176° or as assigned by ATC, expect RADAR vectors to GLOPS, thence. . . .

TAKEOFF RWY 31: Climb heading 311° to 1800, then heading 311° or as assigned by ATC, expect RADAR vectors to GLOPS, thence. . . .

TAKEOFF RWY 35L/R, 36: Climb heading 356° to 1800, then left turn heading 311° or as assigned by ATC, expect RADAR vectors to GLOPS, thence. . . .

. . . . on track 169° to MUDD3, then on (transition). Maintain 5000 or as assigned by ATC. Expect filed altitude 10 minutes after departure.

MOOSE TRANSITION (MUDDE3.MOOSE):

OLFRD TRANSITION (MUDDE3.OLFRD):

MUDDE THREE DEPARTURE (RNAV)