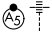


# RNAV (RNP) Z RWY 17L

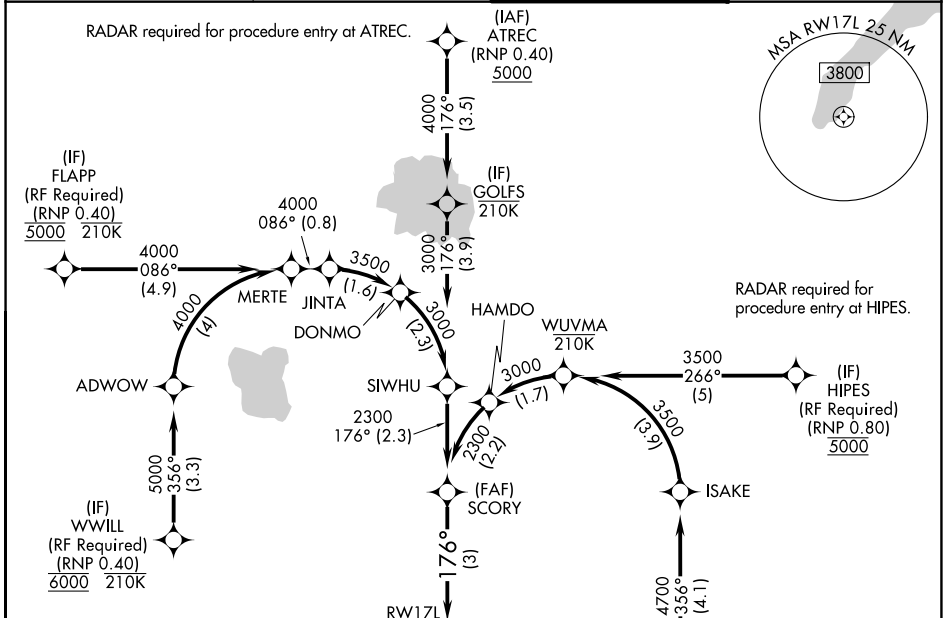
OKC WILL ROGERS INTL (OKC)

APP CRS	Rwy Ldg	<b>9802</b>
<b>176°</b>	TDZE	<b>1287</b>
	Apt Elev	<b>1296</b>

**ASR** For uncompensated Baro-VNAV systems, procedure NA below -12°C (11°F) or above 54°C (130°F). GPS required. Simultaneous approach authorized with Rwy 17R. Use of FD or AP providing RNAV track guidance required during simultaneous operations.

**MALSR**  
 MISSED APPROACH: Climb to 5000 on track 176° to JAVXE and hold, continue climb-in-hold to 5000.

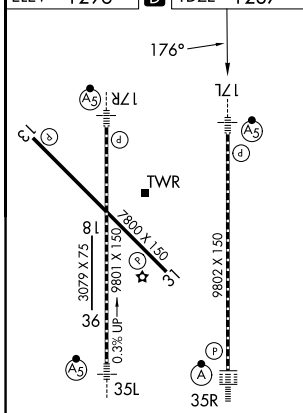
D-ATIS <b>125.85</b>	OKE CITY APP CON <b>124.6 266.8</b>	ROGERS TOWER <b>119.35 269.45</b>	GND CON <b>121.9 348.6</b>
-------------------------	--	--------------------------------------	-------------------------------



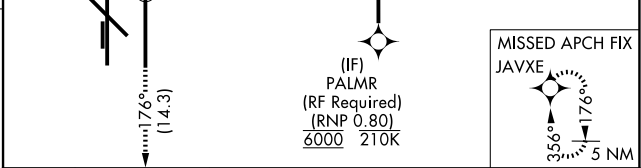
SC-1, 16 APR 2026 to 14 MAY 2026

SC-1, 16 APR 2026 to 14 MAY 2026

ELEV 1296	<b>D</b>	TDZE 1287
-----------	----------	-----------



REIL Rwy 13 and 31  
 TDZL/RCLS Rwy 35R  
 MIRL Rwy 13-31  
 HIRL Rwy 17L-35R and 17R-35L



5000	↑	tr 176°	JAVXE	See planview for multiple IF locations.	SCORY 2300

CATEGORY	A	B	C	D
RNP 0.11 DA		1555/24	268 (300-½)	
RNP 0.20 DA		1643/34	356 (400-¾)	
RNP 0.30 DA		1724/49	437 (500-1)	

## AUTHORIZATION REQUIRED