

RNAV (RNP) Z RWY 35L

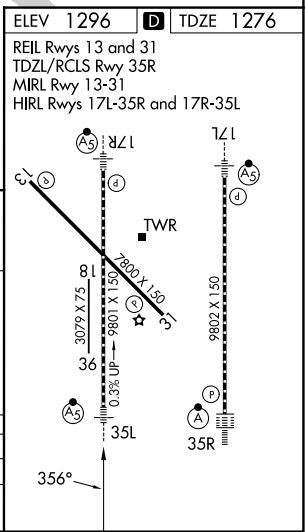
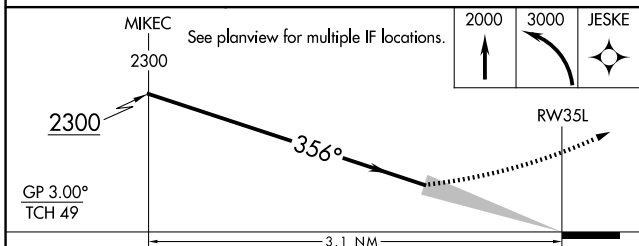
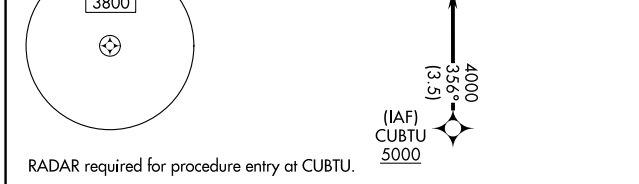
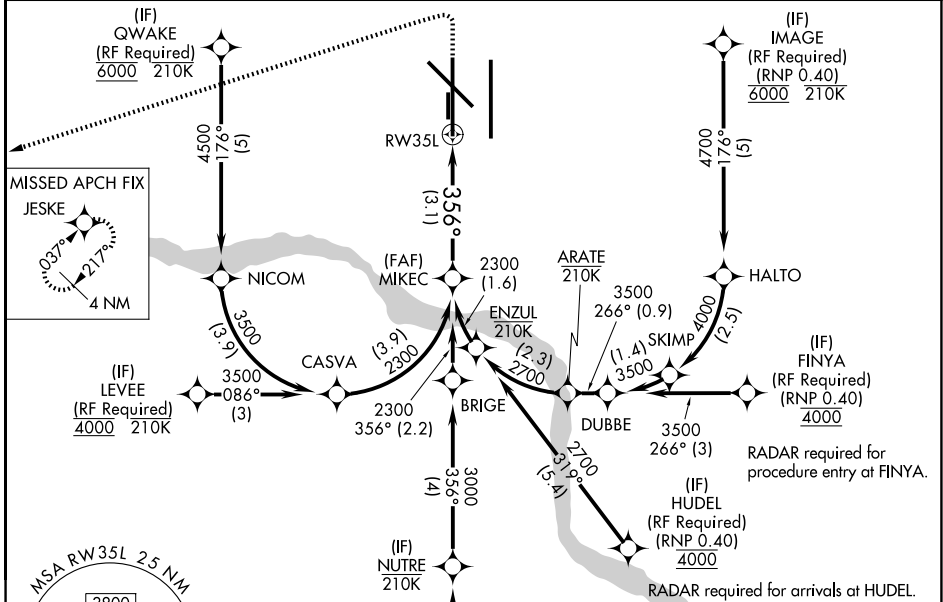
OKC WILL ROGERS INTL (OKC)

APP CRS 356°	Rwy Ldg 9800
	TDZE 1276
	Apt Elev 1296

ASR For uncompensated Baro-VNAV systems, procedure NA below -12°C (11°F) or above 54°C (130°F). GPS required. Simultaneous approach authorized with Rwy 35R. Use of FD or AP providing RNAV track guidance required during simultaneous operations. For inop ALS, increase RNP 0.30 all Cats visibility to 1/4 SM.

MALSR MISSED APPROACH: Climb to 2000 then climbing left turn to 3000 direct JESKE and hold.

D-ATIS 125.85	OKE CITY APP CON 124.6 266.8	ROGERS TOWER 119.35 269.45	GND CON 121.9 348.6
-------------------------	--	--------------------------------------	-------------------------------



CATEGORY	A	B	C	D
RNP 0.30 DA		1646/38	370 (400-3/4)	

AUTHORIZATION REQUIRED

SC-1, 16 APR 2026 to 14 MAY 2026

SC-1, 16 APR 2026 to 14 MAY 2026