

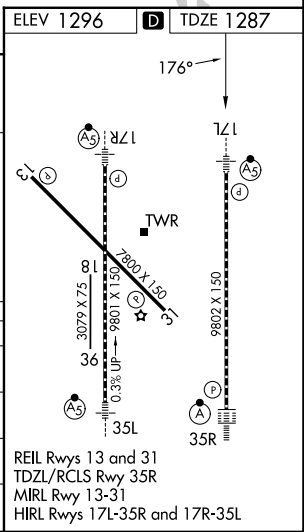
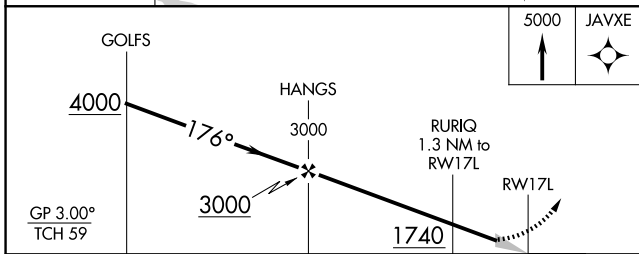
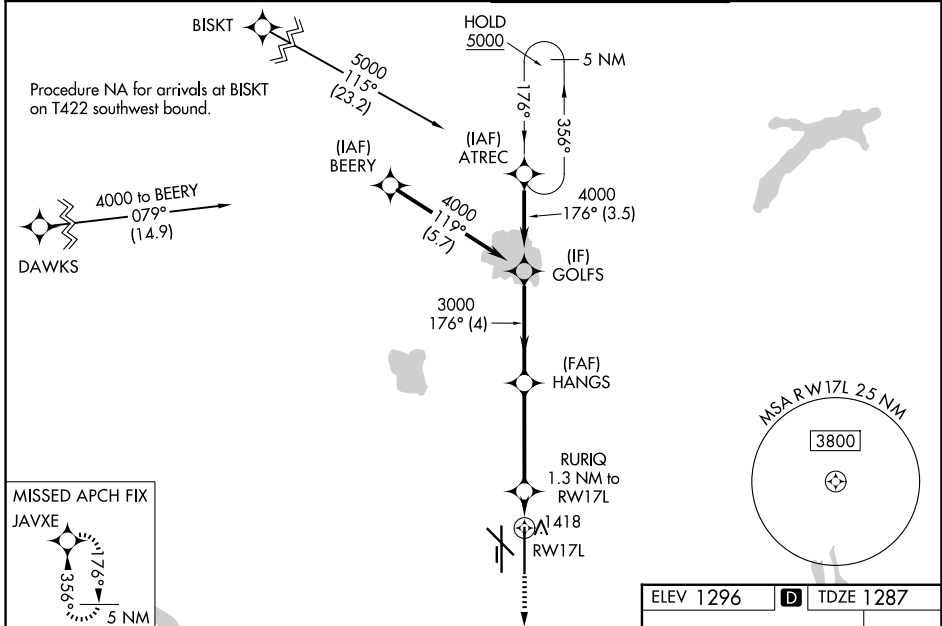
WAAS CH <b>56503</b> <b>W17B</b>	APP CRS <b>176°</b>	Rwy Ldg TDZE <b>1287</b> Apt Elev <b>1296</b>
--	------------------------	---

# RNAV (GPS) Y RWY 17L

OKC WILL ROGERS INTL (OKC)

RNP APCH - GPS.		MALSR 	MISSED APPROACH: Climb to 5000 direct JAVXE and hold, continue climb-in-hold to 5000.
For uncompensated Baro-VNAV systems, LNAV/VNAV NA below -12°C or above 54°C. LNAV procedure NA during simultaneous operations. Simultaneous approach authorized. Use of FD or AP required during simultaneous operations. For inop ALS, increase LPV Cat E visibility to RVR 4000, LNAV/VNAV Cat E visibility to RVR 4500, and LNAV all Cats visibility to RVR 5500. * RVR 1800 authorized with use of FD or AP or HUD to DA.			

D-ATIS <b>125.85</b>	OKE CITY APP CON <b>124.6 266.8</b>	ROGERS TOWER <b>119.35 269.45</b>	GND CON <b>121.9 348.6</b>
-------------------------	--	--------------------------------------	-------------------------------



CATEGORY	A	B	C	D	E
LPV DA*	1487/24		200 (200-½)		
LNAV/VNAV DA	1590/24		303 (300-½)		
LNAV MDA	1680/24	393 (400-½)	1680/35		393 (400-⅝)
CIRCLING	1740-1 444 (500-1)	1760-1 464 (500-1)	1960-1¾ 664 (700-1¾)	2000-2¼ 704 (800-2¼)	2240-3 944 (1000-3)

SC-1, 16 APR 2026 to 14 MAY 2026

SC-1, 16 APR 2026 to 14 MAY 2026