

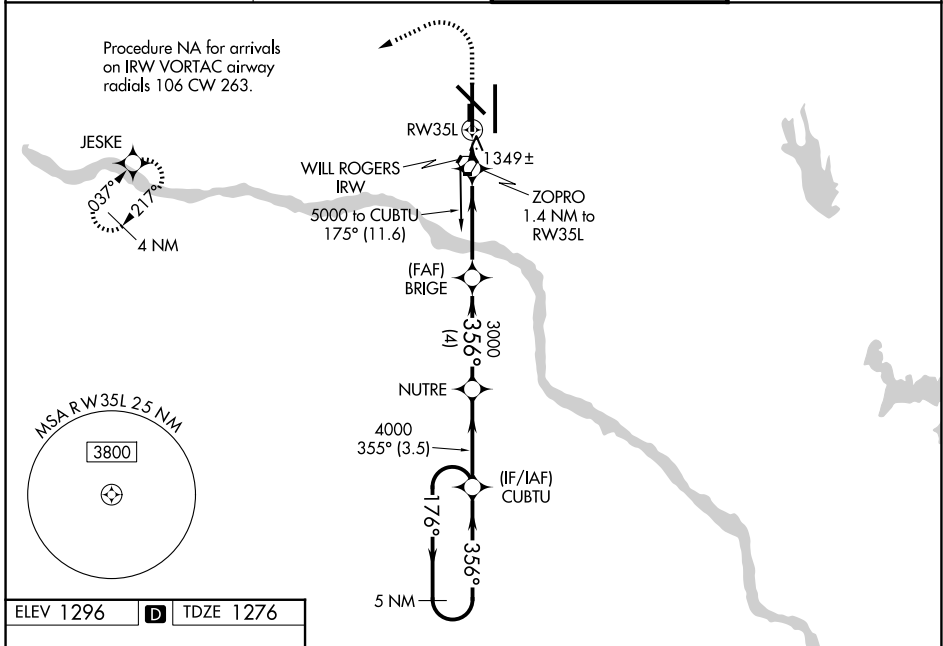
WAAS CH 56202 W35A	APP CRS 356°	Rwy Ldg 9800 TDZE 1276 Apt Elev 1296
--	------------------------	---

RNAV (GPS) Y RWY 35L

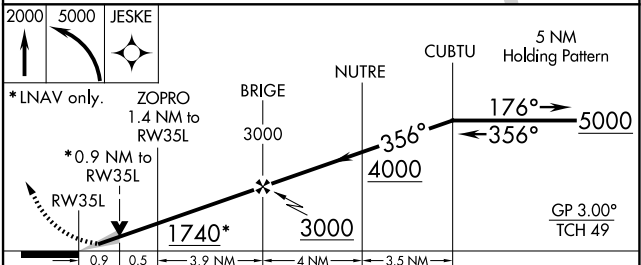
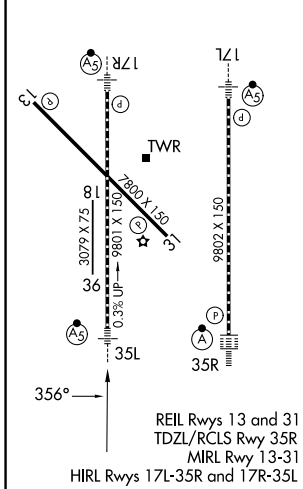
OKC WILL ROGERS INTL (OKC)

For uncompensated Baro-VNAV systems, LNAV/VNAV NA below -12°C (11°F) or above 54°C (130°F). DME/DME RNP-0.3 NA. For inop MALSR, increase LPV and LNAV/VNAV Cat E visibility to RVR 4000. Increase LNAV Cat A/B visibility to RVR 5500 and Cat C/D/E to RVR 5000. Simultaneous approach authorized with Rwy 35R. LNAV procedure NA during simultaneous operations. Use of FD or AP providing RNAV track guidance required during simultaneous operations. **RVR 1800 authorized with use of FD or AP or HUD to DA.	MALSR	MISSED APPROACH: Climb to 2000 then climbing left turn to 5000 direct JESKE and hold.

D-ATIS 125.85	OKC CITY APP CON 124.6 266.8	ROGERS TOWER 119.35 269.45	GND CON 121.9 348.6
-------------------------	--	--------------------------------------	-------------------------------



ELEV 1296	D	TDZE 1276
-----------	----------	-----------



CATEGORY	A	B	C	D	E
LPV DA**		1476/24	200 (200-½)		
LNAV/VNAV DA		1543/24	267 (300-½)		
LNAV MDA	1600/24	324 (400-½)	1600/26	324 (400-½)	
CIRCLING	1740-1 444 (500-1)	1760-1 464 (500-1)	1960-1¾ 664 (700-1¾)	2000-2¼ 704 (800-2¼)	2240-3 944 (1000-3)

SC-1, 16 APR 2026 to 14 MAY 2026

SC-1, 16 APR 2026 to 14 MAY 2026