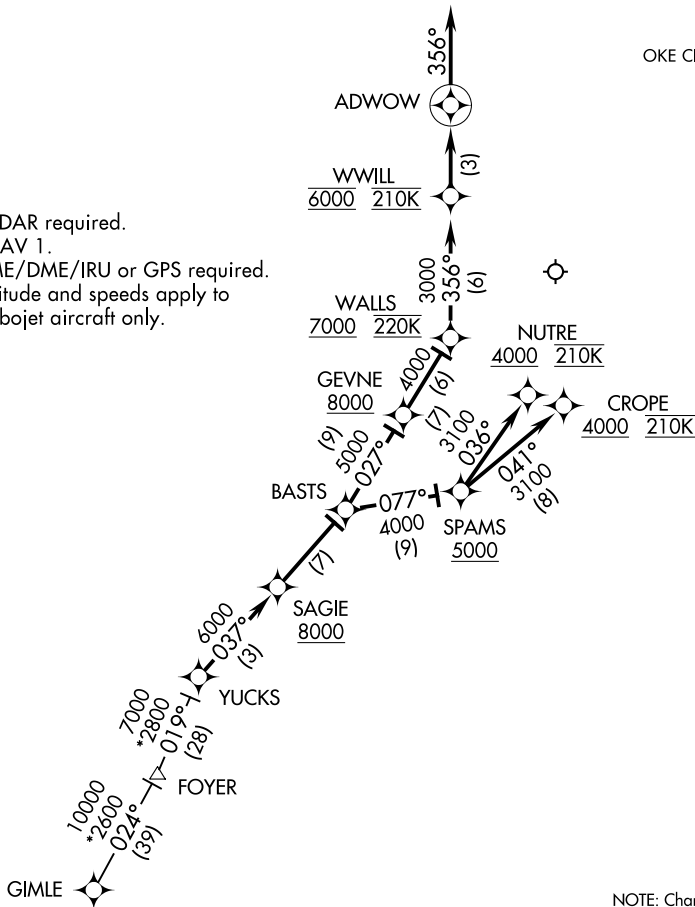


OKC D-ATIS
 125.85
 OKC CITY APP CON
 124.6 266.8

NOTE: RADAR required.
 NOTE: RNAV 1.
 NOTE: DME/DME/IRU or GPS required.
 NOTE: Altitude and speeds apply to turbojet aircraft only.



NOTE: Chart not to scale.

ARRIVAL ROUTE DESCRIPTION

GIMLE TRANSITION (GIMLE.YUCKS3):

From YUCKS on track 037° to cross SAGIE at or above 8000, then on track 037° to BASTS.

LANDING RWY 17L/R: From BASTS on track 027° to cross GEVNE at or above 8000, then on track 027° to cross WALLS at or above 7000 and at 220K, then on track 356° to cross WWILL at 6000 and at 210K, then on track 356° to ADWOW, then on track 356°.
 Expect radar vectors to final approach course.

LANDING RWY 35L: From BASTS on track 077° to cross SPAMS at or above 5000, then on track 036° to cross NUTRE at or above 4000 and at 210K. Expect RNAV (RNP) approach.

LANDING RWY 35R: From BASTS on track 077° to cross SPAMS at or above 5000, then on track 041° to cross CROPE at or above 4000 and at 210K. Expect RNAV (RNP) approach.