

WAAS CH <b>86439</b> <b>W04A</b>	APP CRS <b>043°</b>	Rwy Ldg TDZE Apt Elev	<b>5132</b> <b>1080</b> <b>1087</b>
--	------------------------	-----------------------------	---

# RNAV (GPS) RWY 4

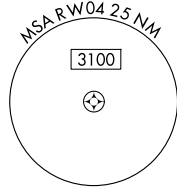
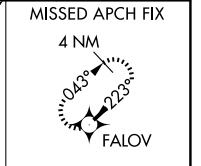
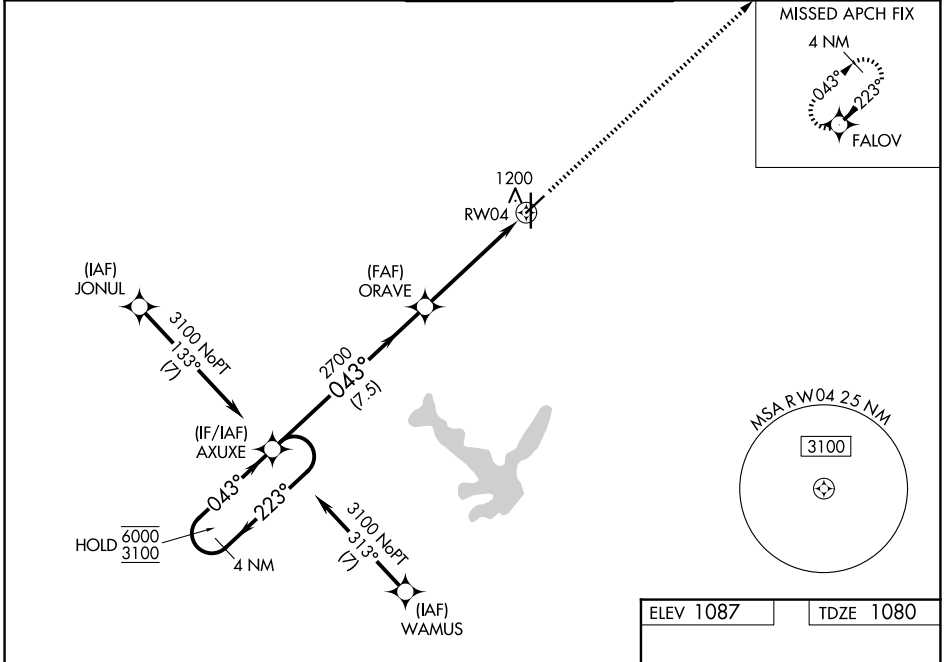
NEW CENTURY AIRCENTER (IXD)

RNP APCH - GPS.

**⚠** Baro-VNAV and VDP NA when using OJC altimeter setting. For uncompensated Baro-VNAV systems, LNAV/VNAV NA below -17°C or above 54°C. When local altimeter setting not received, use OJC altimeter setting; increase LPV DA to 1348 feet and LNAV/VNAV DA to 1448 feet and all MDA 20 feet; increase LNAV Cat C/D visibility 1/8 SM.

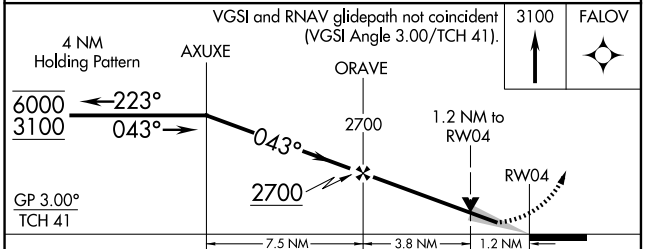
MISSED APPROACH: Climb to 3100 direct FALOW and hold.

ASOS <b>135.325</b>	KANSAS CITY APP CON <b>118.9 251.075</b>	NEW CENTURY TOWER ★ <b>133.0 (CTAF) 0</b>	GND CON <b>124.3</b>	UNICOM <b>122.95</b>
------------------------	---	--	-------------------------	-------------------------



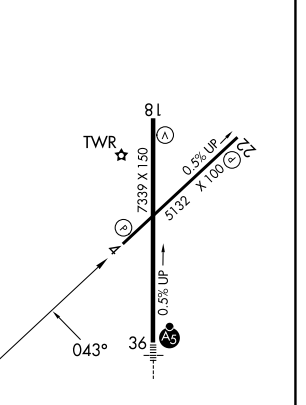
NC-2, 16 APR 2026 to 14 MAY 2026

NC-2, 16 APR 2026 to 14 MAY 2026



ELEV 1087	TDZE 1080
-----------	-----------

CATEGORY	A	B	C	D
LPV DA	1330-1 250 (300-1)			
LNAV/VNAV DA	1430-1¼ 350 (400-1¼)			
LNAV MDA	1500-1	420 (500-1)	1500-1½	420 (500-1½)
CIRCLING	1560-1	473 (500-1)	1580-1½	1640-2 553 (600-2)



- REIL Rwy 18 0
- MIRL Rwy 4-22 0
- HIRL Rwy 18-36 0