

# ROYAL TWO DEPARTURE

AL-302 (FAA)

NEW CENTURY AIRCENTER (IXD)

OLATHE, KANSAS

NC-2, 16 APR 2026 to 14 MAY 2026

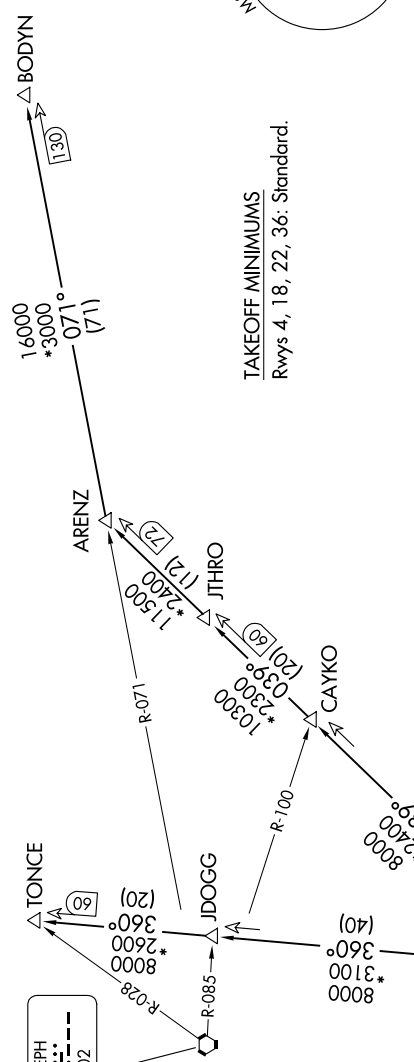
KANSAS CITY DEP CON  
118.9 251.075

ST. JOSEPH  
115.5 STJ  
Chan 102

KANSAS CITY  
113.25 MCI  
Chan 79(I)

TOP ALTITUDE:  
10000

RADAR and DME required.



## DEPARTURE ROUTE DESCRIPTION

**TAKEOFF ALL RUNWAYS:** Climb on assigned heading for RADAR vectors to appropriate route. Maintain 10000, expect filed altitude 10 minutes after departure.

**ARENZ TRANSITION (ROYAL2.ARENZ):** From over MCI VORTAC on MCI R-039 to ARENZ.

**BODYN TRANSITION (ROYAL2.BODYN):** From over MCI VORTAC on MCI R-039 to ARENZ, then on STJ R-071 to BODYN.

**TONCE TRANSITION (ROYAL2.TONCE):** From over MCI VORTAC on MCI R-360 to TONCE.

NOTE: Chart not to scale.

NC-2, 16 APR 2026 to 14 MAY 2026

# ROYAL TWO DEPARTURE

OLATHE, KANSAS

NEW CENTURY AIRCENTER (IXD)