

# WILDCAT SIX DEPARTURE

AL-302 (FAA)

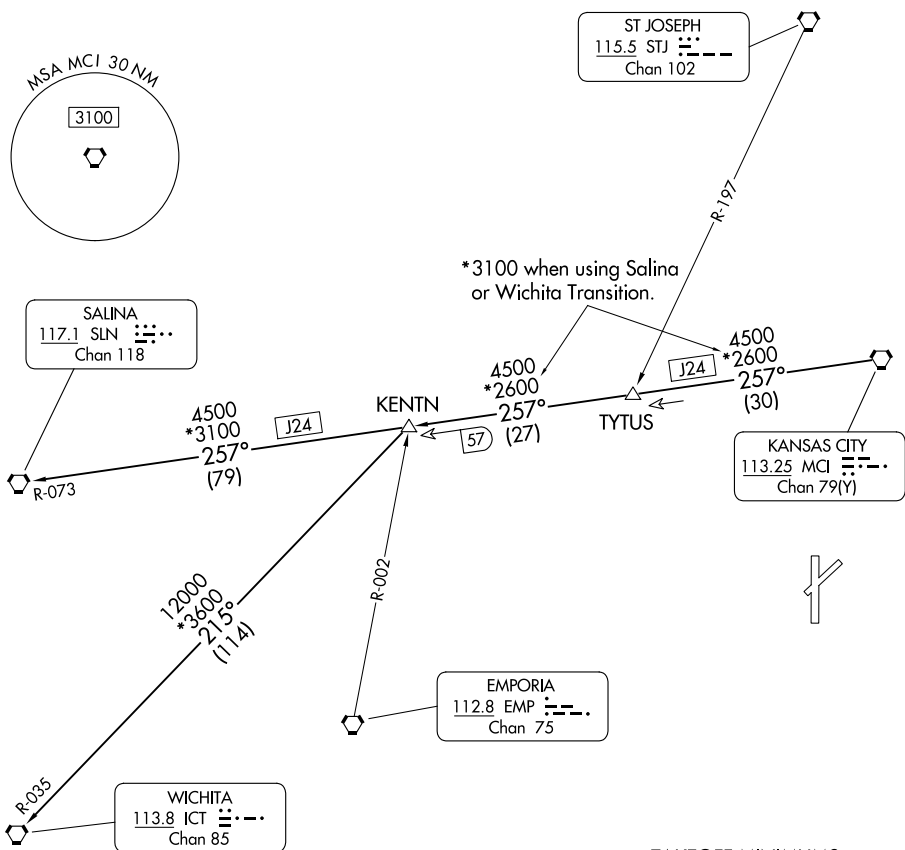
NEW CENTURY AIRCENTER (IXD)

OLATHE, KANSAS

KANSAS CITY DEP CON  
118.9 251.075

RADAR required.

**TOP ALTITUDE:  
10000**



NC-2, 16 APR 2026 to 14 MAY 2026

NC-2, 16 APR 2026 to 14 MAY 2026

TAKEOFF MINIMUMS  
Rwys 4, 18, 22, 36: Standard.

NOTE: Chart not to scale.

## DEPARTURE ROUTE DESCRIPTION

TAKEOFF ALL RUNWAYS: Climb on assigned heading for RADAR vectors to appropriate route. Maintain 10000, expect filed altitude 10 minutes after departure.

KENTN TRANSITION (WLDCT6.KENTN): From over MCI VORTAC on MCI R-257 to KENTN.

SALINA TRANSITION (WLDCT6.SLN): From over MCI VORTAC on MCI R-257 and SLN R-073 to SLN VORTAC.

WICHITA TRANSITION (WLDCT6.ICT): From over MCI VORTAC on MCI R-257 to KENTN, then on ICT R-035 to ICT VORTAC.

# WILDCAT SIX DEPARTURE

(WLDCT6.MCI) 05OCT23

OLATHE, KANSAS  
NEW CENTURY AIRCENTER (IXD)