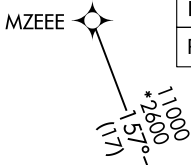


AANDY TWO ARRIVAL (RNAV)

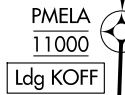
AL-304 (FAA)

OMAHA, NEBRASKA



RNAV 1 - DME/DME/IRU or GPS.
RADAR required.

OMAHA APP CON
124.5 263.0 EAST
135.875 354.05 WEST
KOFF ATIS
126.025 273.5
OMA D-ATIS
120.4



ARRIVAL ROUTE DESCRIPTION

MZEEE TRANSITION (MZEEE.AANDY2)

LANDING KOMA

From BRKSR on track 158° to AANDY, then on track 156° to CANIO.

LANDING RUNWAY 14L: From CANIO on track 207° to BLUFS, then on track 159° to cross LICIS at or above 4000. Expect RNAV (RNP) Z RWY 14L or RADAR vectors for the ILS RWY 14L approach.

LANDING RUNWAY 14R: From CANIO on track 210° to ERRLE, then on track 156° to cross OTSEE at 4000. Expect RNAV (RNP) Z RWY 14R or ILS RWY 14R approach.

LANDING RUNWAY 18: From CANIO on track 155° to cross TASKY at 4000. Expect RNAV (RNP) RWY 18 or ILS RWY 18 approach.

LANDING RUNWAYS 32L/R: From CANIO on track 152° to cross PTERZ at or above 6000 and at 220K, then on track 162° to cross BRIKK at or above 5000 and at 210K, then on track 162°. Expect RADAR vectors to final approach course.

LANDING KOFF

From BRKSR on track 158° to AANDY, then on track 180° to cross PMELA at 11000, then on track 180°. Expect RADAR vectors to final approach course.

NC-2, 16 APR 2026 to 14 MAY 2026

NC-2, 16 APR 2026 to 14 MAY 2026