

APP CRS **322°**  
 Rwy Ldg **9502**  
 TDZE **981**  
 Apt Elev **985**

# RNAV (RNP) Z RWY 32L

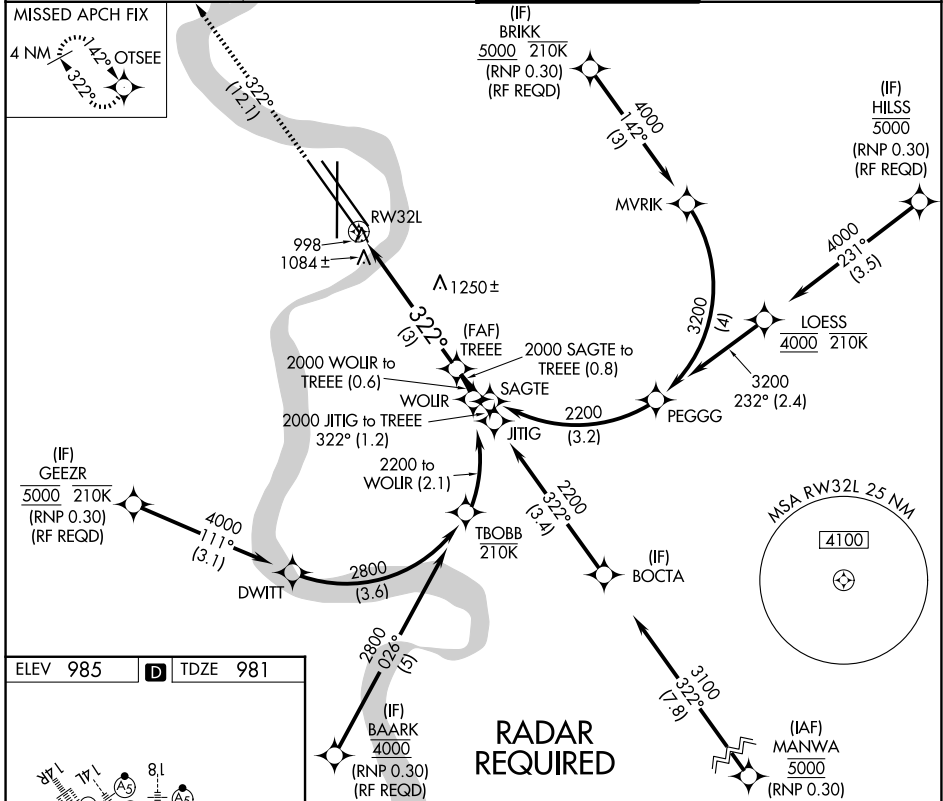
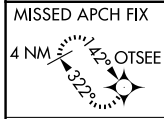
EPPLEY AIRFIELD (OMA)

**▼** For uncompensated Baro-VNAV systems, procedure NA below -19°C (-2°F) or above 54°C (130°F). When VGSI inop, procedure NA at night.  
 For inoperative ALS, increase RNP 0.15 all Cats visibility to 1¼ SM and RNP 0.30 all Cats visibility to 2¼ SM. GPS required.

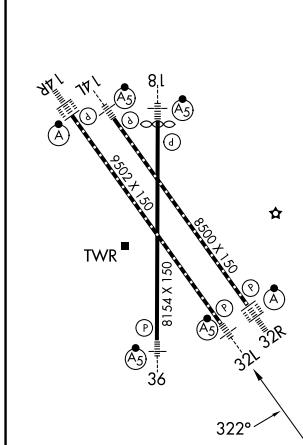


**MISSED APPROACH:**  
 Climb to 3300 on track 322° to OTSEE and hold.

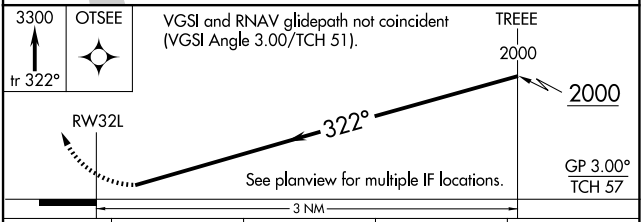
D-ATIS **120.4**      OMAHA APP CON **135.875 354.05**      OMAHA TOWER **132.1 256.9**      GND CON **121.9**



ELEV 985      TDZE 981



HIRL all Rwys  
 TDZ/CL Rwys 14R and 32R



CATEGORY	A	B	C	D
RNP 0.15 DA		1359/50	378 (400-1)	
RNP 0.30 DA		1624-1¾	643 (700-1¾)	

**AUTHORIZATION REQUIRED**

NC-2, 16 APR 2026 to 14 MAY 2026

NC-2, 16 APR 2026 to 14 MAY 2026