


APP CRS	Rwy Ldg	8153
358°	TDZE	979
	Apt Elev	985

RNAV (RNP) Z RWY 36

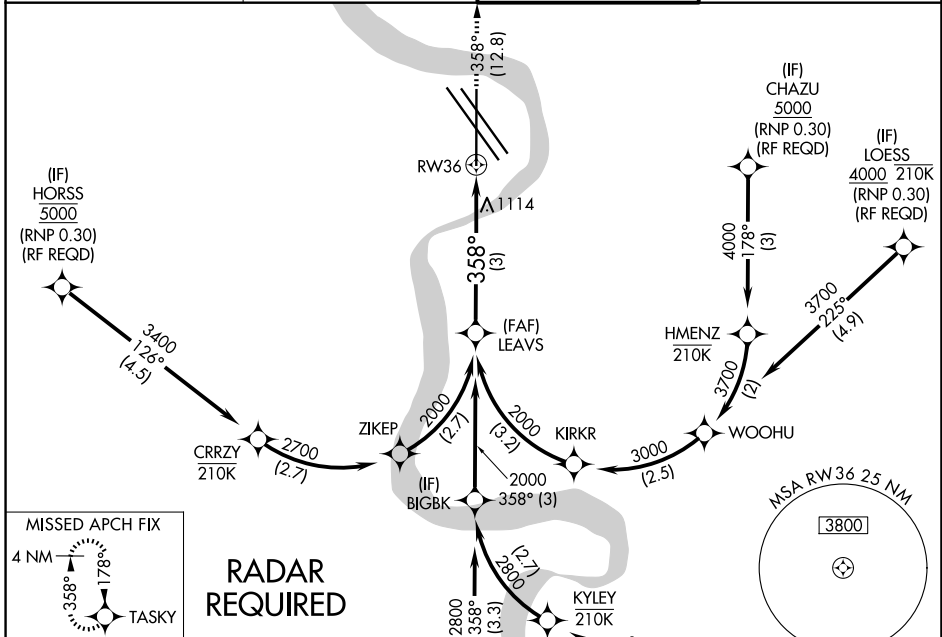
EPPLEY AIRFIELD (OMA)

▼ For uncompensated Baro-VNAV systems, procedure NA below -19°C (-2°F) or above 54°C (130°F). When VGSI inop, procedure NA at night. For inop ALS, increase RNP 0.30 all Cats visibility to 1½ SM. GPS required.

MALSR 

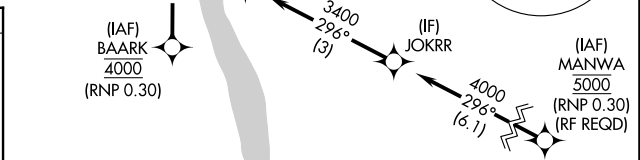
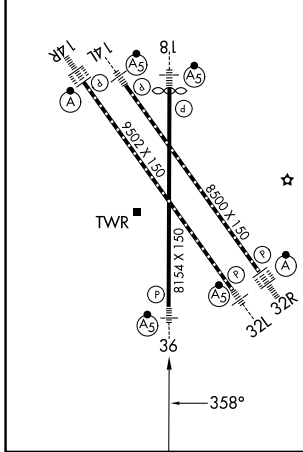
MISSED APPROACH: Climb to 3000 on track 358° to TASKY and hold.


D-ATIS 120.4	OMAHA APP CON 135.875 354.05	OMAHA TOWER 132.1 256.9	GND CON 121.9
------------------------	--	-----------------------------------	-------------------------



ELEV 985	D	TDZE 979
----------	----------	----------

HIRL all Rwys
TDZ/CL Rwys 14R and 32R



LEAVS	See planview for multiple IF locations.			3000	TASKY
2000				↑	
2000	358°			fr 358°	
	3 NM				
					RWY36
GP 3.00°	TCH 58				

CATEGORY	A	B	C	D
RNP 0.30 DA	1425-1		446 (500-1)	

AUTHORIZATION REQUIRED

NC-2, 16 APR 2026 to 14 MAY 2026

NC-2, 16 APR 2026 to 14 MAY 2026