

(TOLLZ2.TOLLZ) 25359

AL-305 (FAA)

ORLANDO EXEC (ORL)
ORLANDO, FLORIDA

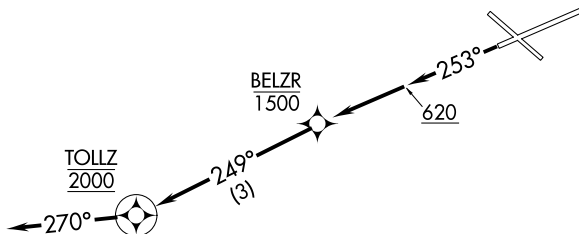
TOLLZ TWO DEPARTURE (RNAV)

ORLANDO DEP CON
119.4 351.9
ATIS
127.25
CLNC DEL
128.45
CLNC DEL
119.775 (When twr closed)
GND CON
121.4 239.0
EXECUTIVE TOWER ★
118.7 239.0

RNAV 1 - DME/DME/IRU or GPS required.

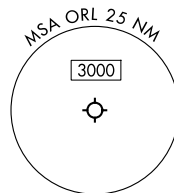
RADAR required.

TOP ALTITUDE:
2000



TAKEOFF MINIMUMS

Rwy 25: Standard with minimum climb of 500' per NM to 620.



NOTE: Chart not to scale.



DEPARTURE ROUTE DESCRIPTION

TAKEOFF RUNWAY 25: Climb on heading 253° to 620, then direct to cross BELZR at or below 1500, then on track 249° to cross TOLLZ at 2000, thence. . . .

. . . on heading 270°, maintain 2000. Expect clearance to filed altitude within 10 minutes after departure.

TOLLZ TWO DEPARTURE (RNAV)
(TOLLZ2.TOLLZ) 21MAR24

ORLANDO, FLORIDA
ORLANDO EXEC (ORL)

SE-3, 16 APR 2026 to 14 MAY 2026

SE-3, 16 APR 2026 to 14 MAY 2026