

WAAS CH 53630 RWY W13A	APP CRS 132°	Rwy Idg 5001 TDZE 13 Aprt Elev 14
--	------------------------	--

RNAV (GPS) RWY 13

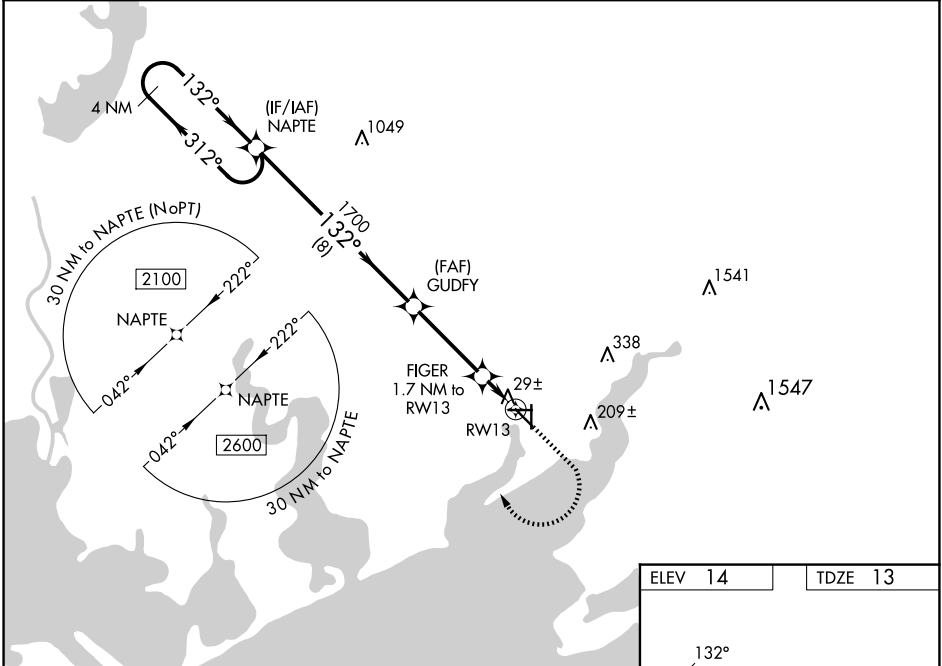
PALACIOS MUNI (PSX)

RNP APCH.

- ▼ For uncompensated Baro-VNAV systems, LNAV/VNAV NA below -20°C or above 54°C.
- ▲ When local altimeter setting not received, use Port Lavaca altimeter setting: Increase DA to 319 feet and visibility all Cats 1/2 SM; increase all MDA 60 feet and LNAV Cat C/D and Circling Cat C/D visibility 1/4 SM. Baro-VNAV and VDP NA when using Port Lavaca altimeter setting. Rwy 13 helicopter visibility reduction below 3/4 SM NA. Circling Rwy 8, 18, 26, 31, 36 NA at night.

MISSED APPROACH:
Climb to 500 then climbing right turn to 2100 direct NAPTE and hold.

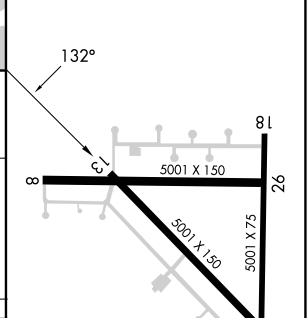
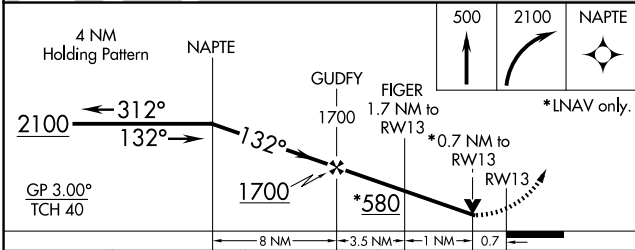
ASOS 118.025	HOUSTON CENTER 135.05 353.6	UNICOM 122.8 (CTAF)
------------------------	---------------------------------------	-------------------------------



SC-5, 16 APR 2026 to 14 MAY 2026

SC-5, 16 APR 2026 to 14 MAY 2026

ELEV 14	TDZE 13
----------------	----------------



CATEGORY	A	B	C	D
LPV DA		263-7/8	250 (300-7/8)	
LNAV/VNAV DA		263-7/8	250 (300-7/8)	
LNAV MDA	280-1	267 (300-1)	280-7/8	267 (300-7/8)
CIRCLING	460-1 446 (500-1)	480-1 466 (500-1)	560-1 1/2 546 (600-1 1/2)	700-2 1/4 686 (700-2 1/4)

REIL Rws 13 and 31
MIRL Rwy 13-31