

HI-ILS Y or LOC Y RWY 25

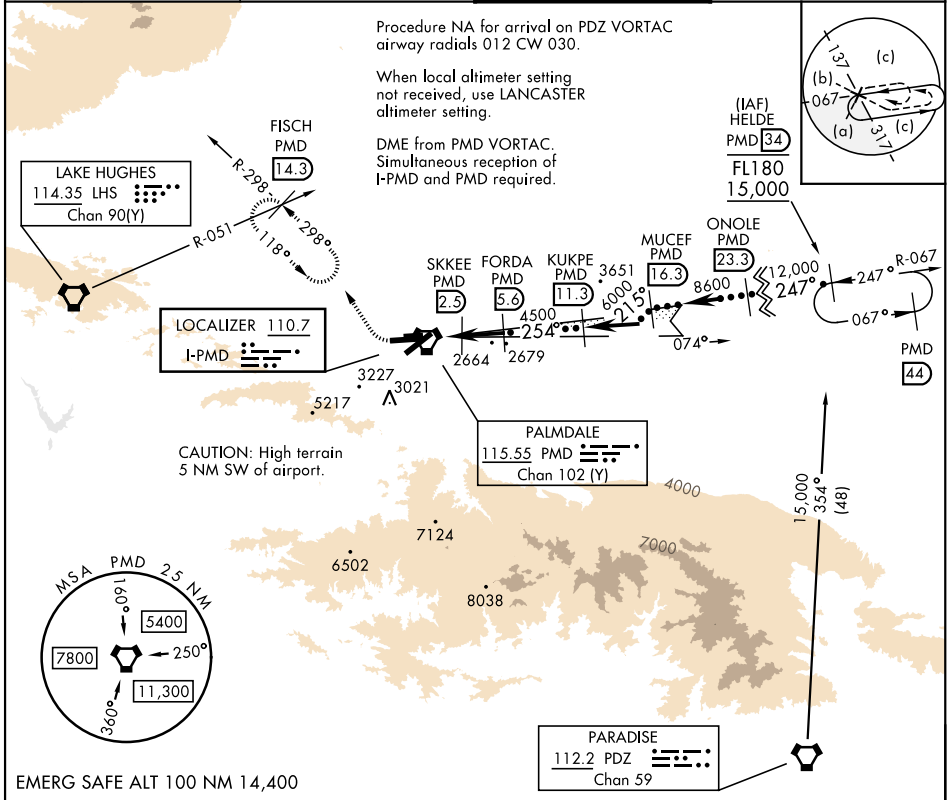
LOC I-PMD 110.7	APCH CRS 254°	Rwy Idg 12,002
		TDZE 2503
		Arprt Elev 2543

[USAF]

PALMDALE USAF PLANT 42 (KPMD)

DME required	MISSED APPROACH: Climb to 3000 then climbing right turn on heading 318° and PMD VORTAC R-298 to FISCH INT/PMD 14.3 DME/RADAR and hold, continue climb-in-hold to 6700.
--------------	--

ATIS 118.275	JOSHUA APP CON 124.55 363.0	TOWER* 123.7 (CTAF) 317.6	GND CON 121.9 317.6
------------------------	---------------------------------------	-------------------------------------	-------------------------------



SW-3, 16 APR 2026 to 14 MAY 2026

SW-3, 16 APR 2026 to 14 MAY 2026

3000	6700	PMD R-298	ELEV 2543	TDZE 2503
<p>VGSI and descent angles not coincident.</p>				
CATEGORY	C	D	E	
S-ILS 25	2703- $\frac{3}{4}$	200	(200- $\frac{3}{4}$)	
S-LOC 25	2820- $\frac{7}{8}$	317	(300- $\frac{7}{8}$)	
CIRCLING*	3140-1 $\frac{1}{2}$ 597 (600-1 $\frac{1}{2}$)	3740-3 1197 (1200-3)	3760-3 1217 (1300-3)	

HI-ILS Y or LOC Y RWY 25