

HI-TACAN Y RWY 25

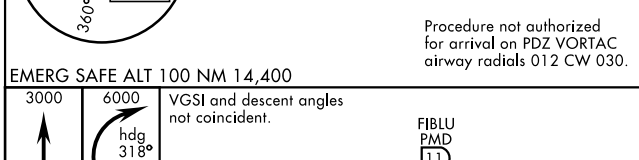
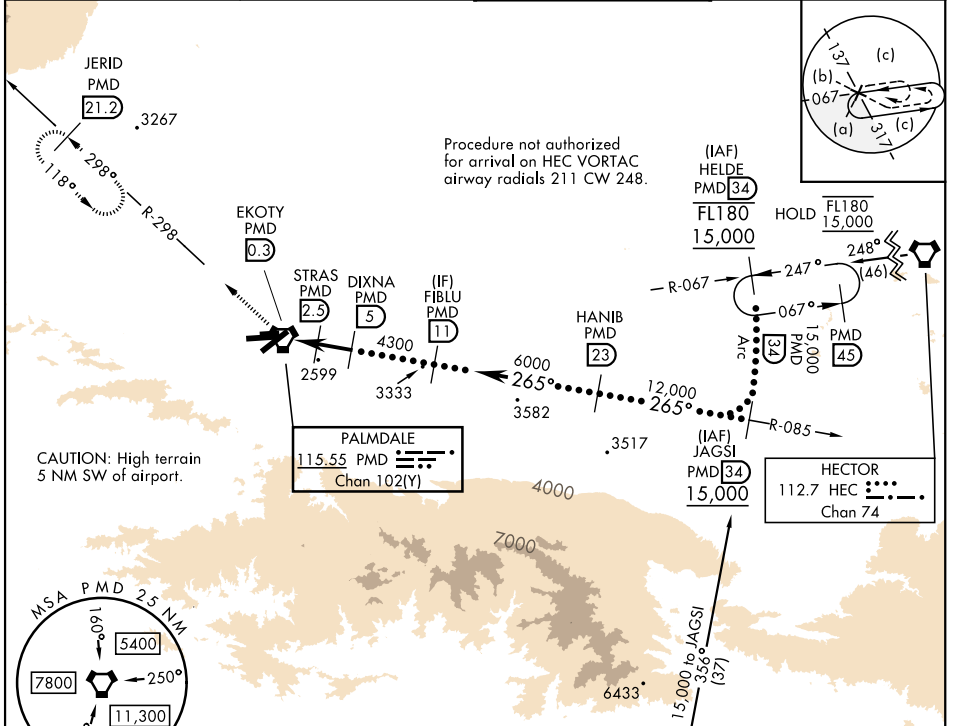
TACAN PMD Chan 102(Y)	APCH CRS 265°	Rwy Idg 12,002 TDZE 2503 Arprt Elev 2543
---------------------------------	-------------------------	---

[USAF]

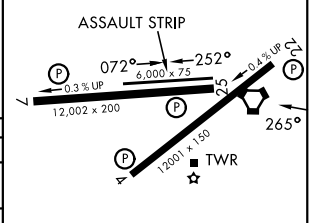
PALMDALE USAF PLANT 42 (KPMD)

∇ * Circling not authorized S of Rwy 4 and 25.
▲ MISSED APPROACH: Climb to 3000 then climbing right turn to 6000 on heading 318° and on PMD VORTAC R-298 to JERID INT/PMD 21.2 DME and hold.

ATIS 118.275	JOSHUA APP CON 124.55 363.0	TOWER★ 123.7 (CTAF) 317.6	GND CON 121.9 317.6
------------------------	---------------------------------------	-------------------------------------	-------------------------------



ELEV	2543	TDZE	2503
------	------	------	------



CATEGORY	C	D	E
S-25	2860-1	357 (400-1)	
CIRCLING*	3140-1½ 597 (600-1½)	3760-3 1217	(1300-3)

HIRL Rwy 4-22, 7-25

HI-TACAN Y RWY 25

SW-3, 16 APR 2026 to 14 MAY 2026

SW-3, 16 APR 2026 to 14 MAY 2026