

LOC I-PMD 110.7	APP CRS 254°	Rwy Ldg TDZE 12002 2503	Apt Elev 2543
---------------------------	------------------------	---------------------------------------	-------------------------

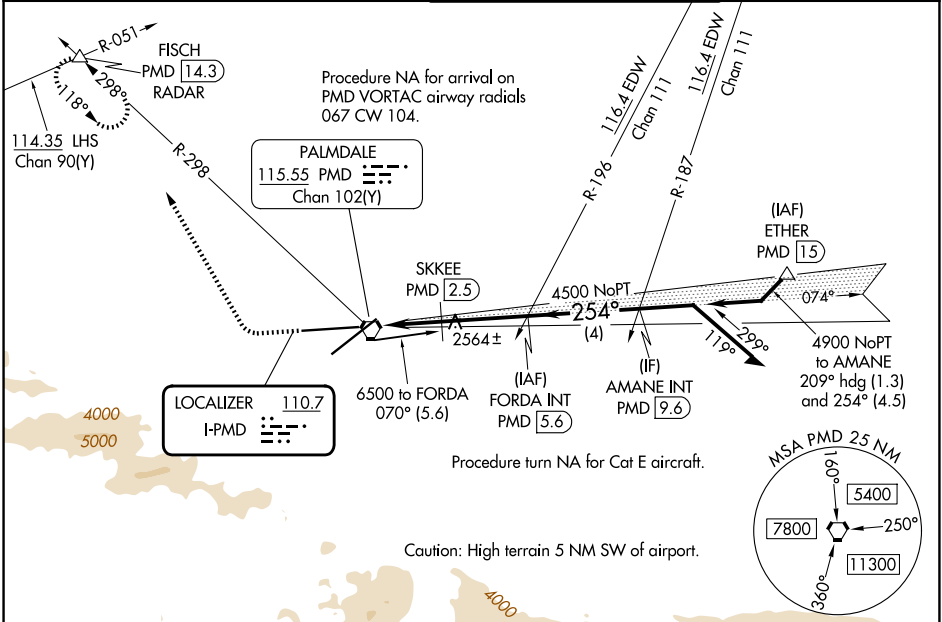
ILS Z or LOC Z RWY 25

PALMDALE USAF PLANT 42 (PMD)

⚠ Circling NA for Cats C, D, and E south of Rws 4 and 25. DME from PMD VORTAC. Simultaneous reception of I-PMD and PMD DME required.

⚠ MISSED APPROACH: Climb to 3000 then climbing right turn to 6700 on heading 318° and on PMD VORTAC R-298 to FISCH INT/PMD 14.3 DME/RADAR and hold, continue climb-in-hold to 6700.

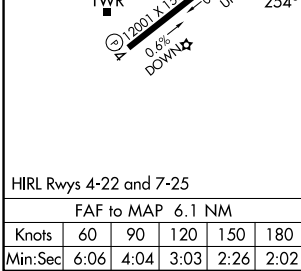
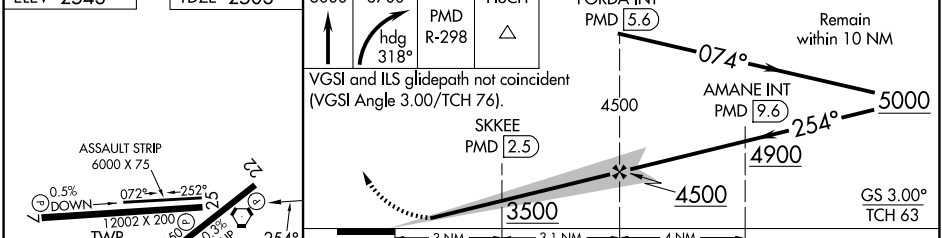
ATIS 118.275	JOSHUA APP CON 124.55 363.0	PALMDALE TOWER * 123.7 (CTAF) 0 317.6	GND CON 121.9 317.6
------------------------	---------------------------------------	---	-------------------------------



SW-3, 16 APR 2026 to 14 MAY 2026

SW-3, 16 APR 2026 to 14 MAY 2026

ELEV 2543	TDZE 2503	3000	6700	FISCH	FORDA INT PMD 5.6
-----------	-----------	------	------	-------	-------------------



CATEGORY	A	B	C	D	E
S-ILS 25	2703- ³ / ₄ 200 (200- ³ / ₄)				
S-LOC 25	3500-1 ¹ / ₄ 997 (1000-1 ¹ / ₄)	3500-1 ¹ / ₂ 997 (1000-1 ¹ / ₂)	3500-3	3740-3	3760-3
CIRCLING	3500-1 ¹ / ₄ 957 (1000-1 ¹ / ₄)	3500-1 ¹ / ₂ 957 (1000-1 ¹ / ₂)	3500-3 957 (1000-3)	3740-3 1197 (1200-3)	3760-3 217 (1300-3)
SKKEE FIX MINIMUMS (DME REQUIRED)					
S-LOC 25	2820-1	317 (300-1)	2820- ⁷ / ₈	317 (300- ⁷ / ₈)	
CIRCLING	3020-1 477 (500-1)	3060-1 517 (600-1)	3140-1 ¹ / ₂ 597 (600-1 ¹ / ₂)	3740-3 1197 (1200-3)	3760-3 217 (1300-3)

PALMDALE, CALIFORNIA
Amdt 10A 12JUN25

34°38'N-118°05'W

ILS Z or LOC Z RWY 25