

25219

SWABY ONE (OBSTACLE) DEPARTURE (SWABY) (SWABY) [USN] PATUXENT RIVER NAS (TRAPNELL FIELD) (KNHK)

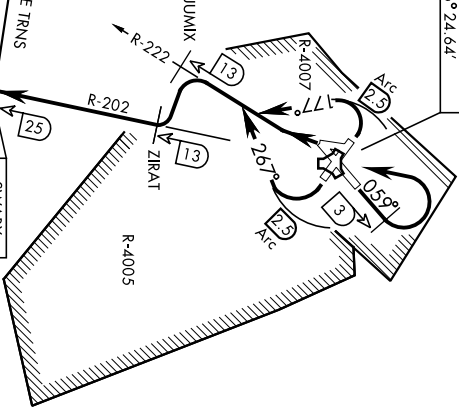
TACAN required

Rwy	Knobs	60	120	180	240	300	360
24	V/V(fpm)	214	428	642	856	1070	1284

Minimum climb rate to 500

ATIS 322.425
 CINCL DEL 135.2, 316, 125
 GND CON 120.6, 336.4
 TOWER 123.7, 343.65
 APP/DEP CON ★ 121.0, 250.3

NAS PATUXENT RIVER
 Chan 39 (Y) NHK
 N38° 16.86'
 W76° 24.64'



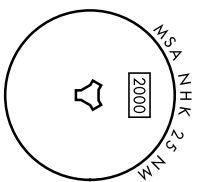
GORDONSVILLE
 115.6 GVE
 Chan 103
 N38°00.82'
 W78°09.18'

HOREWELL
 114.35 HPW
 Chan 90 (Y)
 N37°19.73'
 W77°06.96'

HARCUM
 108.8 HCM
 Chan 25
 N37°26.97'
 W76°42.66'

SWABY
 9000
 N37°52.38'
 W76°31.20'

CAPE CHARLES
 112.2 CCV
 Chan 59
 N37°20.85'
 W75°59.86'



Departure Rwy 2-20 not authorized.
 Minimum filing dh 10,000.

NE-3, 16 APR 2026 to 14 MAY 2026

NE-3, 16 APR 2026 to 14 MAY 2026

Note: Chart not to scale

(CONTINUED ON FOLLOWING PAGE)

**ATC BRIEF
 REQUIRED**
135.2 316.125

SWABY ONE (OBSTACLE) DEPARTURE (SWABY) (SWABY)
 PATUXENT RIVER, MARYLAND
 PATUXENT RIVER NAS (TRAPNELL FIELD) (KNHK)
 Amend 1 07AUG25

▼ DEPARTURE ROUTE DESCRIPTION

TAKEOFF RWY 6: Climb heading 059°, at NHK TACAN 3 DME turn left direct NHK thence...

TAKEOFF RWY 14: Climbing right turn heading 267° within NHK TACAN 2.5 DME to intercept NHK R-222, thence...

TAKEOFF RWY 24: Climbing left turn to intercept NHK TACAN R-222, thence...

TAKEOFF RWY 32: Climbing left turn heading 177°, to intercept NHK TACAN R-222, thence...

...then on NHK R-222 to JUMIX. Climbing left turn to intercept 1.3 DME arc to ZIRAT, then turn right on R-202 to SWABY. Then on assigned transition or expect radar vectors.

GORDONSVILLE TRANSITION (SWABY1.GVE): Cross SWABY at or above 9,000, then on GVE VORTAC R-102 to GVE.

HARCUM TRANSITION (SWABY1.HCM): Cross SWABY at or above 9,000, then on HCM VORTAC R-027 to HCM.

HOPEWELL TRANSITION (SWABY1.HPW): Cross SWABY at or above 9,000, then on HPW VORTAC R-047 to HPW.

STEIN TRANSITION (SWABY1.STEIN): Cross SWABY at or above 9,000, then on NHK R-202 to UNNAC, then on CCV VORTAC R-323 to STEIN.