

PATUXENT RIVER, MARYLAND

TACAN Z RWY 6

TACAN NHK Chan 39 (Y)	APCH CRS 067°	Rwy ldg TDZE Arprt Elev	11,799 39 39
-----------------------	---------------	-------------------------	--------------------

(USN)

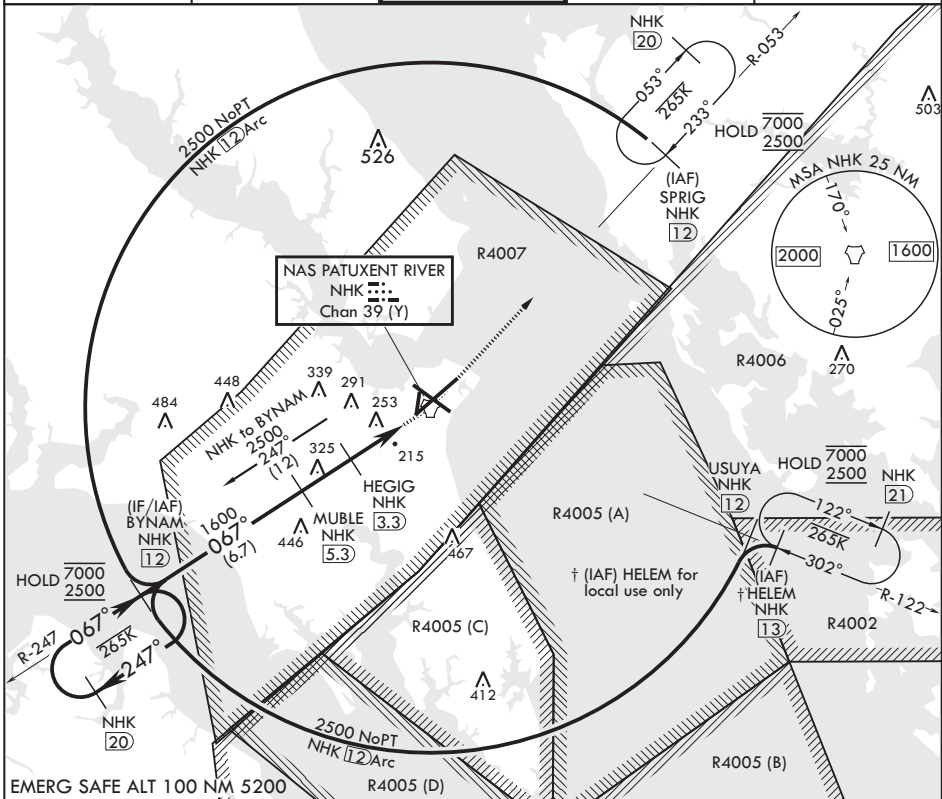
PATUXENT RIVER NAS (TRAPNELL FLD) (KNHK)

▼ * When ALS inop, increase CAT AB vis to 1 mile, CAT CDE vis to 1 3/8 miles.

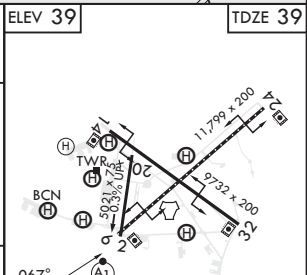
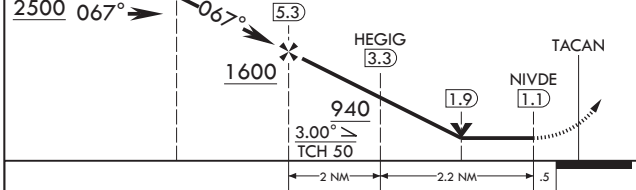


MISSED APPROACH: Climb to 2500 direct NHK TACAN and intercept NHK R-053 to SPRIG and hold.

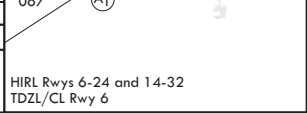
ATIS 322.425	APP CON/DEP CON* 121.0 250.3	TOWER 123.7 343.65	GND CON 120.6 336.4	CLNC DEL 135.2 316.125
--------------	------------------------------	--------------------	---------------------	------------------------



EMERG SAFE ALT 100 NM 5200	R4005 (D)	R4005 (B)	R4005 (C)	R4005 (A)	USUYA NHK 12	HOLD 7000 2500 NHK 21	122°	265K	302°	R-122	R4002
----------------------------	-----------	-----------	-----------	-----------	--------------	-----------------------	------	------	------	-------	-------



CATEGORY	A	B	C	D	E
S-6*	520-1/2 481 (500-1/2)		520-1 481 (500-1)		
CIRCLING	520-1 481 (500-1)	560-1 521 (600-1)	620-1 1/2 581 (600-1 1/2)	700-2 661 (700-2)	820-2 3/4 781 (800-2 3/4)



PATUXENT RIVER, MARYLAND

38°17'N - 76°25'W PATUXENT RIVER NAS (TRAPNELL FLD) (KNHK)

Amdt 1 07AUG25

TACAN Z RWY 6

NE-3, 16 APR 2026 to 14 MAY 2026

NE-3, 16 APR 2026 to 14 MAY 2026