


WAAS CH <b>78412</b> W26A	APP CRS <b>254°</b>	Rwy Ldg TDZE Apt Elev	<b>6301</b> <b>1487</b> <b>1497</b>
---------------------------------	------------------------	-----------------------------	---

# RNAV (GPS) RWY 26

EASTERN OREGON RGNL AT PENDLETON (PDT)

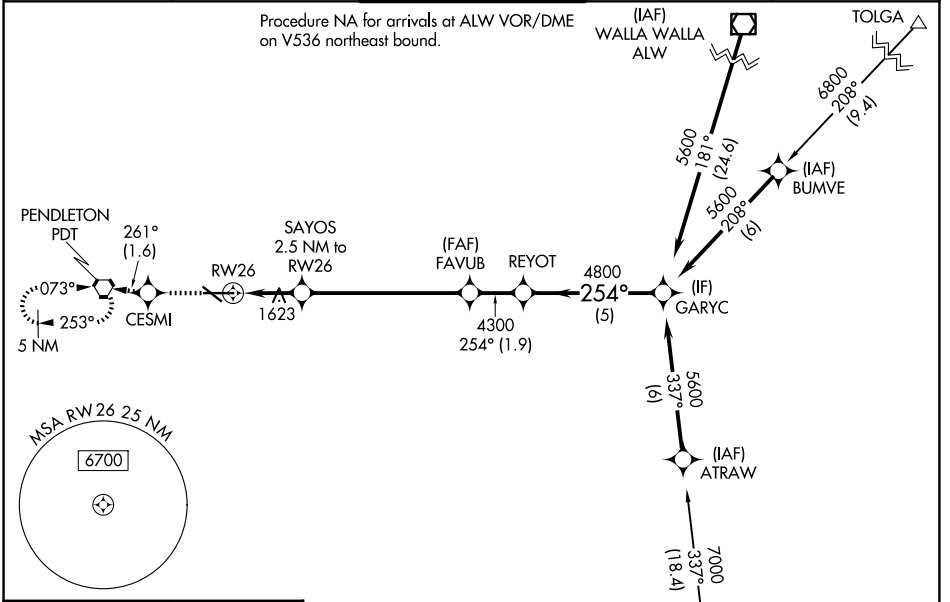
RNP APCH.

**⚠** Circling Rwy 11 NA at night. For uncompensated Baro-VNAV systems, LNAV/VNAV NA below -17°C or above 54°C. For inop ALS, increase LNAV/VNAV all Cats visibility to RVR 4500.  
#RVR 1800 authorized with the use of FD or AP or HUD to DA.

MALSR 

MISSED APPROACH: Climb to 4300 direct CESMI and on track 261° to PDT VORTAC and hold, continue climb-in-hold to 4300.

ASOS <b>118.325</b>	SPOKANE APP CON * <b>133.15 379.15</b>	PENDLETON TOWER * <b>119.7 (CTAF) 257.8</b>	GND CON <b>121.9 257.8</b>	UNICOM <b>122.95</b>
------------------------	---	--	-------------------------------	-------------------------

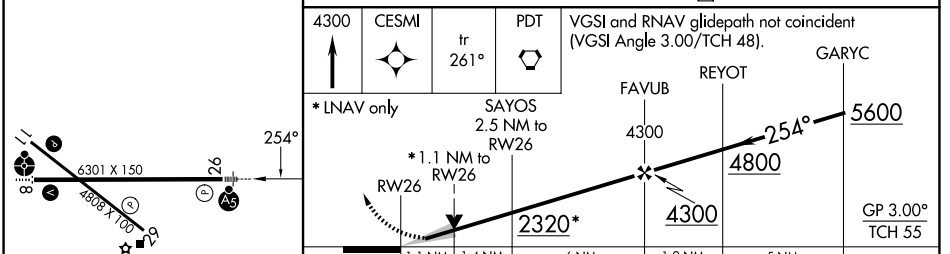


NW-1, 16 APR 2026 to 14 MAY 2026

NW-1, 16 APR 2026 to 14 MAY 2026

ELEV <b>1497</b>	<b>D</b>	TDZE <b>1487</b>
------------------	----------	------------------

Procedure NA for arrivals at LACED on V4 southeast bound.



	A	B	C	D
CATEGORY	A	B	C	D
LPV DA#		1687/24	200 (200-½)	
LNAV/VNAV DA		1800/24	313 (400-½)	
LNAV MDA	1880/24	393 (400-½)	1880/40	393 (400-¾)
CIRCLING	1920-1 423 (500-1)	1960-1 463 (500-1)	1980-1½ 483 (500-1½)	2200-2¼ 703 (800-2¼)