

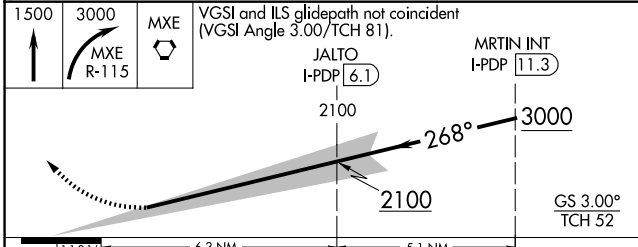
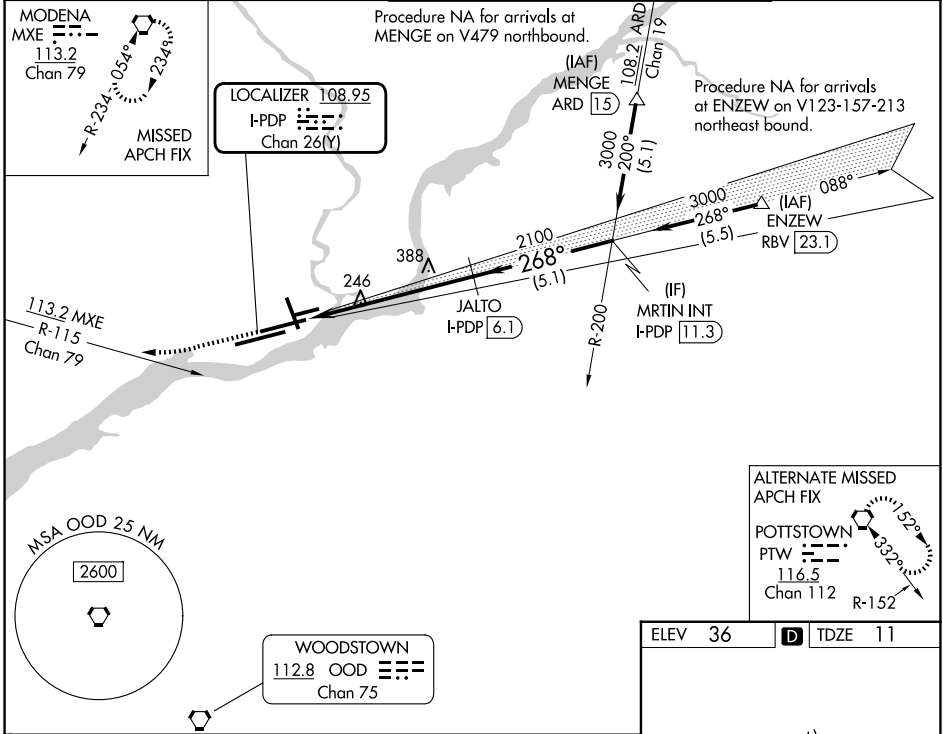
ILS RWY 27R (SA CAT I & II)

PHILADELPHIA INTL (PHL)

LOC/DME I-PDP 108.95 Chan 26 (Y)	APP CRS 268°	Rwy Ldg 8864 TDZE 11 Apt Elev 36
---	------------------------	---

DME required.	MALSR	MISSED APPROACH: Climb to 1500 then climbing right turn to 3000 on MXE VORTAC R-115 to MXE VORTAC and hold.
▼ SA CAT I: Requires specific OPSPEC, MSPEC or LOA approval and use of HUD to DH. SA CAT II: Reduced lighting: requires specific OPSPEC, MSPEC or LOA approval and use of autoland or HUD to touchdown.		

D-ATIS 133.4	PHILADELPHIA APP CON 124.35 319.15	PHILADELPHIA TOWER 118.5 327.05 (08/26, 09L/27R, 17/35) 135.1 327.05 (09R/27L)	GND CON 121.9 348.6
------------------------	--	--	-------------------------------



CATEGORY	A	B	C	D
S-ILS 27R	SA CAT I RA 157/14 150 DA 161			
S-ILS 27R	SA CAT II RA 102/12 100 DA 111			

ELEV 36 TDZE 11

ALTERNATE MISSED APCH FIX

POTTSTOWN PTW 116.5 Chan 112

TWR

0.5% UP

5001 X 150

2500 X 150

12000 X 200

35

36

37

38

39

40

41

42

43

44

45

46

47

48

49

50

51

52

53

54

55

56

57

58

59

60

61

62

63

64

65

66

67

68

69

70

71

72

73

74

75

76

77

78

79

80

81

82

83

84

85

86

87

88

89

90

91

92

93

94

95

96

97

98

99

100

SA CATEGORY I & II ILS - SPECIAL AIRCREW & AIRCRAFT CERTIFICATION REQUIRED

NE-4, 16 APR 2026 to 14 MAY 2026

NE-4, 16 APR 2026 to 14 MAY 2026