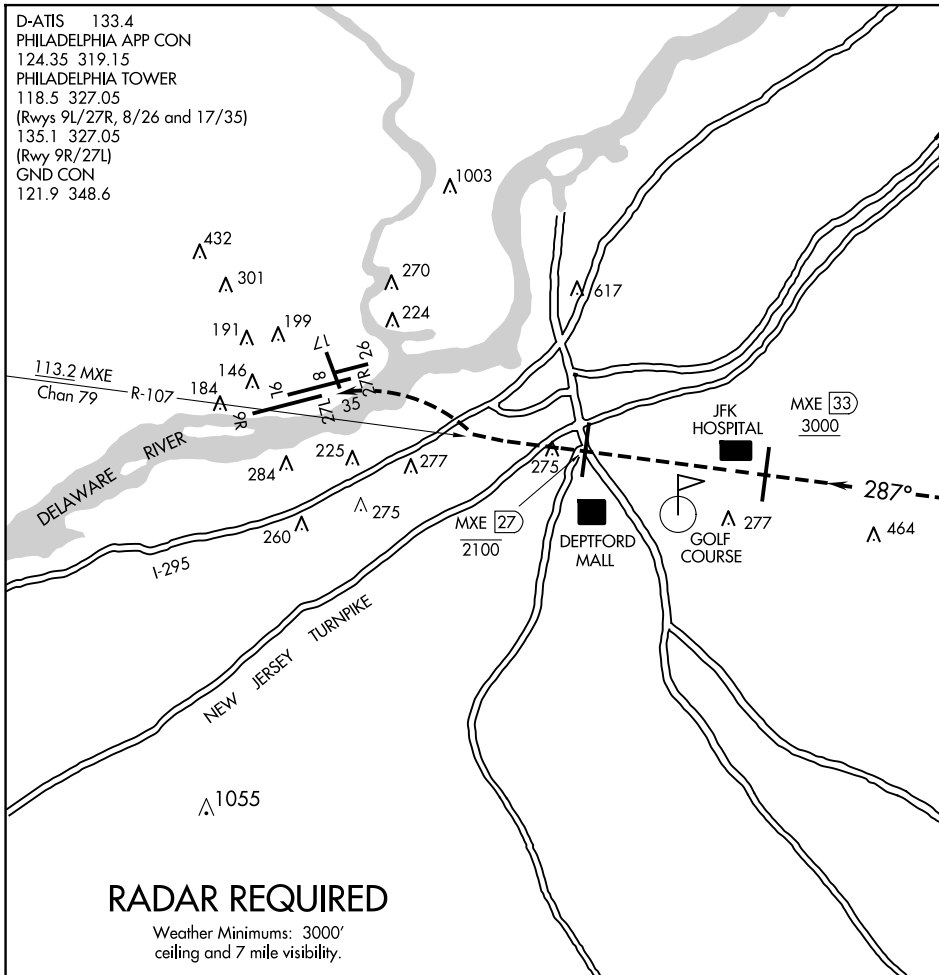


LIBERTY VISUAL RWY 27L

AL-320 (FAA)

PHILADELPHIA INTL (PHL)
PHILADELPHIA, PENNSYLVANIA

D-ATIS 133.4
 PHILADELPHIA APP CON
 124.35 319.15
 PHILADELPHIA TOWER
 118.5 327.05
 (Rwys 9L/27R, 8/26 and 17/35)
 135.1 327.05
 (Rwy 9R/27L)
 GND CON
 121.9 348.6



NE-4, 16 APR 2026 to 14 MAY 2026

NE-4, 16 APR 2026 to 14 MAY 2026

1	2	3	4	5	6	7	8	9	10	11	12	13	14	15	16	17	18	19	20	21	22	23
---	---	---	---	---	---	---	---	---	----	----	----	----	----	----	----	----	----	----	----	----	----	----

LIBERTY VISUAL RWY 27L

Expect RADAR vectors to the MXE R-107.
 Proceed Northwest on the MXE R-107 inbound for Rwy 27L.
 Report the airport in sight to final controller.
 Aircraft must remain on the MXE R-107 until the MXE R-107/27 DME;
 then proceed visually to Rwy 27L or as assigned by the tower.
 Expect aircraft to be utilizing a simultaneous visual or ILS approach
 to Rwy 27R during this operation.

LIBERTY VISUAL RWY 27L

39°52'N-75°14'W

PHILADELPHIA, PENNSYLVANIA
PHILADELPHIA INTL (PHL)