

PAATS FOUR ARRIVAL (RNAV) Transition Routes

PHILADELPHIA, PENNSYLVANIA

PHILADELPHIA APP CON
133.875 317.55
MQS AWOS-3 126.25
PHL D-ATIS ARR 133.4
PNE ATIS 121.15
TTN ATIS 126.775

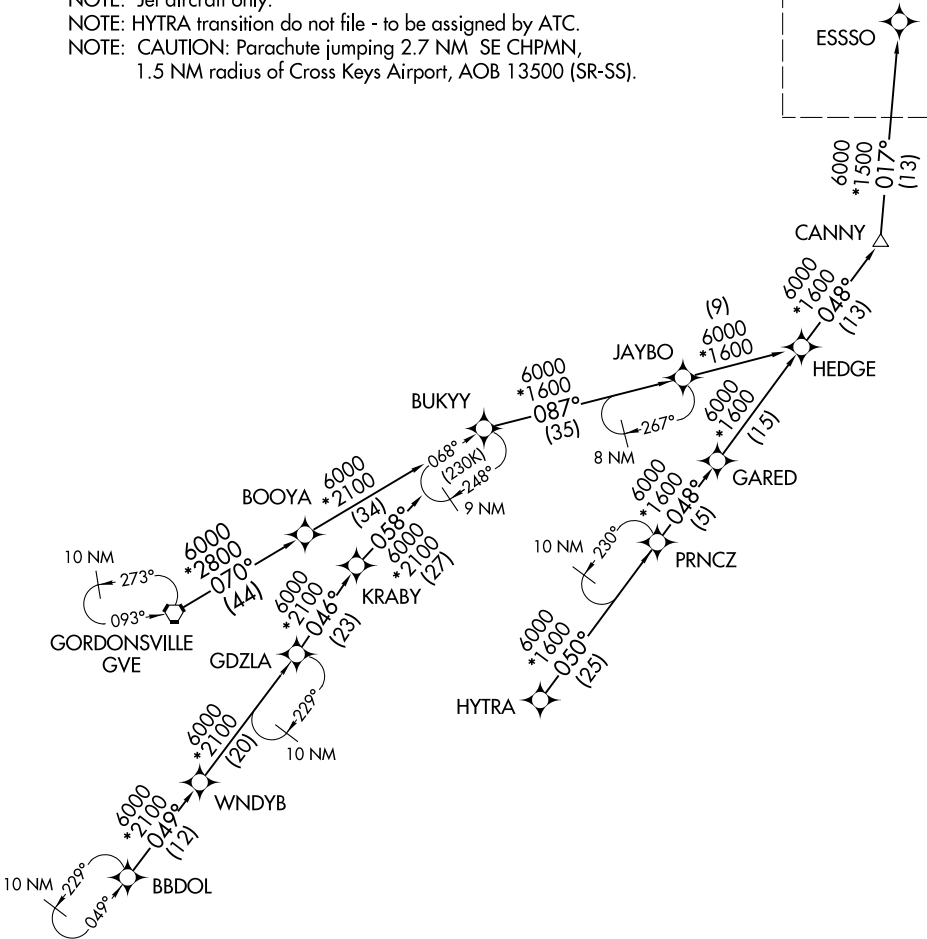
RNAV 1 - DME/DME/IRU or GPS

RADAR required

BBDOL TRANSITION (BBDOL.PAATS4):
GORDONSVILLE TRANSITION (GVE.PAATS4):
HYTRA TRANSITION (HYTRA.PAATS4):

- NOTE: Jet aircraft only.
- NOTE: HYTRA transition do not file - to be assigned by ATC.
- NOTE: CAUTION: Parachute jumping 2.7 NM SE CHPMN, 1.5 NM radius of Cross Keys Airport, AOB 13500 (SR-SS).

See following page for Arrival Routes.



NE-4, 16 APR 2026 to 14 MAY 2026

NE-4, 16 APR 2026 to 14 MAY 2026

NOTE: Chart not to scale.

(CONTINUED ON FOLLOWING PAGE)

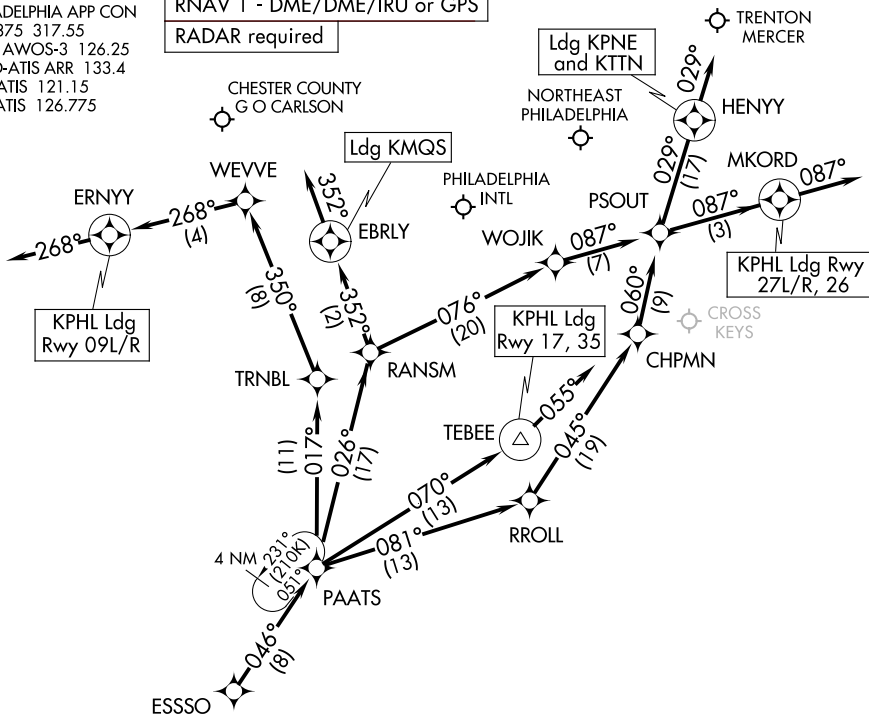
PAATS FOUR ARRIVAL (RNAV) Arrival Routes

PHILADELPHIA, PENNSYLVANIA

PHILADELPHIA APP CON
 133.875 317.55
 MQS AWOS-3 126.25
 PHL D-ATIS ARR 133.4
 PNE ATIS 121.15
 TTN ATIS 126.775

RNAV 1 - DME/DME/IRU or GPS

RADAR required



NOTE: Jet aircraft only.

NOTE: HYTRA transition do not file - to be assigned by ATC.

NOTE: CAUTION: Parachute jumping 2.7 NM SE CHPMN, 1.5 NM radius of Cross Keys Airport, AOB 13500 (SR-SS).

NOTE: Chart not to scale.

ARRIVAL ROUTE DESCRIPTION

KPHL: From ESSSO on track 046° to PAATS.

Landing PHL Rwy 9L/R: From PAATS on track 017° to TRNBL, then on track 350° to WEVVE, then on track 268° to ERNYY, then on track 268°. Expect RADAR vectors to final approach course.

Landing PHL Rwy 17, 35: From PAATS on track 070° to TEBEE, then on track 055°. Expect RADAR vectors to final approach course.

Landing PHL Rwy 26, 27L/R: From PAATS on track 081° to RROLL, then on track 045° to CHPMN, then on track 060° to PSOUT, then on track 087° to MKORD, then on track 087°. Expect RADAR vectors to final approach course.

Landing MQS: From ESSSO on track 046° to PAATS, then on track 026° to RANSM, then on track 352° to EBRLY, then on track 076°. Expect RADAR vectors to final approach course.

Landing TTN/KPNE: From ESSSO on track 046° to PAATS, then on track 026° to RANSM, then on track 076° to WOJIK, then on track 087° to PSOUT, then on track 029° to HENNY, then on track 029°. Expect RADAR vectors to final approach course.