

WAAS CH 99721 W35A	APP CRS 351°	Rwy Ldg TDZE Apt Elev	6500 13 36
--	------------------------	-----------------------------	---------------------------------------

RNAV (GPS) RWY 35

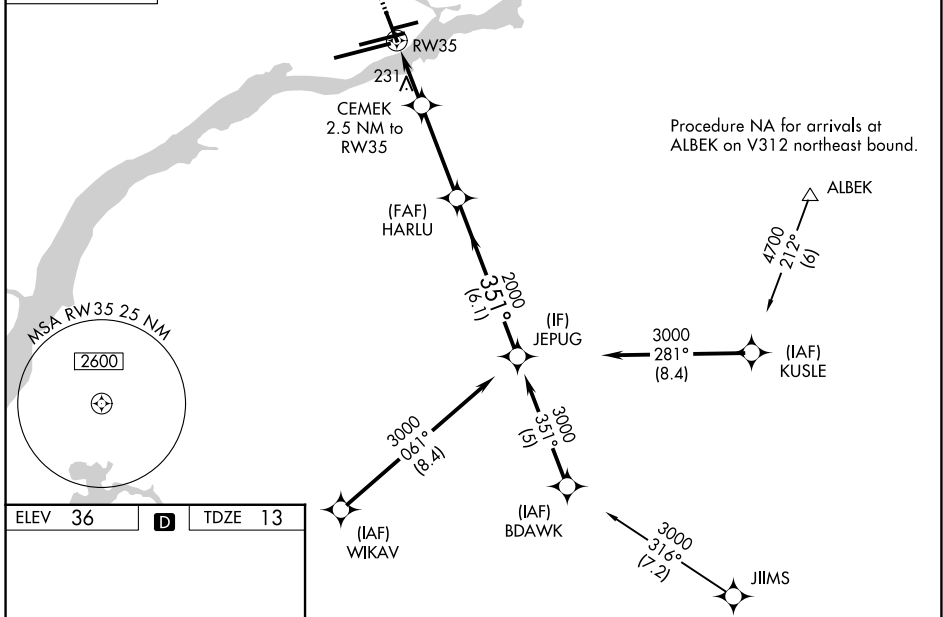
PHILADELPHIA INTL (PHL)

RNP APCH - GPS.

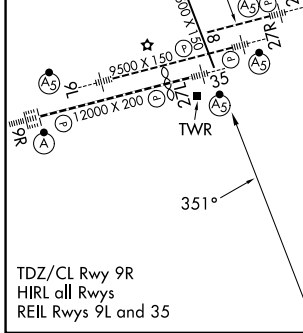
⚠ Rwy 35 helicopter visibility reduction below RVR 4000 NA.

MISSED APPROACH: Climb to 3000 direct WERDI and on track 333° to MUDNE and hold.

D-ATIS 133.4	PHILADELPHIA APP CON 124.35 319.15	PHILADELPHIA TOWER 118.5 327.05 (08/26, 09L/27R, 17/35) 135.1 327.05 (09R/27L)	GND CON 121.9 348.6
------------------------	--	--	-------------------------------



ELEV 36	D	TDZE 13
---------	----------	---------



	3000	WERDI	tr 333°	MUDNE			
							JEPUG
							3000
							351°
							2000
							900
							3.14°
							TCH 55
							HARLU
							3000
							6.1 NM
							3.6 NM
							1.2 NM
							1.3 NM
							RW35
							2.5 NM to RW35
							1.3 NM to RW35
							CEMEK
							2.5 NM to RW35
							1.3 NM to RW35
							RW35
							HARLU
							JEPUG
							3000
							351°
							2000
							900
							3.14°
							TCH 55
							HARLU
							3000
							6.1 NM
							3.6 NM
							1.2 NM
							1.3 NM
							RW35
							2.5 NM to RW35
							1.3 NM to RW35
							CEMEK
							2.5 NM to RW35
							1.3 NM to RW35
							RW35
							HARLU
							JEPUG
							3000
							351°
							2000
							900
							3.14°
							TCH 55
							HARLU
							3000
							6.1 NM
							3.6 NM
							1.2 NM
							1.3 NM
							RW35
							2.5 NM to RW35
							1.3 NM to RW35
							CEMEK
							2.5 NM to RW35
							1.3 NM to RW35
							RW35
							HARLU
							JEPUG
							3000
							351°
							2000
							900
							3.14°
							TCH 55
							HARLU
							3000
							6.1 NM
							3.6 NM
							1.2 NM
							1.3 NM
							RW35
							2.5 NM to RW35
							1.3 NM to RW35
							CEMEK
							2.5 NM to RW35
							1.3 NM to RW35
							RW35
							HARLU
							JEPUG
							3000
							351°
							2000
							900
							3.14°
							TCH 55
							HARLU
							3000
							6.1 NM
							3.6 NM
							1.2 NM
							1.3 NM
							RW35
							2.5 NM to RW35
							1.3 NM to RW35
							CEMEK
							2.5 NM to RW35
							1.3 NM to RW35
							RW35
							HARLU
							JEPUG
							3000
							351°
							2000
							900
							3.14°
							TCH 55
							HARLU
							3000
							6.1 NM
							3.6 NM
							1.2 NM
							1.3 NM
							RW35
							2.5 NM to RW35
							1.3 NM to RW35
							CEMEK
							2.5 NM to RW35
							1.3 NM to RW35
							RW35
							HARLU
							JEPUG
							3000
							351°
							2000
							900
							3.14°
							TCH 55
							HARLU
							3000
							6.1 NM
							3.6 NM
							1.2 NM
							1.3 NM
							RW35
							2.5 NM to RW35
							1.3 NM to RW35
							CEMEK
							2.5 NM to RW35
							1.3 NM to RW35
							RW35
							HARLU
							JEPUG
							3000
							351°
							2000
							900
							3.14°
							TCH 55
							HARLU
							3000
							6.1 NM
							3.6 NM
							1.2 NM
							1.3 NM
							RW35
							2.5 NM to RW35
							1.3 NM to RW35
							CEMEK
							2.5 NM to RW35
							1.3 NM to RW35
							RW35
							HARLU
							JEPUG
							3000
							351°
							2000
							900
							3.14°
							TCH 55
							HARLU
							3000
							6.1 NM
							3.6 NM
							1.2 NM
							1.3 NM
							RW35
							2.5 NM to RW35
							1.3 NM to RW35
							CEMEK
							2.5 NM to RW35
							1.3 NM to RW35
							RW35
							HARLU
							JEPUG
							3000
							351°
							2000
							900
							3.14°
							TCH 55
							HARLU
							3000
							6.1 NM
							3.6 NM
							1.2 NM
							1.3 NM
							RW35
							2.5 NM to RW35
							1.3 NM to RW35
							CEMEK
							2.5 NM to RW35
							1.3 NM to RW35
							RW35
							HARLU
							JEPUG
							3000
							351°</