

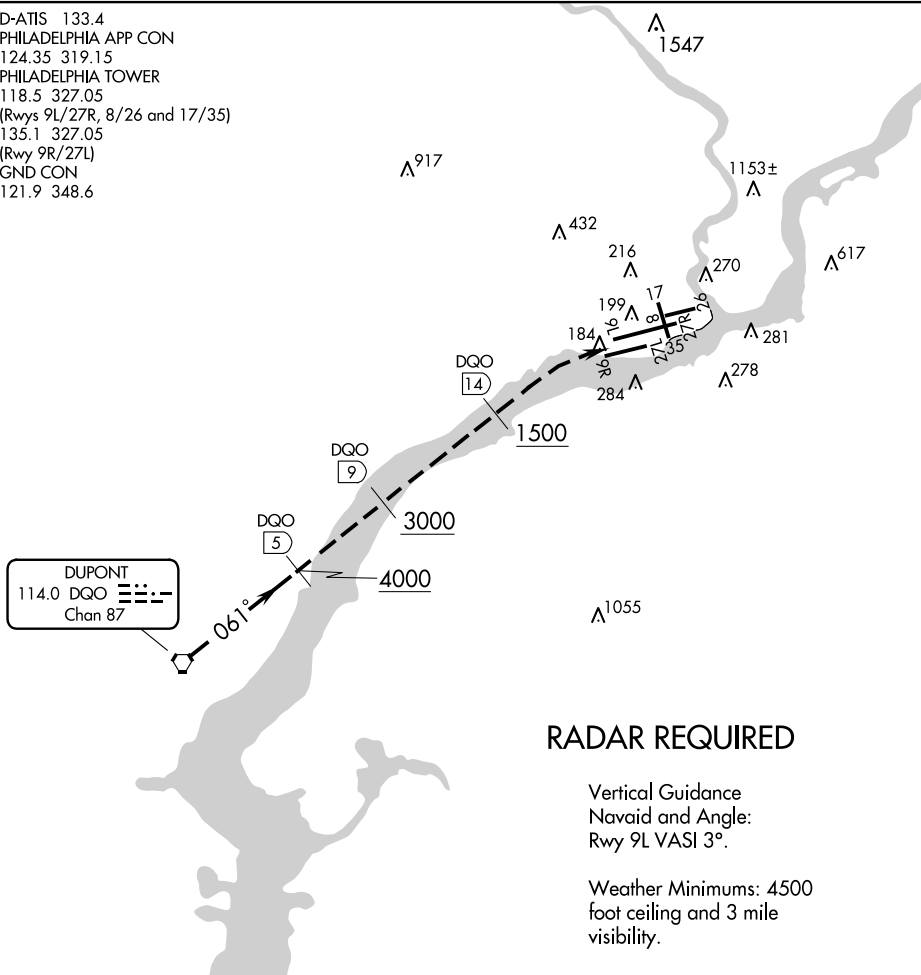
25275

RIVER VISUAL RWY 9L/R

AL-320 (FAA)

PHILADELPHIA INTL (PHL)
PHILADELPHIA, PENNSYLVANIA

D-ATIS 133.4
 PHILADELPHIA APP CON
 124.35 319.15
 PHILADELPHIA TOWER
 118.5 327.05
 (Rwys 9L/27R, 8/26 and 17/35)
 135.1 327.05
 (Rwy 9R/27L)
 GND CON
 121.9 348.6



NE-4, 16 APR 2026 to 14 MAY 2026

NE-4, 16 APR 2026 to 14 MAY 2026

1	2	3	4	5	6	7	8	9	10	11	12	13	14	15	16	17	18	19	20	21	22	23	24	25	26	27	28	29	30	31	32
---	---	---	---	---	---	---	---	---	----	----	----	----	----	----	----	----	----	----	----	----	----	----	----	----	----	----	----	----	----	----	----

RIVER VISUAL RWY 9L/R

Expect RADAR vectors to the DGO R-061.
 Aircraft may proceed to the DGO R-061/5.0 DME, then descend
 from 4000 feet over the Delaware River and follow the river to
 the airport.

RIVER VISUAL RWY 9L/R

39°52'N-75°14'W

PHILADELPHIA, PENNSYLVANIA
PHILADELPHIA INTL (PHL)

Orig 05MAR92