

LUKE-ONE DEPARTURE (LUKE1.DRK)

[USAF]

GLENDALE, ARIZONA

ATIS ★ 134.925 269.85
 CLNC DEL ★
 126.25 273.475
 GND CON ★
 133.175 335.8
 TOWER ★
 119.1 379.9
 DEP CON ★
 118.15 363.125

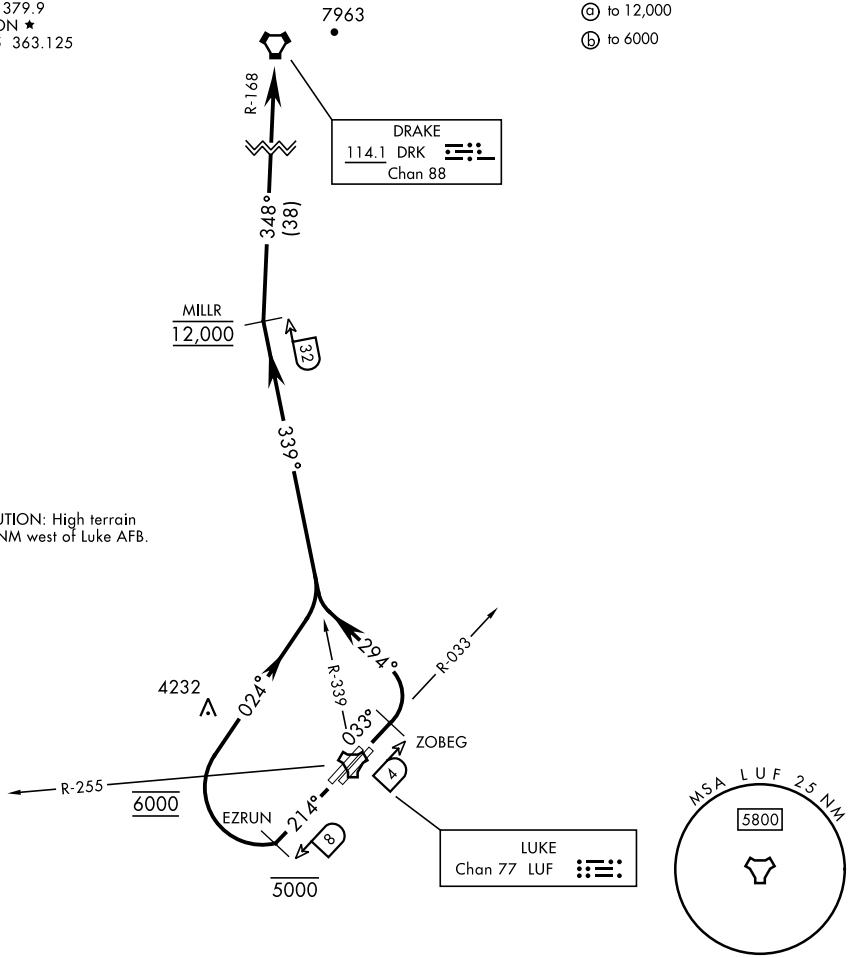
RADAR required

Rwy	Knots	60	120	180	240	300	360
†3 L/R (a)	V/V(fpm)	336	672	1008	1344	1680	2016
*21 L/R (b)	V/V(fpm)	480	960	1440	1920	2400	2880

* Minimum † ATC Climb Rate

(a) to 12,000

(b) to 6000



CAUTION: High terrain
10 NM west of Luke AFB.

DEPARTURE ROUTE DESCRIPTION

TAKEOFF RWY 3 L/R: Climb heading 033° to 12,000. Abeam ZOBEG turn left heading 294° to intercept and proceed via LUF TACAN R-339 outbound to MILLR then via DRK VORTAC R-168 to DRK. Cross MILLR at 12,000 or as assigned by ATC.

TAKEOFF RWY 21 L/R: Climb heading 214° to 5000. Abeam EZRUN turn right heading 024° to intercept and proceed via LUF TACAN R-339 outbound to MILLR then via DRK VORTAC R-168 to DRK. Cross EZRUN at or below 5000. Cross LUF R-255 at 6000. Climb and maintain 12,000 until MILLR or as assigned by ATC.

LUKE-ONE DEPARTURE (LUKE1.DRK)

GLENDALE, ARIZONA

LUKE AFB (KLUF)

Amdt 2 25JAN24

SW-4, 16 APR 2026 to 14 MAY 2026

SW-4, 16 APR 2026 to 14 MAY 2026