

NORDY-ONE DEPARTURE (NORDY1.NORDY)

[USAF]

LUKE AFB (KLUF)

GLENDALE, ARIZONA

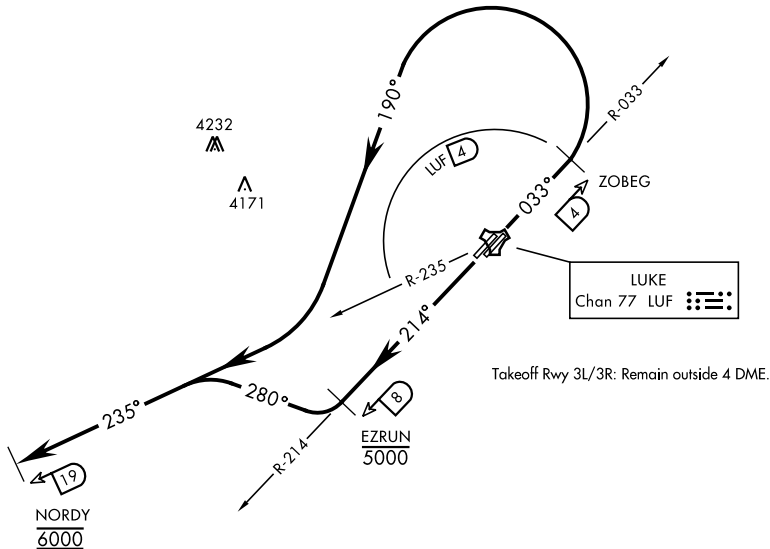
ATIS ★ 134.925 269.85
 CLNC DEL ★
 126.25 273.475
 GND CON ★
 133.175 335.8
 TOWER ★
 119.1 379.9
 DEP CON ★
 118.15 363.125

RADAR required

Rwy	Knots	60	120	180	240	300	360
3L/R (C)	V/V(fpm)	370	740	1110	1480	1850	2220
21L/R (B)	V/V(fpm)	280	560	840	1120	1400	1680

Minimum Climb Rate

- (C) Climb to 6000
- (B) Climb to 5000



SW-4, 16 APR 2026 to 14 MAY 2026

SW-4, 16 APR 2026 to 14 MAY 2026

DEPARTURE ROUTE DESCRIPTION

TAKEOFF RWY 3L/R: Climb on heading 033° to 6000. Abeam ZOBEG turn left heading 190° to intercept LUF TACAN R-235 and proceed outbound to NORDY. Remain outside LUF 4 DME. Maintain 6000 until NORDY or as assigned by ATC.

TAKEOFF RWY 21L/R: Climb on heading 214° to 5000. Abeam EZRUN turn right heading 280° to intercept LUF TACAN R-235 and proceed outbound to NORDY. Climb and maintain 6000 until NORDY or as assigned by ATC.

NORDY-ONE DEPARTURE (NORDY1.NORDY)

Amdt 2 25JAN24

GLENDALE, ARIZONA

LUKE AFB (KLUF)