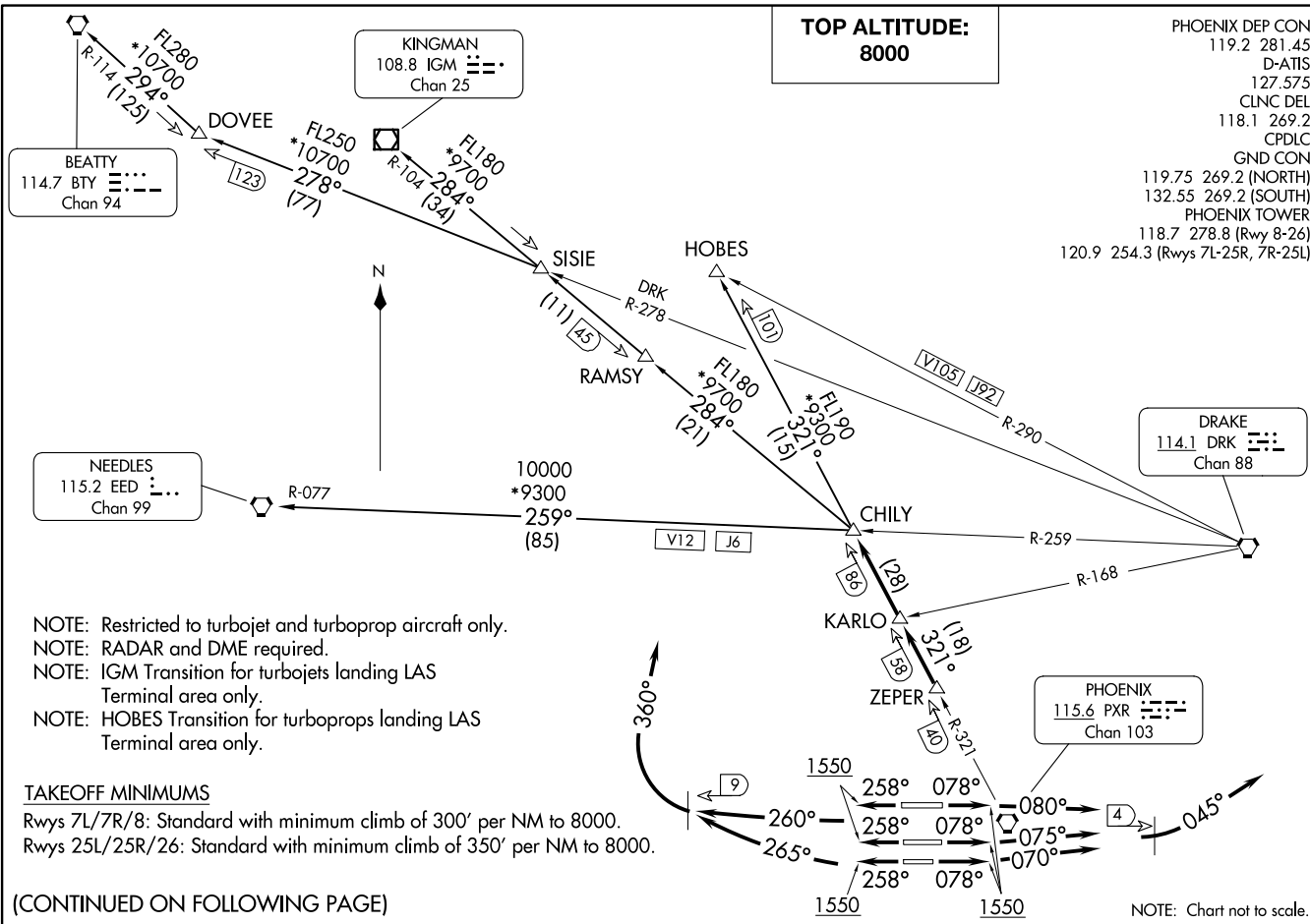


CHILY FOUR DEPARTURE
(CHILY4.CHILY) 25JUN15

(CHILY4.CHILY) 23334
CHILY FOUR DEPARTURE

AL-322 (FAA)

PHOENIX SKY HARBOR INTL (PHX)
PHOENIX, ARIZONA



PHOENIX DEP CON
 119.2 281.45
 D-ATIS
 127.575
 CLNC DEL
 118.1 269.2
 CPDLC
 GND CON
 119.75 269.2 (NORTH)
 132.55 269.2 (SOUTH)
 PHOENIX TOWER
 118.7 278.8 (Rwy 8-26)
 120.9 254.3 (Rwys 7L-25R, 7R-25L)

NOTE: Restricted to turbojet and turboprop aircraft only.
 NOTE: RADAR and DME required.
 NOTE: IGM Transition for turbojets landing LAS Terminal area only.
 NOTE: HOBES Transition for turboprops landing LAS Terminal area only.

TAKEOFF MINIMUMS

Rwys 7L/7R/8: Standard with minimum climb of 300' per NM to 8000.
 Rwys 25L/25R/26: Standard with minimum climb of 350' per NM to 8000.

(CONTINUED ON FOLLOWING PAGE)

PHOENIX, ARIZONA
PHOENIX SKY HARBOR INTL (PHX)



DEPARTURE ROUTE DESCRIPTION

TAKEOFF RUNWAY 8: Climb heading 078° to 1550, then climbing right turn heading 080°, at 4 DME east of PXR VORTAC, climbing left turn heading 045°. Thence

TAKEOFF RUNWAY 7L: Climb heading 078° to 1550, then climbing left turn heading 075°, at 4 DME east of PXR VORTAC, climbing left turn heading 045°. Thence

TAKEOFF RUNWAY 7R: Climb heading 078° to 1550, then climbing left turn heading 070°, at 4 DME east of PXR VORTAC, climbing left turn heading 045°. Thence

TAKEOFF RUNWAY 25L: Climb heading 258° to 1550, then climbing right turn heading 265°, at 9 DME west of PXR VORTAC, climbing right turn heading 360°. Thence

TAKEOFF RUNWAY 25R: Climb heading 258° to 1550, then climbing right turn heading 260°, at 9 DME west of PXR VORTAC, climbing right turn heading 360°. Thence

TAKEOFF RUNWAY 26: Climb heading 258° to 1550, then climbing right turn heading 260°, at 9 DME west of PXR VORTAC, climbing right turn heading 360°. Thence

. . . . maintain 8000, expect RADAR vectors to PXR R-321 to ZEPER/PXR 40 DME then CHILY INT. Thence via (transition). Expect filed altitude 3 minutes after departure.

LOST COMMUNICATIONS: Expect filed altitude 3 minutes after departure.

BEATTY TRANSITION (CHILY4.BTY): From over CHILY INT via IGM R-104 to SISIE INT, then via DRK R-278 to DOVEE INT, then via BTY R-114 to BTY VORTAC.

HOBES TRANSITION (CHILY4.HOBES): From over CHILY INT via PXR R-321 to HOBES INT.

KINGMAN TRANSITION (CHILY4.IGM): From over CHILY INT via IGM R-104 to IGM VOR/DME.

NEEDLES TRANSITION (CHILY4.EED): From over CHILY INT via DRK R-259 and EED R-077 to EED VORTAC.

SW-4, 16 APR 2026 to 14 MAY 2026

SW-4, 16 APR 2026 to 14 MAY 2026