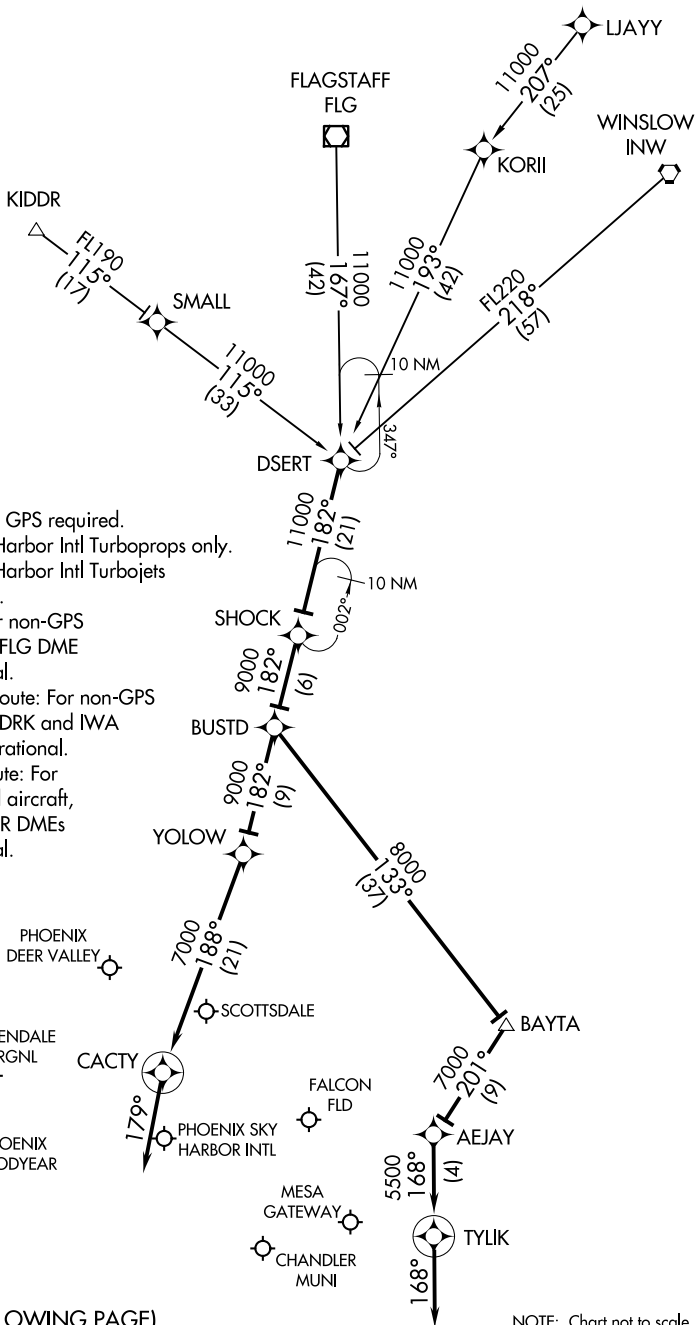


PHOENIX APP CON  
 120.7 239.0  
 CHD ATIS  
 128.325  
 DVT ATIS  
 126.5  
 FFZ ATIS  
 118.25  
 GEU ATIS  
 119.425  
 GYR ATIS  
 118.35  
 IWA ATIS  
 133.5 270.275  
 PHX D-ATIS  
 127.575  
 SDL ATIS  
 118.6  
 GATEWAY TOWER ★  
 120.6 289.4

- NOTE: RADAR required.
- NOTE: RNAV 1.
- NOTE: DME/DME/IRU or GPS required.
- NOTE: Landing PHX Sky Harbor Intl Turboprops only.
- NOTE: Landing PHX Sky Harbor Intl Turbojets ATC assigned only.
- NOTE: FLG Transition: For non-GPS equipped aircraft, FLG DME must be operational.
- NOTE: DSERT to CACTY route: For non-GPS equipped aircraft, DRK and IWA DMEs must be operational.
- NOTE: DSERT to TYLIK route: For non-GPS equipped aircraft, DRK, IWA, and PXR DMEs must be operational.



(CONTINUED ON FOLLOWING PAGE)

NOTE: Chart not to scale.

SW-4, 16 APR 2026 to 14 MAY 2026

SW-4, 16 APR 2026 to 14 MAY 2026

ARRIVAL ROUTE DESCRIPTION

FLAGSTAFF TRANSITION (FLG.DSERT2)

KIDDR TRANSITION (KIDDR.DSERT2)

LJAYY TRANSITION (LJAYY.DSERT2)

WINSLOW TRANSITION (INW.DSERT2)

From DSERT on track 182° to SHOCK, then on track 182° to BUSTD.

LANDING AT KDVT/KSDL/KGEU/KFFZ/KCHD/KGYR/KPHX:

From BUSTD on track 182° to YOLOW, then on track 188° to CACTY then on track 179°. Expect RADAR vectors.

LANDING AT KIWA: From BUSTD on track 133° to BAYTA, then on track 201° to AEJAY, then on track 168° to TYLIK, then on track 168°. Expect RADAR vectors.

SW-4, 16 APR 2026 to 14 MAY 2026

SW-4, 16 APR 2026 to 14 MAY 2026